

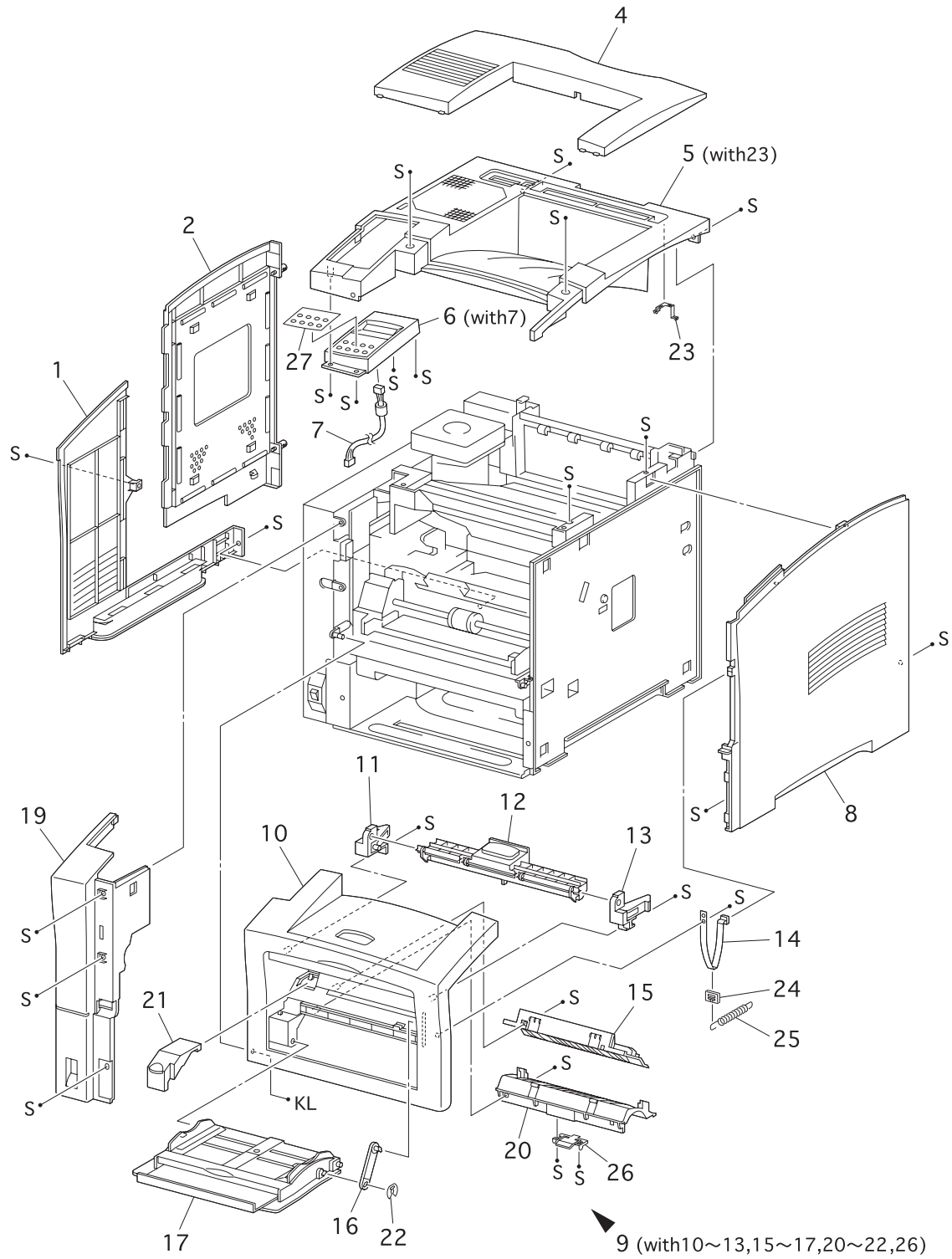
**Section 12 - Parts List****Contents**

PL1.1	Covers I .....	12-2
PL1.2	Covers II .....	12-4
PL2.1	Paper Cassette I .....	12-6
PL2.2	Paper Cassette II .....	12-8
PL3.1	Paper Feeder .....	12-10
PL4.1	Chute MBF .....	12-12
PL5.1	P/H Assy .....	12-14
PL6.1	Chute Trans & Fuser .....	12-16
PL7.1	Exit .....	12-18
PL8.1	Drive & Xerographics .....	12-20
PL9.1	Frame & Size Sensor .....	12-22
PL10.1	Electrical .....	12-24

**Using the Parts List**

1. The numbers shown in each illustration correspond to the parts list number for that illustration.
2. Throughout this manual, parts are identified by the prefix "PL", followed by a number, a decimal point, and another number. For example, PL3.1.12 means the part is item 12 of parts list 3.1.
3. The capital letters "C", "E", and "S" shown in an illustration stand for C-ring, E-ring, and Screw, respectively.
4. A shaded triangle t in an illustration indicates the item is part of an assembly.
5. The notation "with X~Y" following an part name indicates an assembly that is made up of components X through Y. For example, "1 (with 2~4)" means part 1 consists of part 2, part 3, and part 4.
6. The notation "RS" means that the part is a requested spare. Part numbers for these parts will be provided as soon as they are available.
7. An asterisk \* following a part name indicates the page contains a note about this part.
8. The notation "J1<>J2 and P2" is attached to a wire harness. It indicates that connector jack 1 is attached to one end of the wire harness and connector jack 2 is attached to the other end that is plugged into plug 2.
9. A notation "(part of item 1.1)" indicates that the part is included with item 1.2.1 (PL1.2, line item 1).

### PL1.1 Covers I

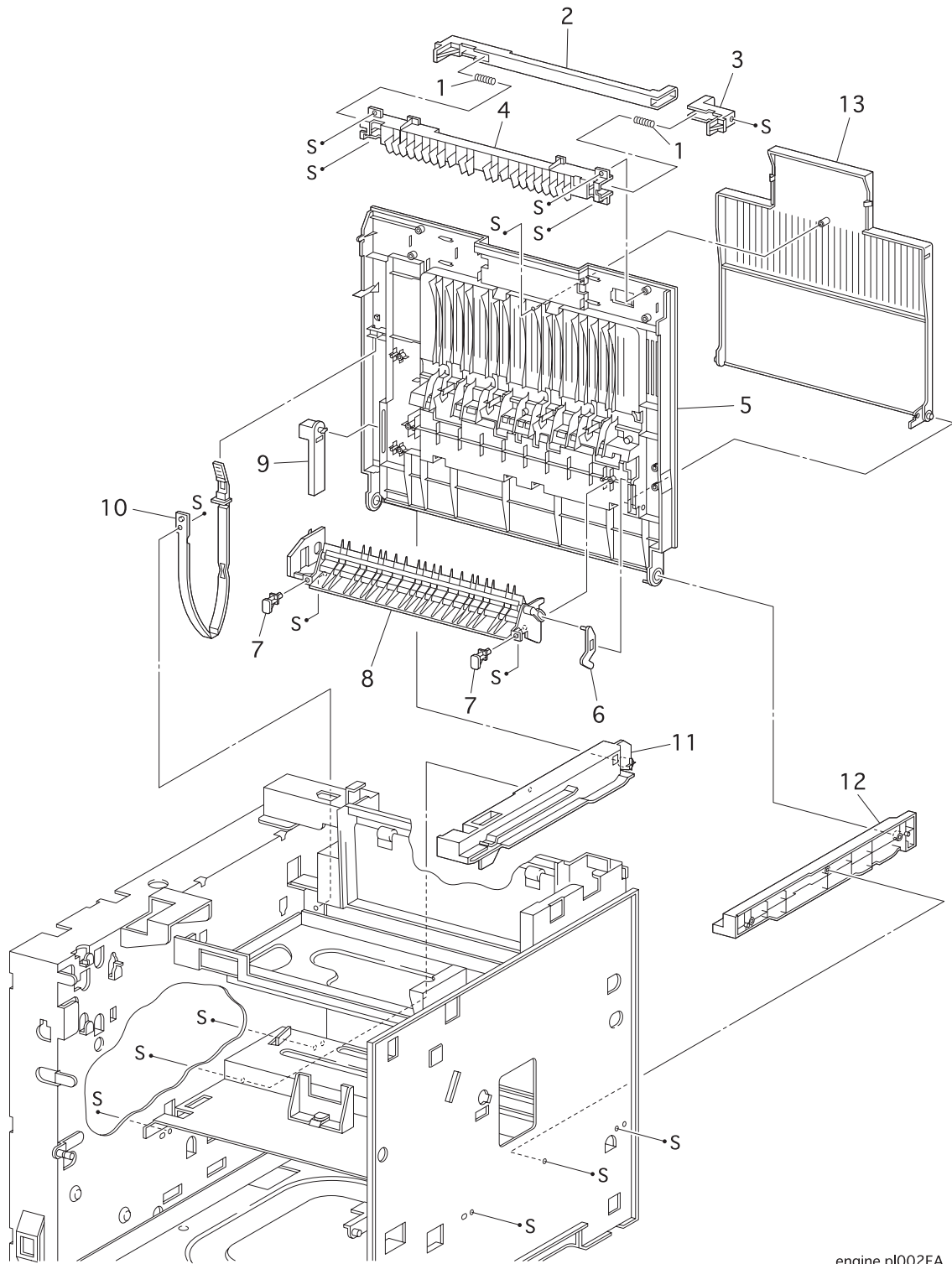


engine pl001FA

**PL1.1 Covers I**

ITEM	PART NUMBER	PART NAME
1	048E64591	COVER LEFT
2	048K76270	COVER ASSY I/F
3	---	
4	048E64642	COVER OPTION
5	048K76455	COVER ASSY TOP (with 23)
6	802K51410	CONTROL ASSY PANEL (with 7)
7	162K43680	HARNESS ASSY PANEL (J362-J363)
8	048E64612	COVER RIGHT
9	048K76243	COVER ASSY FRONT (with 10~13,15~17,20~22,26)
10	---	COVER FRONT
11	---	LATCH ASSY L
12	---	LEVER
13	---	LATCH ASSY R
14	003E48991	STOPPER COVER
15	---	CHUTE ENV
16	003E43880	STOPPER TRAY
17	050K37121	TRAY ASSY MBF
18	---	
19	048E64624	COVER FRONT L/H
20	---	CHUTE MBF
21	---	ENV GEAR COVER
22	354W24254	CLIP
23	---	SPRING EARTH EXIT 2
24	---	JOINT SPRING
25	---	SPRING FRONT
26	004K01870	CLEANING PAD ASSY
27	---	CONTROL PANEL OVERLAY

### PL1.2 Covers II

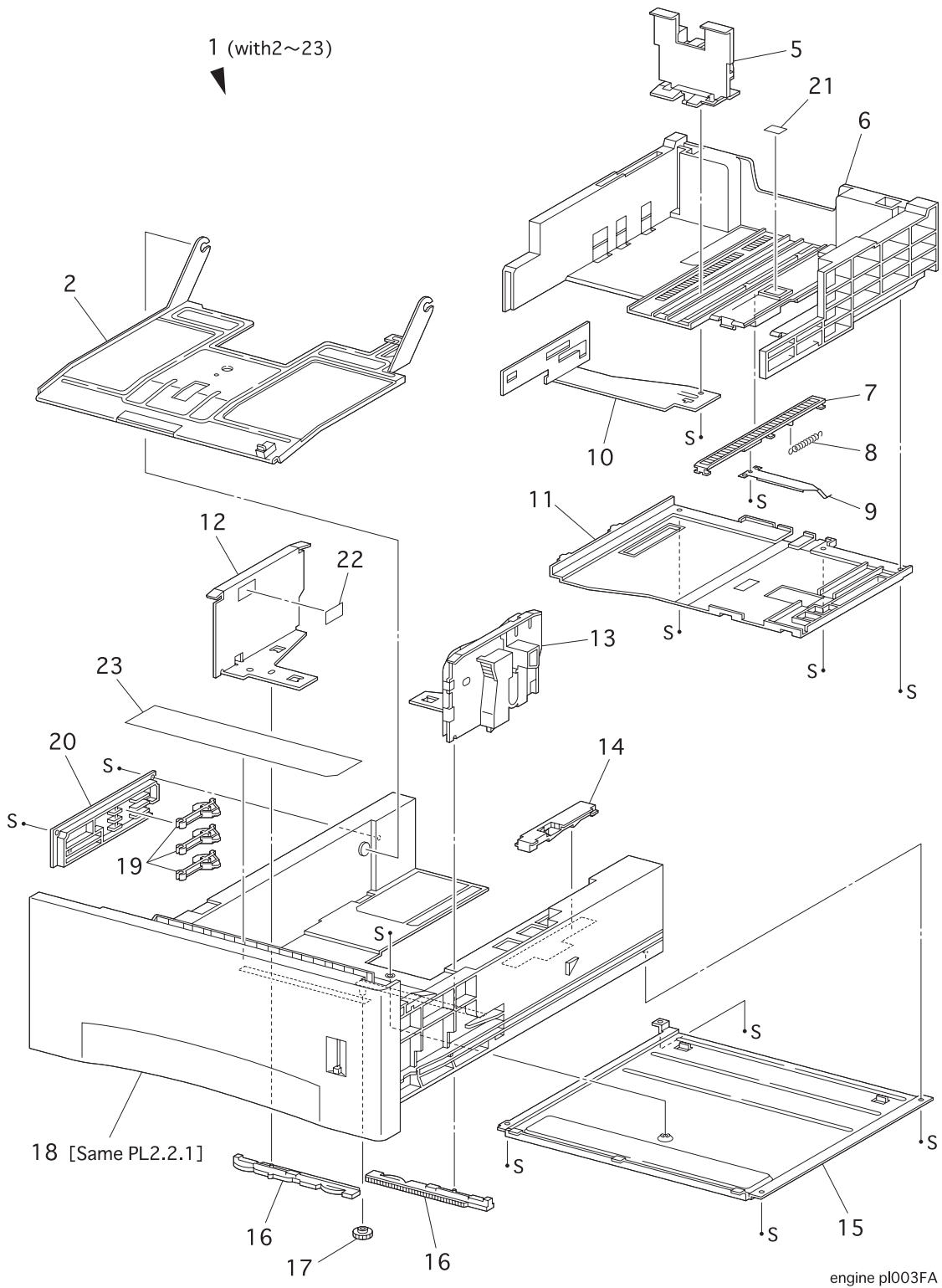


engine pl002FA

**PL1.2 Covers II**

ITEM	PART NUMBER	PART NAME
1	---	SPRING LATCH
2	---	LATCH L
3	---	LATCH R
4	---	COVER LATCH
5	---	COVER REAR
6	---	ARM DIRECTION
7	---	CAP ENVELOPE
8	---	CHUTE ASSY FACE UP
9	---	STOPPER PIVOT R
10	003E46120	STOPPER
11	---	GUIDE RAIL DUP L
12	---	GUIDE RAIL DUP R
13	---	OVER FACE UP
98	600K79530	KIT CAP ENVELOPE (qty. 2 of item 7)
99	802K12743	COVER ASSY REAR (with 1~9)

### PL2.1 Paper Cassette I

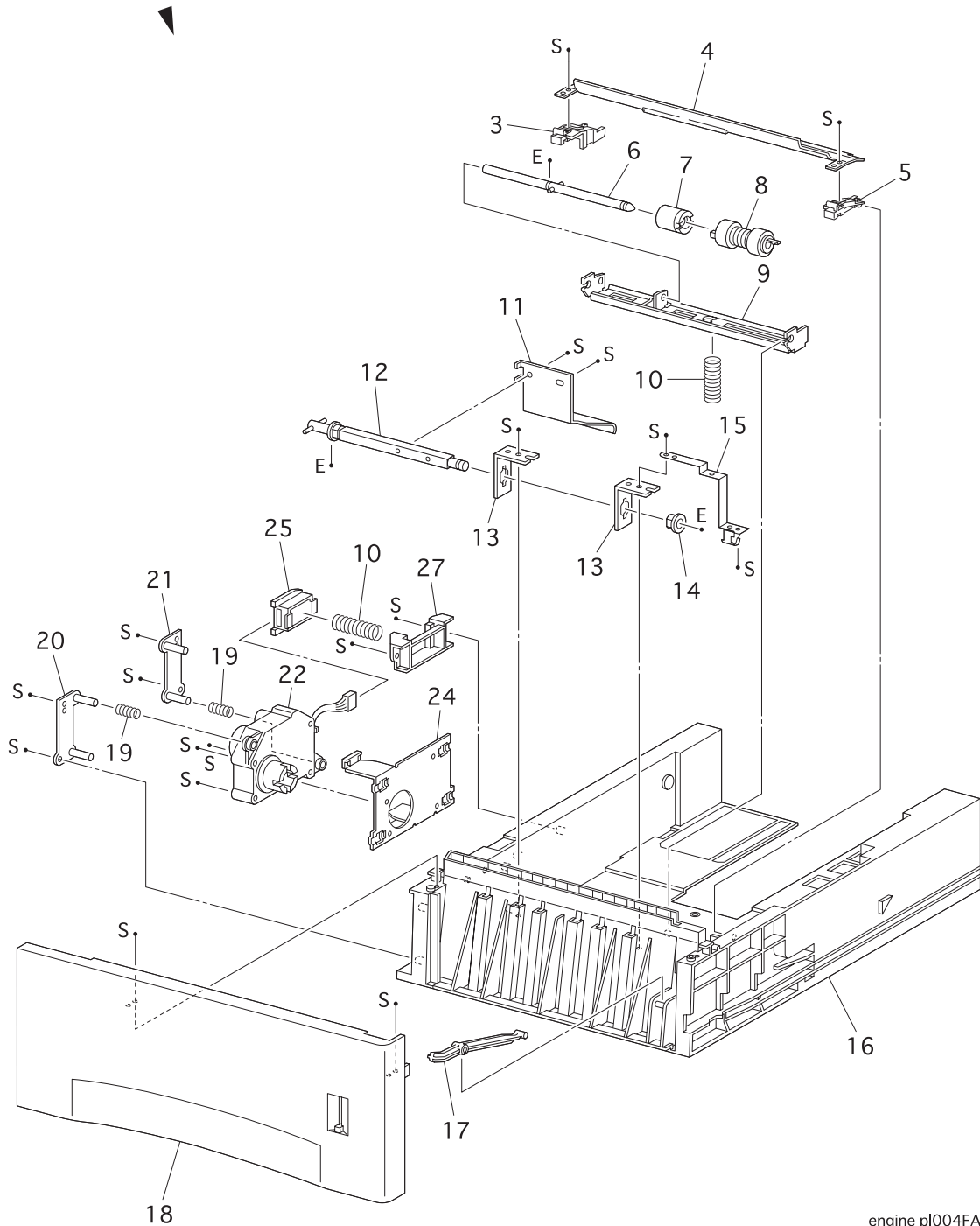


**PL2.1 Paper Cassette I**

ITEM	PART NUMBER	PART NAME
1	---	CASSETTE ASSY (with 2~23)
2	---	PLATE ASSY BOTTOM
3	---	
4	---	
5	604K04810	KIT GUIDE END
6	---	HOUSING EXTENSION
7	---	SLIDE RACK
8	---	SPRING EXTENSION
9	---	LATCH SPRING
10	---	PLATE SIZE
11	---	BASE EXTENSION
12	---	GUIDE SIZE L
13	---	GUIDE ASSY SIDE R
14	---	LINK
15	---	BASE CST
16	---	RACK
17	---	PINION
18	---	CASSETTE SUB ASSY [same PL2.21]
19	---	ACTUATOR CST
20	---	COVER ACTUATOR
21	---	LABEL BUTTON
22	---	LABEL INDICATOR
23	---	LABEL CST INSTRUCTION

### PL2.2 Paper Cassette II

1 (with 2~27) [Same PL2.1.18]



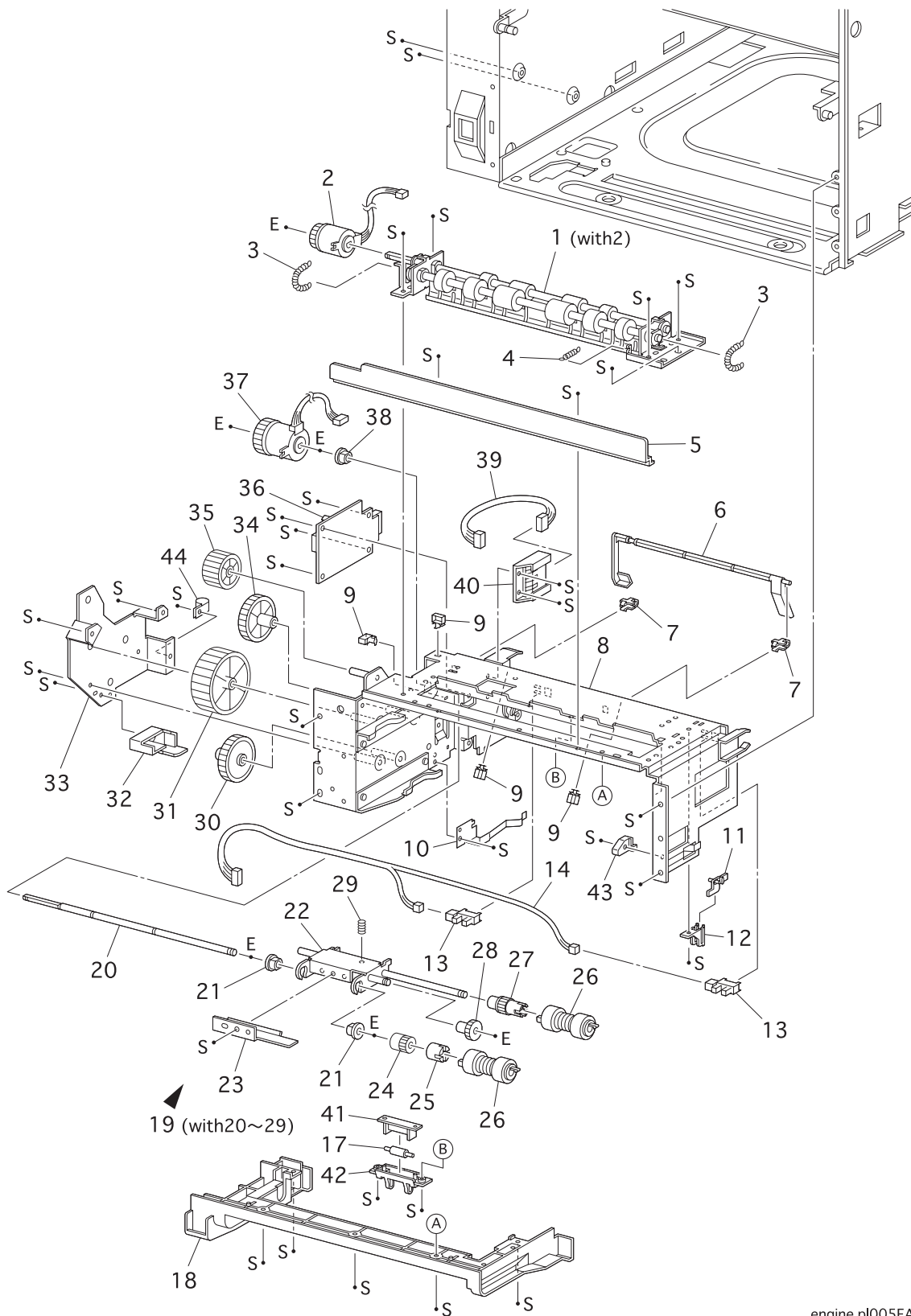
engine pl004FA



**PL2.2 Paper Cassette II**

ITEM	PART NUMBER	PART NAME
1	---	CASSETTE SUB ASSY (with 2~27) [Same PL2.1.18] (REF. ONLY)
2	---	
3	---	CHUTE RETARD BASE L
4	---	CHUTE RETARD
5	---	CHUTE RETARD BASE R
6	---	SHAFT ASSY RETARD
7	005K82890	CLUTCH ASSY FRICTION
8	---	ROLL ASSY
9	---	BRACKET RETARD
10	809E11830	SPRING RETARD
11	---	PLATE TONGUE
12	---	SHAFT ASSY TONGUE
13	---	HOLDER SHAFT LIFT UP
14	---	BEARING
15	---	SPRING EARTH LIFT UP
16	---	HOUSING CASSETTE
17	---	LEVER
18	---	HANDLE ASSY CASSETTE
19	---	SPRING MOTOR
20	---	HOLDER R
21	---	HOLDER L
22	127K24682	MOTOR ASSY
23	---	
24	---	HOLDER ASSY MOTOR
25	114E11680	CONNECTOR
26	---	
27	---	GUIDE SOCKET
99	600K79550	KIT ROLL FEED (qty. 3 of item 8)

### PL3.1 Paper Feeder

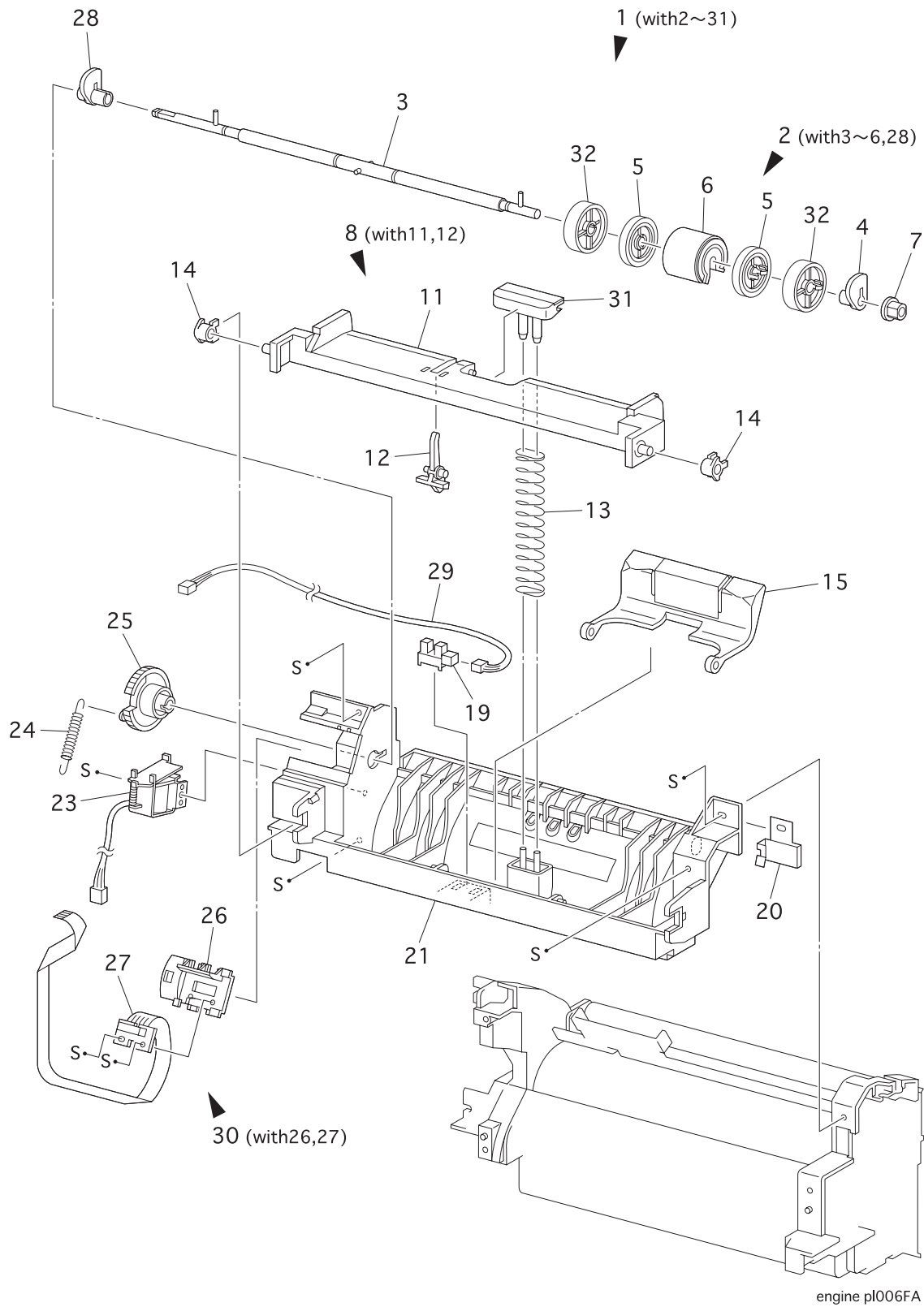


engine pl005FA

**PL3.1 Paper Feeder**

ITEM	PART NUMBER	PART NAME
1	022K66290	ROLL ASSY TURN (with 2)
2	121K20151	CLUTCH ASSY TURN
3	---	SPRING EXTENSION
4	809E11630	SPRING CHUTE
5	---	COVER CST FEED
6	120E16960	ACTUATOR N/P
7	830E18132	SUPPORT ACTUATOR
8	---	FRAME ASSY FEEDER
9	---	CLAMP
10	---	SPRING LATCH L
11	---	ACTUATER LOW PAPER
12	---	SUPPORT ACTUATOR L/P
13	130E81970	SENSOR PHOTO :FACE CONTROL,LOW PAPER
14	162K47211	HARNESS ASSY N/SNSR (J66-J661,J662)
15	---	
16	---	
17	---	ROLL 7
18	---	COVER FEEDER
19	600K79320	FEEDER ASSY (with 20~29)
20	---	SHAFT FEED
21	---	BEARING
22	---	SUPPORT ASSY NUDGER
23	---	CLUTCH NUDGER
24	---	CLUTCH GEAR
25	---	CLUTCH ASSY O/W
26	---	ROLL ASSY
27	---	GEAR 25T
28	---	GEAR 31T
29	---	SPRING NUDGER
30	---	GEAR 4
31	---	GEAR 2
32	---	COVER GEAR
33	---	BRACKET
34	---	GEAR 3
35	---	GEAR 1
36	160K52781	PWBA FEEDER
37	121K19010	CLUTCH ASSY FEED
38	---	BEARING
39	---	HARNESS ASSY N/MOT (J67-J671)
40	---	SOCKET
41	---	SUPPORT ROLL-7
42	---	CHUTE TURN
43	---	STOPPER CST
44	---	CLAMP
96	600K79640	KIT SOCKET & HARNESS (39, 40) (same as )
97	600K79652	KIT ACTUATOR & SUPPORT (11, 12)
98	022K56902	KIT FEEDER ASSY (1~40)
99	600K79550	KIT ROLL FEED (qty. 3 of item 26)

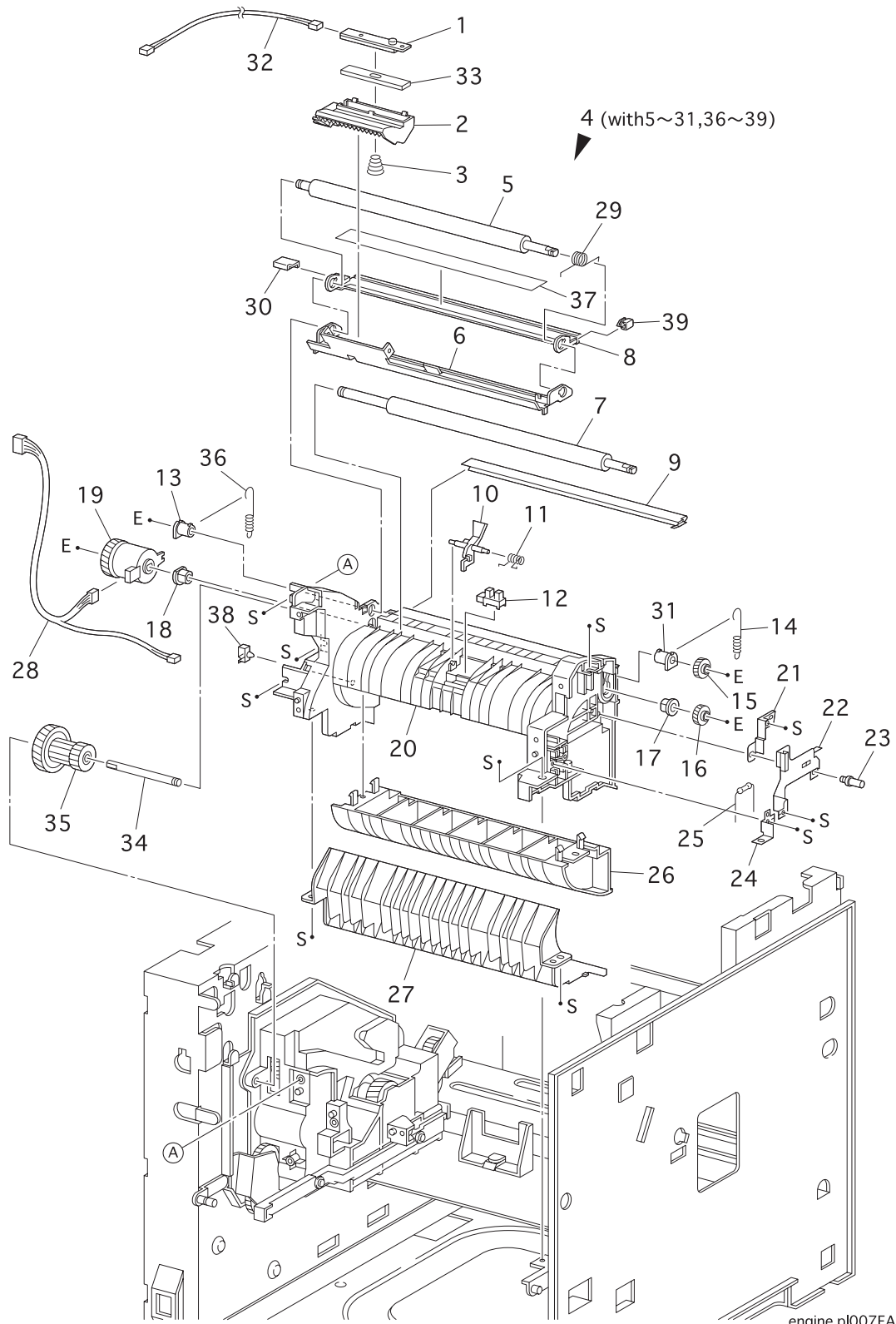
### PL4.1 Chute MBF



**PL4.1 Chute MBF**

ITEM	PART NUMBER	PART NAME
1	054K22391	CHUTE MBF ASSY (with 2~31)
2	---	ROLL ASSY MBF (with 3~6,28)
3	---	SHAFT ASSY MBF
4	---	CAM PICK UP MBF
5	---	CORE
6	022K50815	ROLL ASSY MBF
7	---	BEARING
8	---	TRAY BOTTOM ASSY (with 11,12)
9	---	
10	---	
11	---	TRAY BOTTOM
12	120E17121	ACTUATOR N/P MBF
13	---	SPRING TRAY BOTTOM MBF
14	---	BEARING EXIT
15	019K94573	PAD ASSY RETARD
16	---	
17	---	
18	---	
19	130E81970	SENSOR PHOTO :PAPER SET
20	---	PLATE EARTH MBF
21	---	CHUTE ASSY MBF
22	---	
23	121E85920	SOLENOID PICK UP
24	809E20171	SPRING MBF
25	007E54661	GEAR PICK UP
26	---	PLATE ENV CONECTOR
27	113K82141	CONECTOR ASSY ENV
28	---	CAM PICK UP MBF (LEFT)
29	162K47021	HARNESS ASSY MBF NOPAP (J45-J451)
30	---	PLATE ENV ASSY (with 26,27) .....
31	019K96830	PAD ASSY PICK UP
32	---	GUIDE ROLL

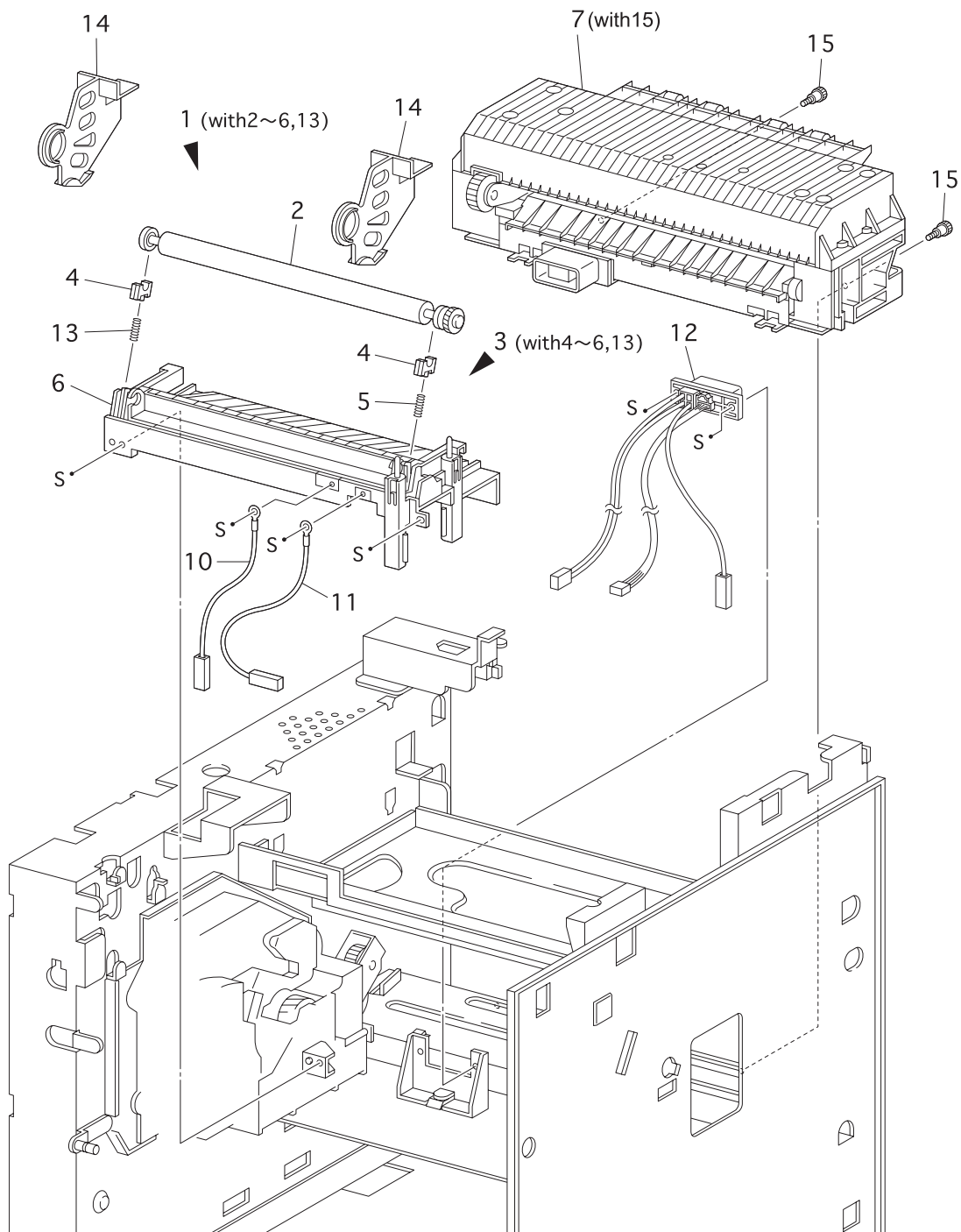
### PL5.1 P/H Assy



**PL5.1 P/H Assy**

ITEM	PART NUMBER	PART NAME
1	---	TONER SENSOR
2	---	HOLDER TONER SENSOR
3	---	SPRING TONER SENSOR
4	054K14985	P/H ASSY (with 2,5~31,36~39)
5	---	ROLL REGI METAL
6	---	CHUTE UPPER ASSY
7	059K11911	ROLL REGI RUBBER
8	---	CHUTE INLET
9	---	SPRING EARTH BOTTOM
10	120E13331	ACTUATOR REGI
11	809E19722	SPRING SENSOR REGI
12	130E81970	SENSOR PHOTO :REGI
13	---	BEARING METAL
14	809E22950	SPRING REGI
15	007E54671	GEAR REGI METAL
16	007E54681	GEAR REGI RUBBER
17	---	BEARING RUBBER R
18	---	BEARING RUBBER L
19	121E85821	CLUTCH REGI
20	---	CHUTE BOTTOM UPPER
21	---	SPRING EARTH RIGHT
22	---	SPRING EARTH CENTER
23	---	SCREW EARTH
24	---	SPRING LEFT
25	---	RESISTOR
26	---	CHUTE BOTTOM LOWER
27	---	CHUTE CST
28	162K47011	HARNESS ASSY REGI (J43-J432,J433)
29	---	SPRING TORSION
30	---	HANDLE LEVER
31	---	BEARING METAL R
32	---	HARNESS ASSY TONER SENSOR (J42-J421)
33	---	CUSHION TNS
34	006E60981	SHAFT 14
35	007E54650	GEAR 14
36	809E19030	SPRING REGI L
37	---	LABEL INLET
38	---	CLAMP
39	---	CAP INLET
99	600K79381	KIT TONER SENSOR (with 1~3, 32, 33)

### PL6.1 Chute Trans & Fuser



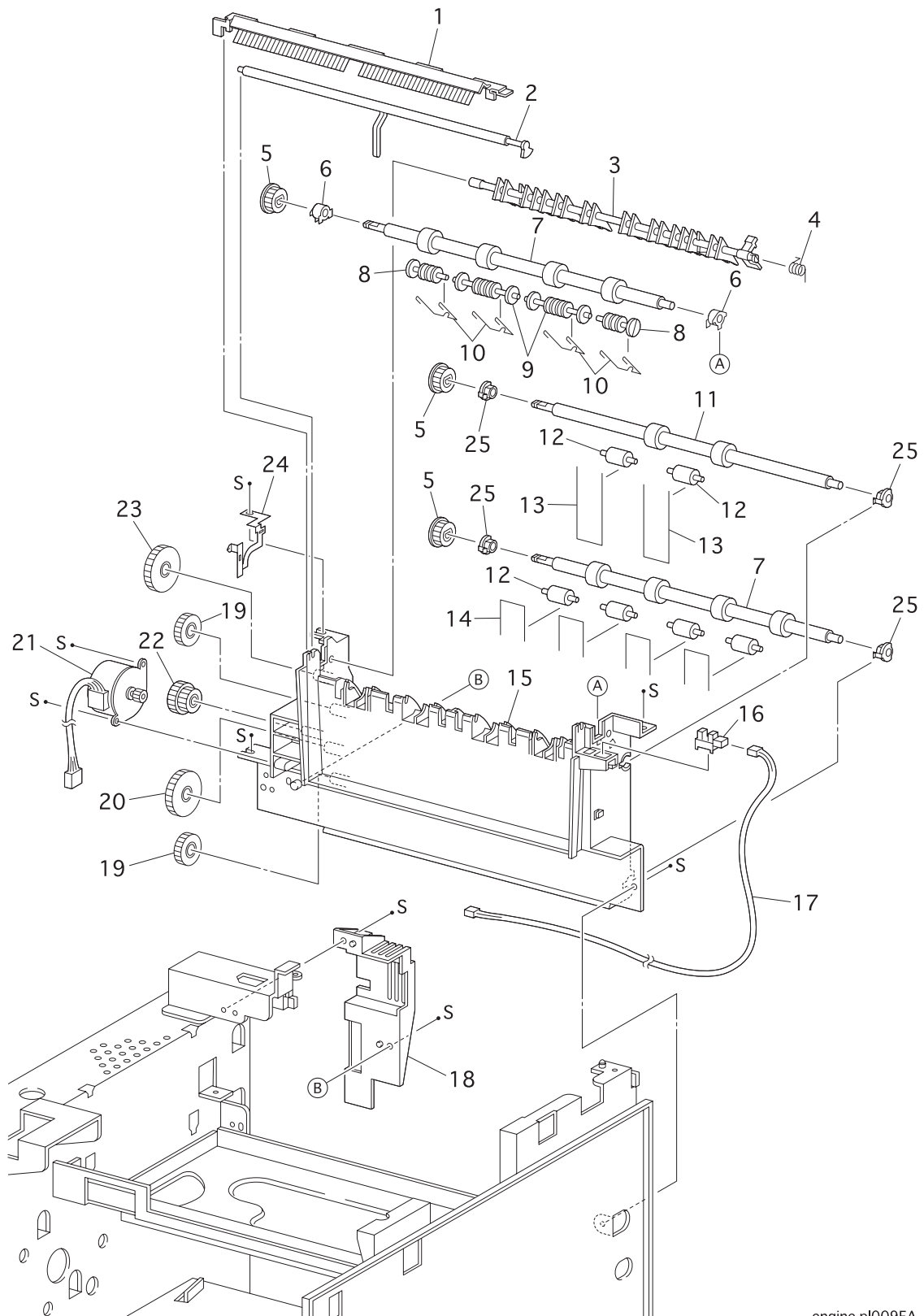
engine pl008FA



**PL6.1 Chute Trans & Fuser**

ITEM	PART NUMBER	PART NAME
1	---	BTR CHUTE ASSY (with 2~6,13)
2	022K55010	BTR ASSY
3	054K15000	CHUTE TRANS ASSY (with 4~6,13)
4	---	BEARING BTR SUP
5	---	SPRING BTR
6	---	CHUTE TRANS (REFERENCE ONLY)
7	126K14941	120V FUSER ASSY (with 15)
--	126K14941	220V FUSER ASSY (with 15)
8	---	
9	---	
10	---	WIRE ASSY DTS
11	---	WIRE ASSY TR
12	962K06310	120V HARNESS ASSY FUSER-M (J271,J11,J27,J262)
--	962K06310	220V HARNESS ASSY FUSER-M (J271,J11,J27,J262)
13	---	SPRING BTR L
14	---	HOLDER BTR
15	---	THUMB SCREW

PL7.1 Exit

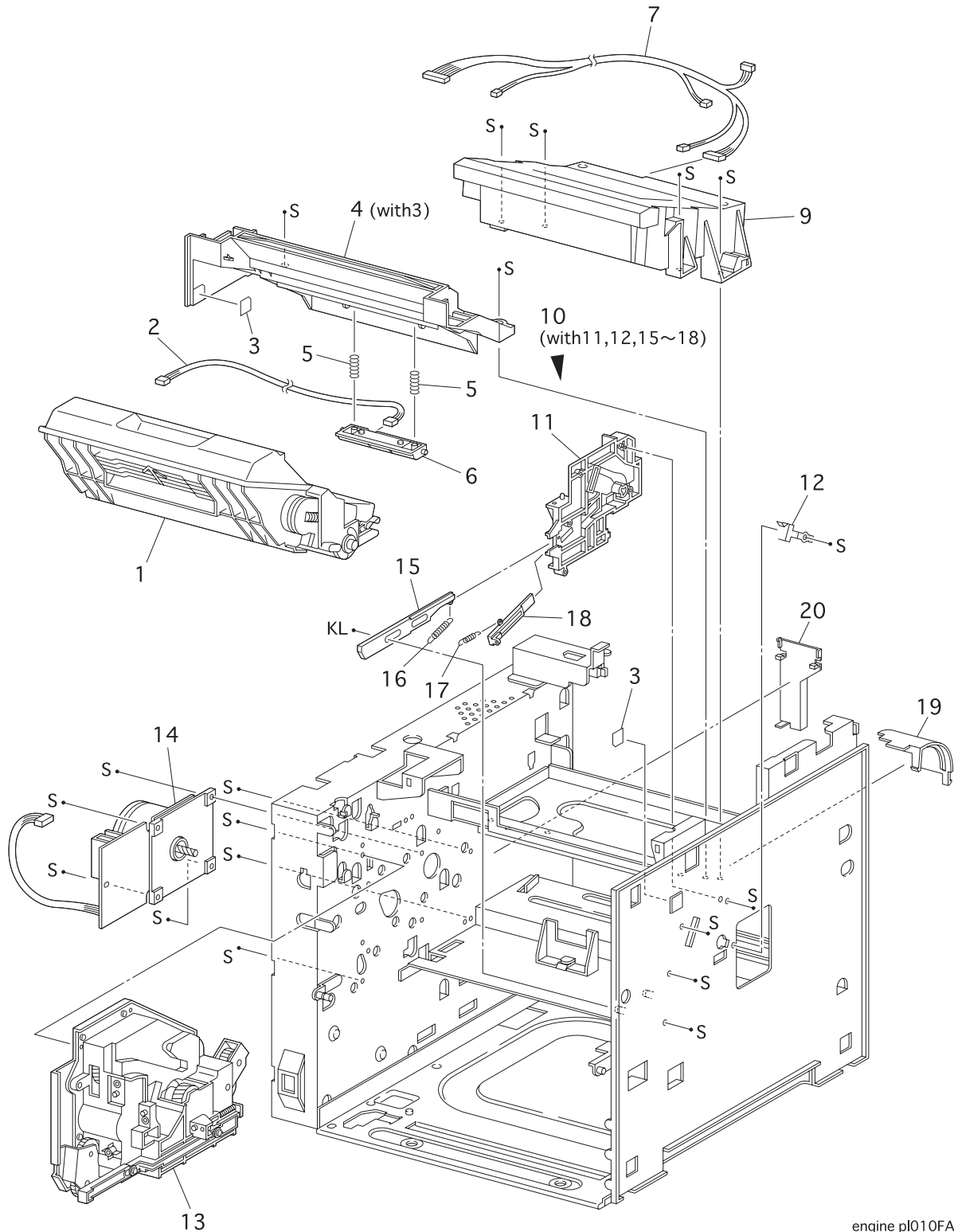


engine pl009FA

**PL7.1 Exit**

ITEM	PART NUMBER	PART NAME
1	105K14904	ELIMINATOR ASSY EXIT
2	120E13350	ACTUATOR FULL STACK
3	---	GATE EXIT
4	---	SPRING EXIT
5	---	GEAR EXIT-17
6	---	BEARING EXIT
7	059K11950	ROLL ASSY MID-1
8	---	ROLL PINCH EXIT OUT
9	---	ROLL PINCH EXIT
10	---	SPRING PINCH EXIT
11	059K11960	ROLL ASSY MID-2
12	---	ROLL PINCH
13	---	SPRING PINCH MID
14	---	SPRING PINCH
15	---	CHUTE EXIT
16	130E81970	SENSOR PHOTO :EXIT
17	162K46981	HARNESS ASSY FS SNR (J31-J311)
18	---	COVER INTERLOCK
19	---	GEAR EXIT-23
20	---	GEAR EXIT-33
21	127K35830	MOTOR ASSY EXIT
22	---	GEAR EXIT-17/47
23	---	GEAR EXIT-32
24	---	SPRING EARTH EXIT
25	---	BEARING MID
98	600K79540	KIT BEARING (qty. 6 of item 6)
99	054K22170	CHUTE EXIT ASSY (with 1~17, 19~24)

### PL8.1 Drive & Xerographics

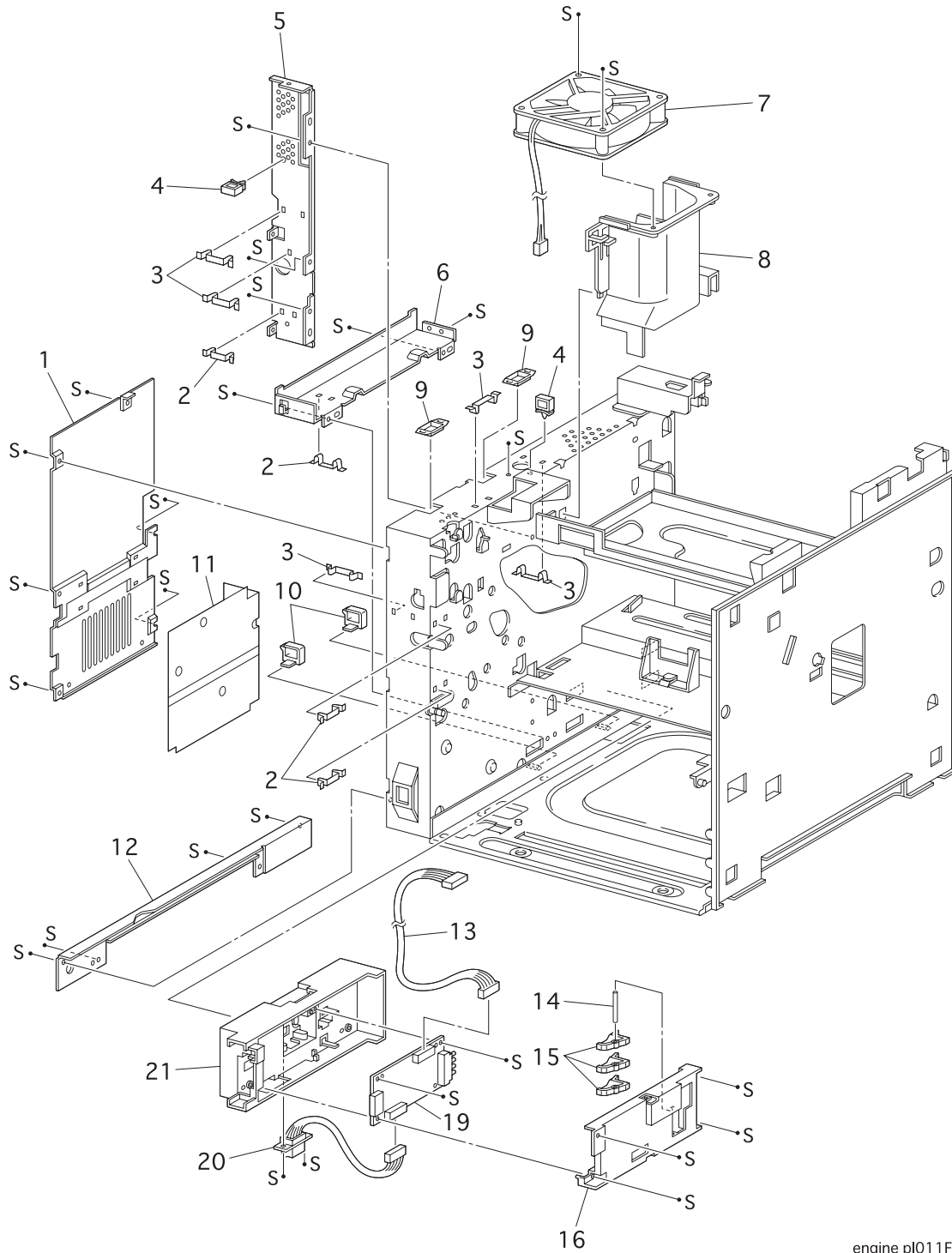


engine pl010FA

**PL8.1 Drive & Xerographics**

ITEM	PART NUMBER	PART NAME
1	---	CRU
2	---	HARNESS ASSY CRU SNS (J25-J251)
3	---	LABEL ARROW
4	032K94111	CRU TOP GUIDE ASSY (with 3)
5	---	SPRING
6	---	SENSOR ASSY CRU
7	962K14480	HARNESS ASSY ROS (J21,J22-J211,J212,J213,J223)
8	---	
9	062K11210	ROS ASSY
10	---	CRU SIDE GUIDE ASSY-R (with 11,12,15~18)
11	---	CRU SIDE GUIDE
12	---	SPRING CLIP
13	007K87580	GEAR ASSY DRIVE
14	127K35701	MOTOR ASSY MAIN
15	---	ARM GUIDE A
16	---	SPRING GUIDE A
17	---	SPRING GUIDE B
18	---	ARM GUIDE B
19	---	DUCT ROS
20	---	DUCT FUSER
99	032K96660	KIT SENSOR CRU

### PL9.1 Frame & Size Sensor

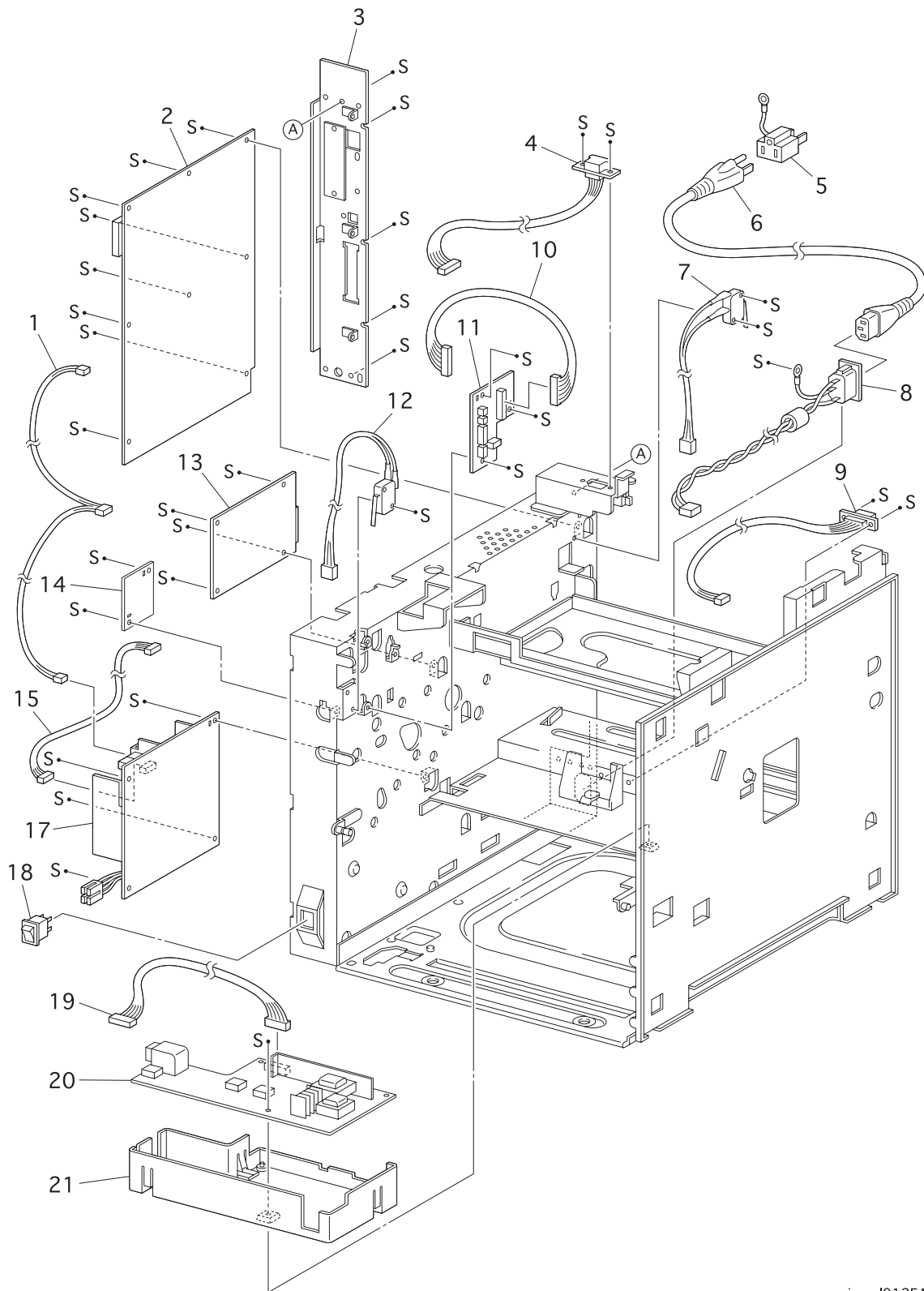


engine pl011FA

**PL9.1 Frame & Size Sensor**

ITEM	PART NUMBER	PART NAME
1	---	PLATE ASSY LEFT
2	---	CLAMP PRESS
3	---	CLAMP PRESS L
4	---	CLAMP I/F
5	---	ELEC BOX LOWER B
6	---	ELEC BOX LOWER A
7	127E13840	FAN ASSY
8	---	DUCT FAN
9	---	EDGE SADDLE H
10	---	CLAMP AC
11	---	PLATE INSULATOR
12	---	PLATE HANDLE
13	162K47001	HARNESS ASSY FEEDER (J33-J331)
14	---	SHAFT CAM
15	---	CAM SW
16	---	COVER SIZE SENSOR
17	---	
18	---	
19	160K52771	PWBA SIZE 1
20	162K48420	HARNESS ASSY SIZE M (J51-P511)
21	---	HOUSING SIZE SENSOR
22	---	
99	802K09970	KIT SIZE SENSOR 1

PL10.1 Electrical



engine pl012FA



**PL10.1 Electrical**

ITEM	PART NUMBER	PART NAME
1	162K47201	HARNESS ASSY ESS (J287-J282,J288)
2	160K91624	PWB ESS
3	101K39511	PANEL BACK ASSY
4	162K49271	HARNESS ASSY OCT-M (J35-P202)
5	---	ADAPTER
6	---	POWER CORD
7	110K08571	SWITCH ASSY I/L REAR
8	---	WIRE ASSY AC (J285)
9	162K46991	HARNESS ASSY DUP-M (J34-P341)
10	162K46941	HARNESS ASSY CONN (J23-J231)
11	160K52761	PWBA CONN
12	110K08561	SWITCH ASSY I/L FRONT
13	160K85653	PWBA HKBMCU
14	105K15402	PWBA HKB 5VDC
15	162K46972	HARNESS ASSY LVPS (J28-J281)
16	---	
17	105K19860	PWBA HKB LVPS-120
	105K19860	PWBA HKB LVPS-230
18	110E94430	MAIN SWITCH
19	162K46962	HARNESS ASSY HVPS (J26-J261)
20	105K19750	PWBA HVPS
21	---	HOUSING HVPS
99	830E60020	BLANKING PLATE CONTROLLER (not shown)

## Parts List

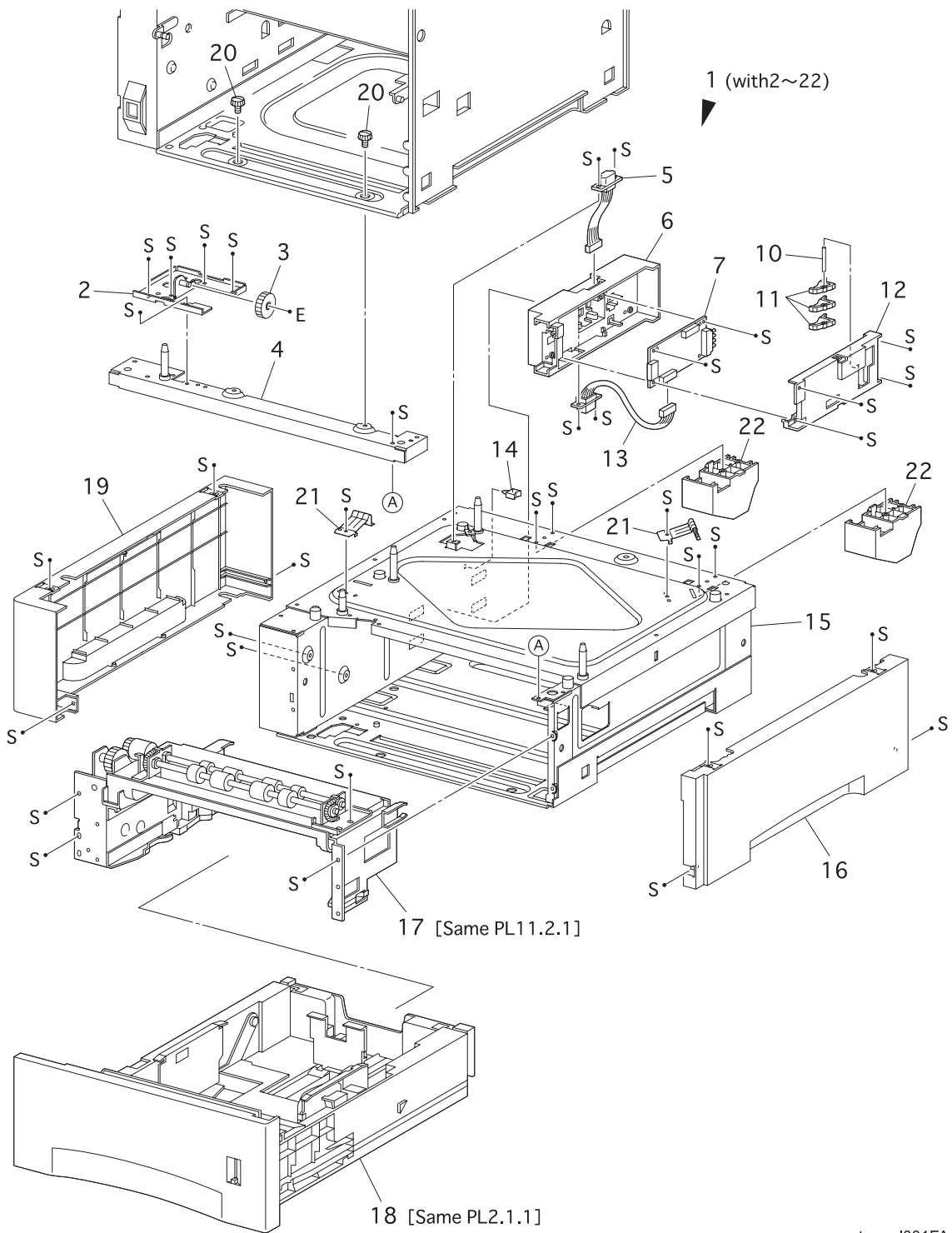
**Section 12 - Parts List****Contents**

PL11.1 Option Feeder I . . . . .	12-2
PL11.2 Option Feeder II . . . . .	12-4

**Using the Parts List**

1. The numbers shown in each illustration correspond to the parts list number for that illustration.
2. Throughout this manual, parts are identified by the prefix "PL", followed by a number, a decimal point, and another number. For example, PL3.1.12 means the part is item 12 of parts list 3.1.
3. The capital letters "C", "E", and "S" shown in an illustration stand for C-ring, E-ring, and Screw, respectively.
4. A shaded triangle  $t$  in an illustration indicates the item is part of an assembly.
5. The notation "with X~Y" following an part name indicates an assembly that is made up of components X through Y. For example, "1 (with 2~4)" means part 1 consists of part 2, part 3, and part 4.
6. The notation "RS" means that the part is a requested spare. Part numbers for these parts will be provided as soon as they are available.
7. An asterisk  $*$  following a part name indicates the page contains a note about this part.
8. The notation "J1<>J2 and P2" is attached to a wire harness. It indicates that connector jack 1 is attached to one end of the wire harness and connector jack 2 is attached to the other end that is plugged into plug 2.
9. A notation "(part of item 1.1)" indicates that the part is included with item 1.2.1 (PL1.2, line item 1).

### PL11.1 Option Feeder Ia

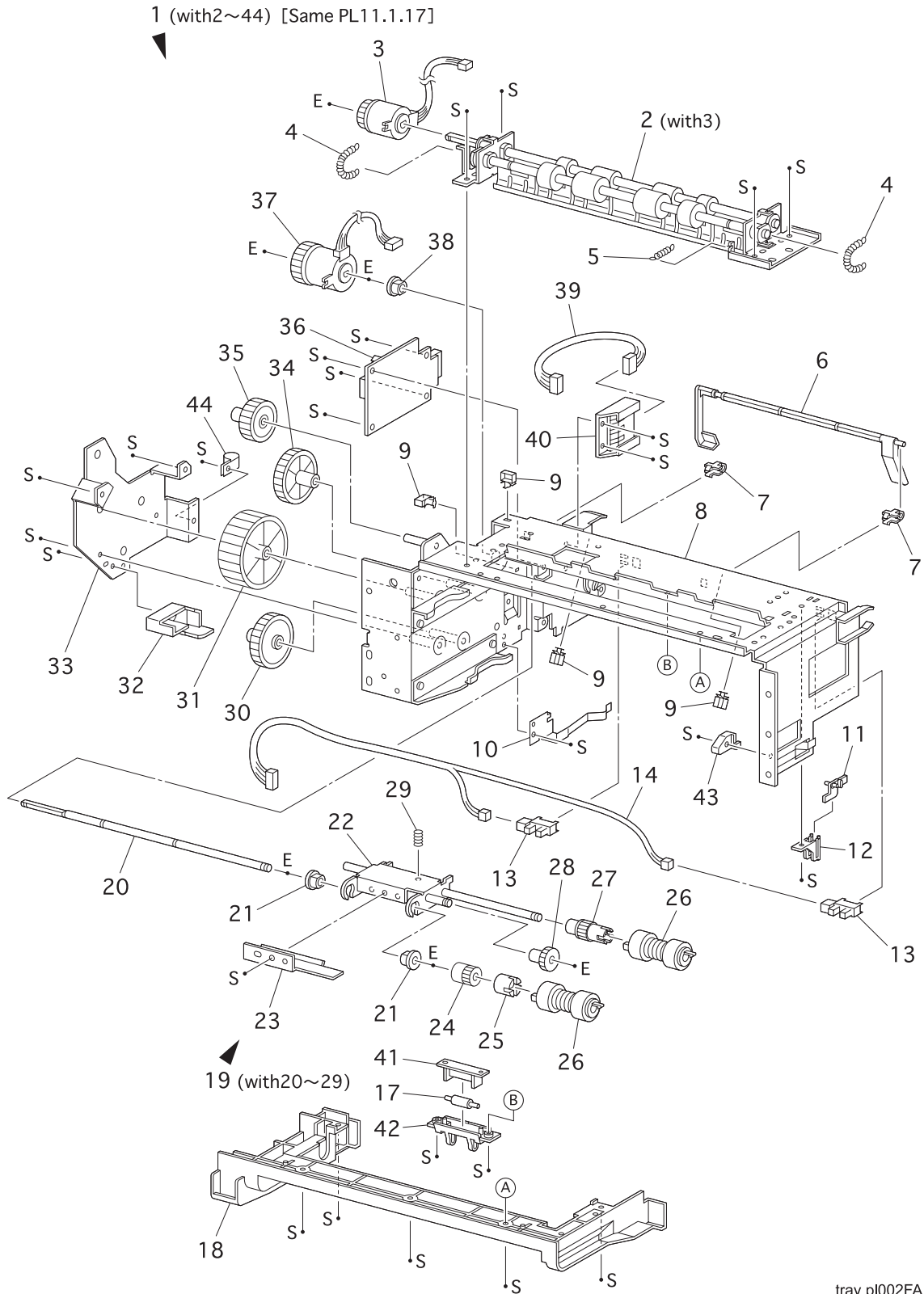


tray pl001FA

**PL11.1 Option Feeder I**

ITEM	PART NUMBER	PART NAME
1	---	OPTION FEEDER ASSY (with 2~22)
2	---	BRACKET ASSY OPT GEAR
3	007E54920	GEAR OPT I
4	---	PLATE TOP F
5	162K48431	HARNESS ASSY SIZE OPTION (J52-J521)
6	---	HOUSING SIZE SENSOR
7	160K53061	PWBA SIZE OPTION
8	---	
9	---	
10	---	SHAFT CAM
11	---	CAM SW
12	---	COVER SIZE SENSOR
13	56735601	HARNESS ASSY SIZE M (J53-J531)
14	---	CLAMP
15	---	FRAME ASSY MAIN
16	802E04931	HOUSING SIDE R
17	022K56912	FEEDER ASSY [Same PL11.2.1]
18	---	CASSETTE ASSY [Same PL2.1.1]
19	802E04920	HOUSING SIDE L
20	600K79670	KIT SCREW (qty. 3)
21	---	SPRING EARTH OPT FDR
22	---	BLOCK OPT CST
99	802K09980	HOUSING ASSY SIZE SENSOR 2 (with items 5~13)

### PL11.2 Option Feeder II



tray p1002FA

## PL11.2 Option Feeder II

ITEM	PART NUMBER	PART NAME
1	022K56912	FEEDER ASSY (with 2~44) [Same PL11.1.17]
2	022K66300	ROLL ASSY TURN (with 3)
3	121K20151	CLUTCH ASSY TURN
4	---	SPRING EXTENSION
5	809E11630	SPRING CHUTE
6	120E16960	ACTUATER N/P
7	830E18132	SUPPORT ACTUATER
8	---	FRAME ASSY FEEDER
9	---	CLAMP
10	---	SPRING LATCH L
11	---	ACTUATER LOW PAPER
12	---	SUPPORT ACTUATER L/P
13	130E81970	SENSOR PHOTO :FACE CONTROL,LOW PAPER
14	162K47030	HARNESS ASSY N/SNSR (J66-J661,J662)
15	---	
16	---	
17	---	ROLL 7
18	---	COVER FEEDER
19	---	FEEDER ASSY (with 20~29)
20	---	SHAFT FEED
21	---	BEARING
22	---	SUPPORT ASSY NUDGER
23	---	CHUTE NUDGER
24	---	CLUTCH GEAR
25	---	CLUTCH ASSY O/W
26	---	ROLL ASSY
27	---	GEAR 25T
28	---	GEAR 31T
29	---	SPRING NUDGER
30	---	GEAR 4
31	---	GEAR 2
32	---	COVER GEAR
33	---	BRACKET
34	---	GEAR 3
35	---	GEAR OPT
36	160K52781	PWBA FEEDER
37	121K19010	CLUTCH ASSY FEED
38	---	BEARING
39	---	HARNESS ASSY N/MOT (J67-J671)
40	---	SOCKET
41	---	SUPPORT ROLL-7
42	---	CHUTE TURN
43	---	STOPPER CST
44	---	CLAMP
96	600K79640	KIT SOCKET & HARNESS (39, 40)
97	600K79652	KIT ACTUATOR & SUPPORT (11, 12)
98	022K56902	KIT FEEDER ASSY (1~40)
99	600K79550	KIT ROLL FEED (qty. 3 of item 26)

## Parts List



## Section 12 - Parts List

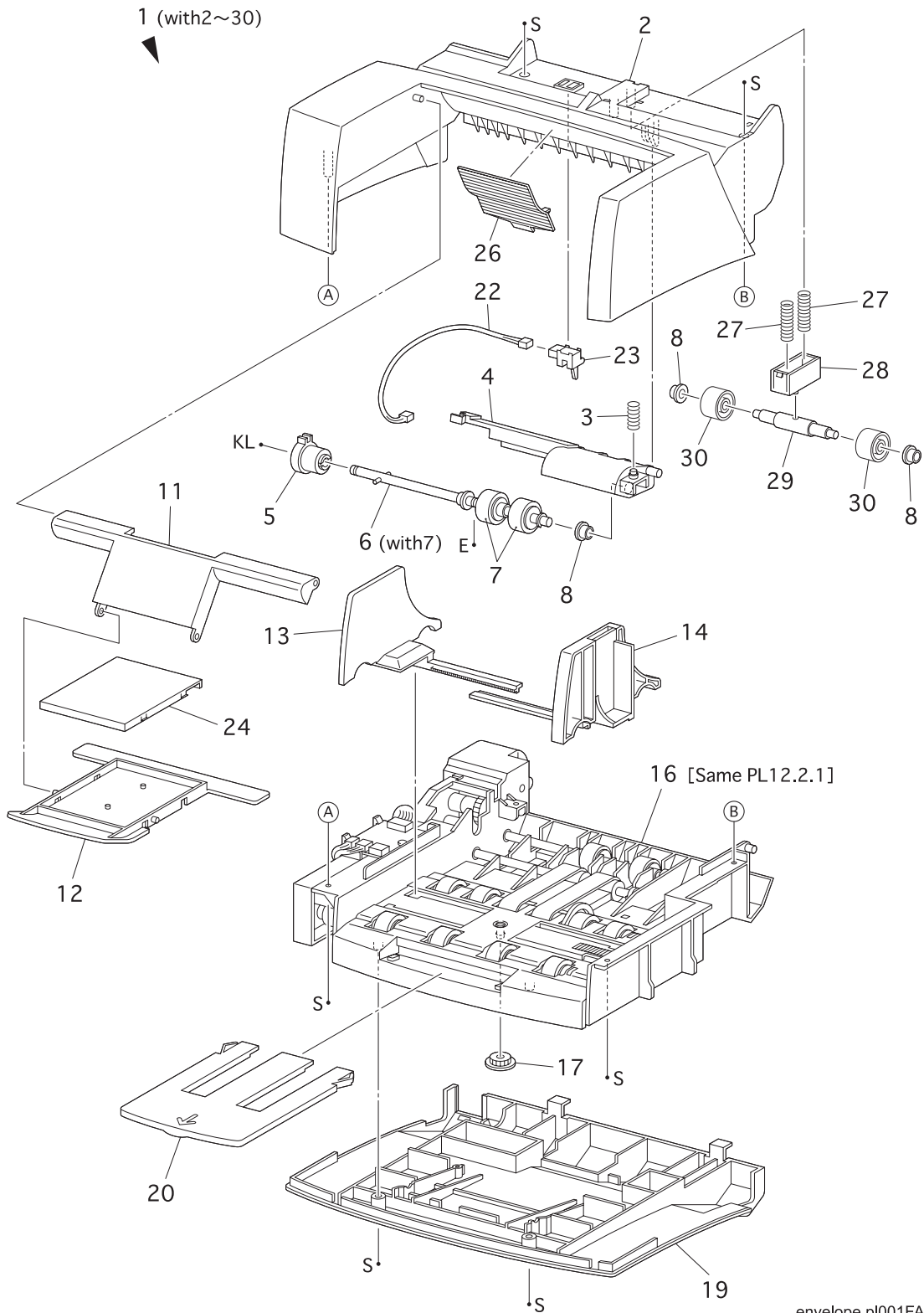
## Contents

PL12.1 Envelope Feeder I .....	12-2
PL12.2 Envelope Feeder II .....	12-4

### Using the Parts List

1. The numbers shown in each illustration correspond to the parts list number for that illustration.
2. Throughout this manual, parts are identified by the prefix "PL", followed by a number, a decimal point, and another number. For example, PL3.1.12 means the part is item 12 of parts list 3.1.
3. The capital letters "C", "E", and "S" shown in an illustration stand for C-ring, E-ring, and Screw, respectively.
4. A shaded triangle  $t$  in an illustration indicates the item is part of an assembly.
5. The notation "with X~Y" following an part name indicates an assembly that is made up of components X through Y. For example, "1 (with 2~4)" means part 1 consists of part 2, part 3, and part 4.
6. The notation "RS" means that the part is a requested spare. Part numbers for these parts will be provided as soon as they are available.
7. An asterisk  $*$  following a part name indicates the page contains a note about this part.
8. The notation "J1<>J2 and P2" is attached to a wire harness. It indicates that connector jack 1 is attached to one end of the wire harness and connector jack 2 is attached to the other end that is plugged into plug 2.
9. A notation "(part of item 1.1)" indicates that the part is included with item 1.2.1 (PL1.2, line item 1).

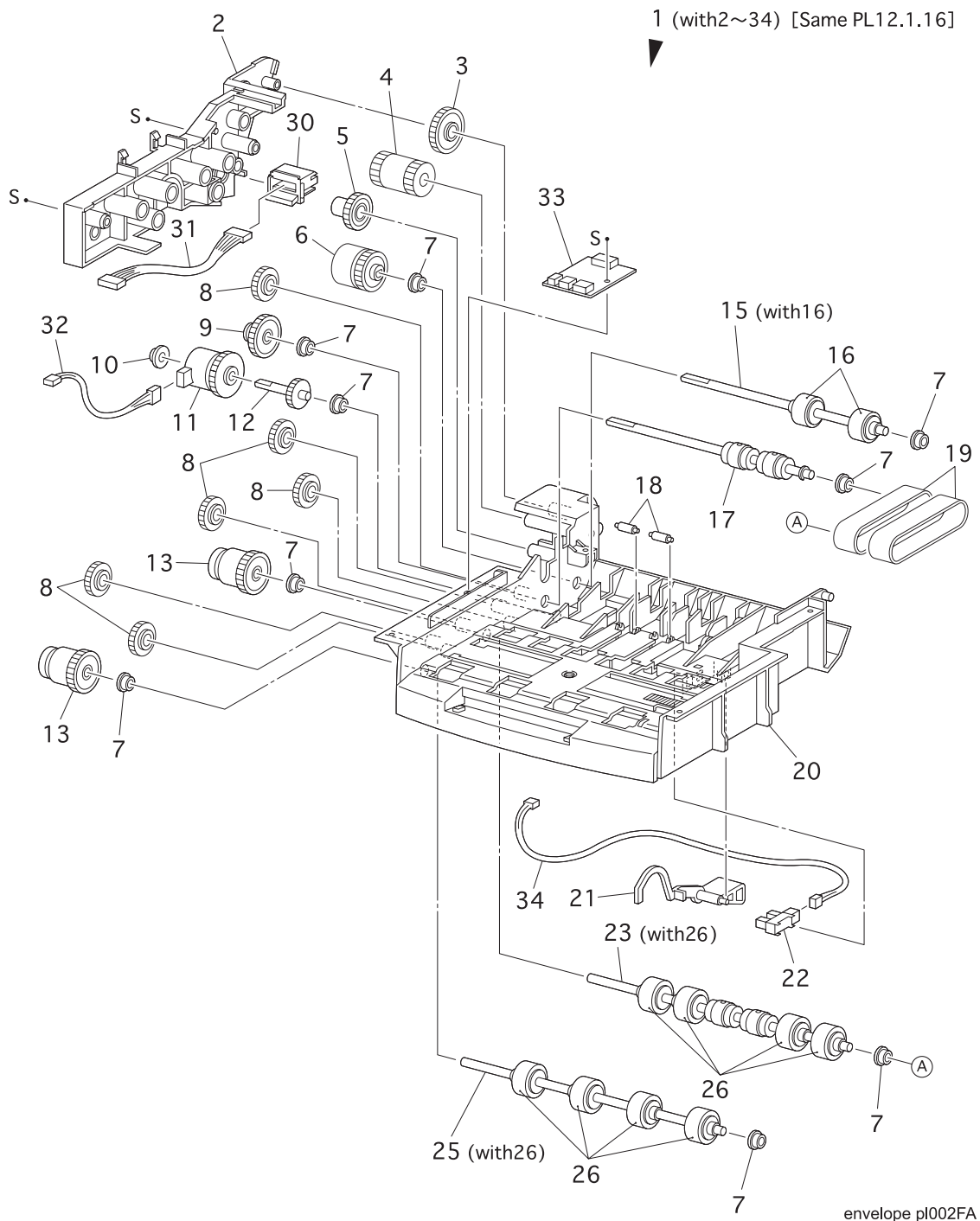
### PL12.1 Envelope Feeder I



**PL12.1 Envelope Feeder I**

ITEM	PART NUMBER	PART NAME
1	---	ENVELOPE FEEDER ASSY (with 2~30)
2	054E14453	CHUTE TOP
3	---	SPRING RETARD
4	---	HOLDER RETARD
5	---	CLUTCH ASSY TORQUE 29
6	---	ROLL ASSY RETARD (with 7)
7	---	ROLL RETARD
8	---	BEARING FEEDER
9	--	
10	--	
11	031E93291	ARM WEIGHT
12	---	HOLDER WEIGHT
13	---	GUIDE SIDE ENV L
14	---	GUIDE SIDE ENV R
15	---	
16	---	ENVELOPE FEEDER SUB ASSY [Same PL12.2.1]
17	---	GEAR PINION
18	---	
19	---	COVER BOTTOM
20	---	TRAY EXTENSION
21	---	
22	---	HARNESS ASSY SENSOR (J412-J417)
23	130K60390	SENSOR ASSY EXIT ENV
24	---	COVER WEIGHT
25	--	
26	---	PLATE CHUTE
27	---	SPRING PINCH
28	---	CAP PINCH
29	---	SHAFT PINCH
30	059E93940	ROLL PINCH
99	600K79310	KIT ROLL ASSY RETARD (with items 3~8)

## PL12.2 Envelope Feeder II



**PL12.2 Envelope Feeder II**

ITEM	PART NUMBER	PART NAME
1	---	ENVELOPE FEEDER SUB ASSY (with 2~34) [Same PL12.1.16]
2	---	COVER GEAR
3	007E27420	GEAR 29
4	---	GEAR DRIVE 21
5	007E36080	GEAR 23
6	121K87180	CLUTCH ASSY TORQUE 25
7	---	BEARING FEEDER
8	007E28780	GEAR IDLER 21
9	121K87201	CLUTCH ASSY ONE WAY 26
10	---	BEARING CLUTCH ELEC
11	121K87190	CLUTCH ELEC 29
12	006E47120	SHAFT CLUTCH ELEC 17
13	121K87210	CLUTCH ASSY ONE WAY TRUQUE 26A
14	---	
15	---	ROLL ASSY TRANS (with 16)
16	---	ROLL TRANS
17	---	ROLL ASSY BOTTOM
18	059E91910	ROLL PINCH ENV
19	---	BELT FEED
20	---	CHASSIS MAIN
21	---	ACTUATOR N/P ENVELOPE
22	130E81970	SENSOR PHOTO :NO PAPER
23	059K13390	ROLL ASSY FEED 1 (with 26)
24	---	
25	059K13401	ROLL ASSY FEED 2 (with 26)
26	---	ROLL FEEDER
27	---	
28	---	
29	---	
30	---	CONNECTOR ENV
31	---	HARNESS ASSY MAIN (J411-J418)
32	---	HARNESS ASSY CLUTCH (J413-J416)
33	---	PWBA ENV
34	---	HARNESS ASSY N/P (J414-J415)

## Parts List

**Section 12 - Parts List****Contents**

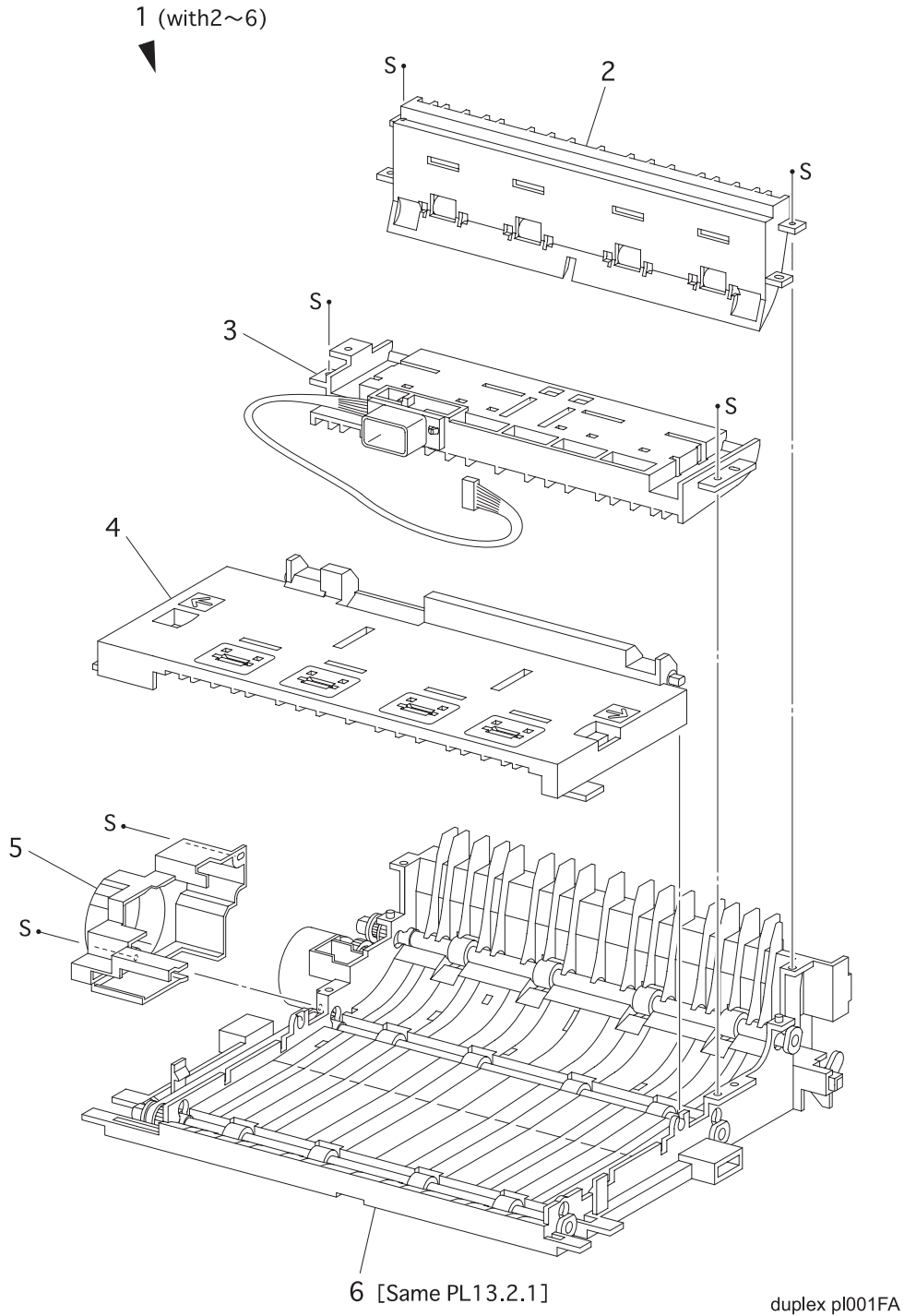
PL13.1 Duplex I .....	12-2
PL13.2 Duplex II .....	12-4

**Using the Parts List**

1. The numbers shown in each illustration correspond to the parts list number for that illustration.
2. Throughout this manual, parts are identified by the prefix "PL", followed by a number, a decimal point, and another number. For example, PL3.1.12 means the part is item 12 of parts list 3.1.
3. The capital letters "C", "E", and "S" shown in an illustration stand for C-ring, E-ring, and Screw, respectively.
4. A shaded triangle  $t$  in an illustration indicates the item is part of an assembly.
5. The notation "with X~Y" following a part name indicates an assembly that is made up of components X through Y. For example, "1 (with 2~4)" means part 1 consists of part 2, part 3, and part 4.
6. The notation "RS" means that the part is a requested spare. Part numbers for these parts will be provided as soon as they are available.
7. An asterisk \* following a part name indicates the page contains a note about this part.
8. The notation "J1<>J2 and P2" is attached to a wire harness. It indicates that connector jack 1 is attached to one end of the wire harness and connector jack 2 is attached to the other end that is plugged into plug 2.
9. A notation "(part of item 1.1)" indicates that the part is included with item 1.2.1 (PL1.2, line item 1).

Parts List

PL13.1 Duplex I

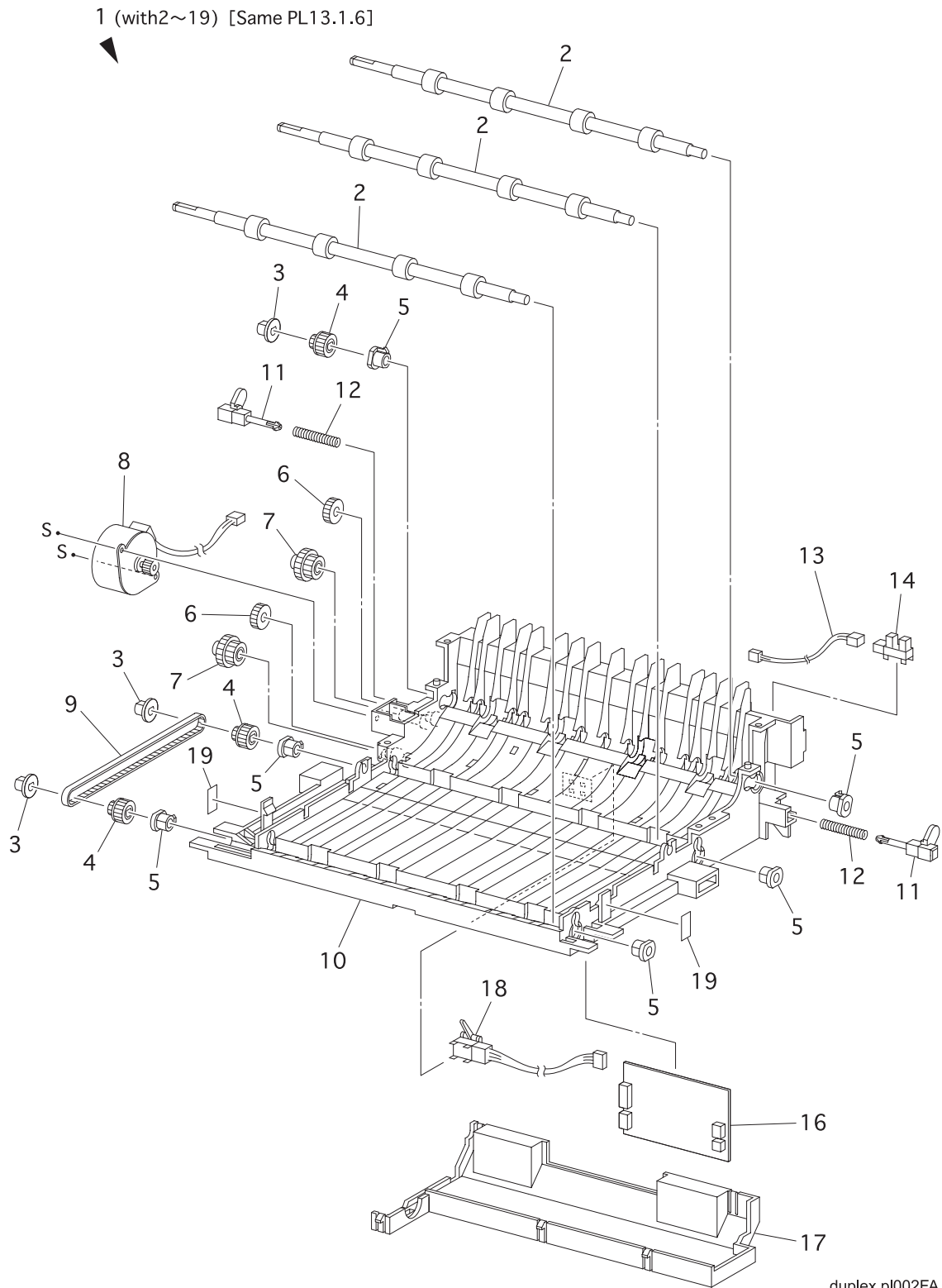




**PL13.1 Duplex I**

ITEM	PART NUMBER	PART NAME
1	---	DUPLEX ASSY (with 2~6)
2	---	CHUTE ASSY TURN DUP
3	---	CHUTE ASSY CONNECTOR DUP
4	054K15061	CHUTE ASSY UPPER DUP
5	---	COVER DRIVE DUP
6	---	CHUTE ASSY LOWER DUP [Same PL13.2.1]

### PL13.2 Duplex II



**PL13.2 Duplex II**

ITEM	PART NUMBER	PART NAME
1	---	CHUTE ASSY LOWER DUP (with 2~19) [Same PL13.1.6]
2	059K12151	ROLL ASSY DUP
3	003E47580	STOPPER BELT DUP
4	---	GEAR DUP 17/PULLEY
5	---	BEARING DUP
6	---	GEAR DUP 18
7	---	GEAR DUP 17/39
8	127K36520	MOTOR ASSY DUP
9	423W15455	BELT SYNCHRONOUS
10	---	CHUTE LOWER DUP
11	---	LATCH DUP
12	---	SPRING LATCH DUP
13	---	HARNESS ASSY DUP SNR (J36-J361)
14	130E81970	SENSOR PHOTO IN-H (L)
15	---	
16	160K53051	PWBA DUP
17	---	COVER DUP
18	130K83310	SENSOR ASSY DUP
19	---	LABLE HANDLE DUP

## Parts List

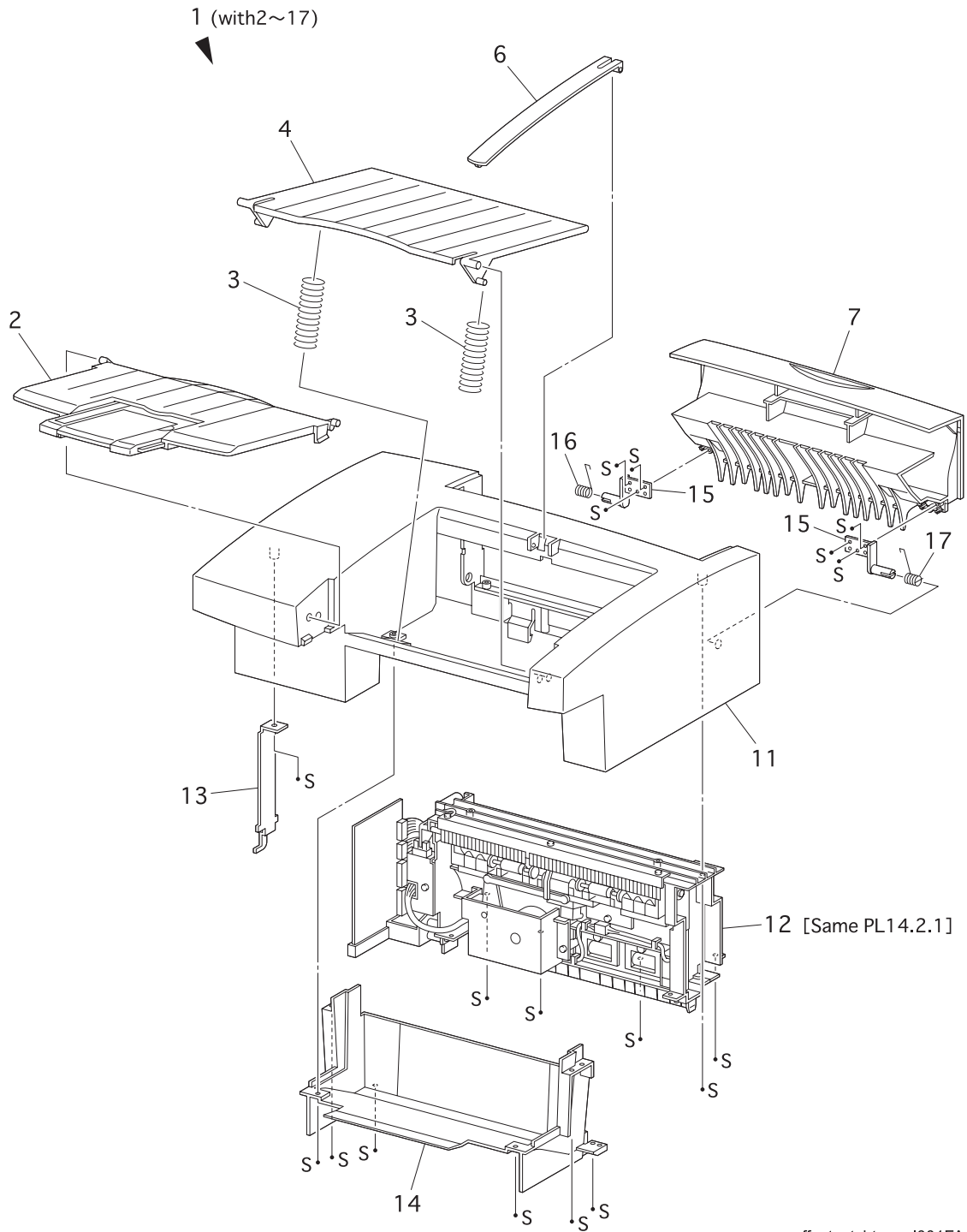
**Section 12 - Parts List****Contents**

PL14.1 Offset Catch Tray I .....	12-2
PL14.2 Offset Catch Tray II .....	12-4

**Using the Parts List**

1. The numbers shown in each illustration correspond to the parts list number for that illustration.
2. Throughout this manual, parts are identified by the prefix "PL", followed by a number, a decimal point, and another number. For example, PL3.1.12 means the part is item 12 of parts list 3.1.
3. The capital letters "C", "E", and "S" shown in an illustration stand for C-ring, E-ring, and Screw, respectively.
4. A shaded triangle  $t$  in an illustration indicates the item is part of an assembly.
5. The notation "with X~Y" following an part name indicates an assembly that is made up of components X through Y. For example, "1 (with 2~4)" means part 1 consists of part 2, part 3, and part 4.
6. The notation "RS" means that the part is a requested spare. Part numbers for these parts will be provided as soon as they are available.
7. An asterisk  $*$  following a part name indicates the page contains a note about this part.
8. The notation "J1<>J2 and P2" is attached to a wire harness. It indicates that connector jack 1 is attached to one end of the wire harness and connector jack 2 is attached to the other end that is plugged into plug 2.
9. A notation "(part of item 1.1)" indicates that the part is included with item 1.2.1 (PL1.2, line item 1).

### PL14.1 Offset Catch Tray I

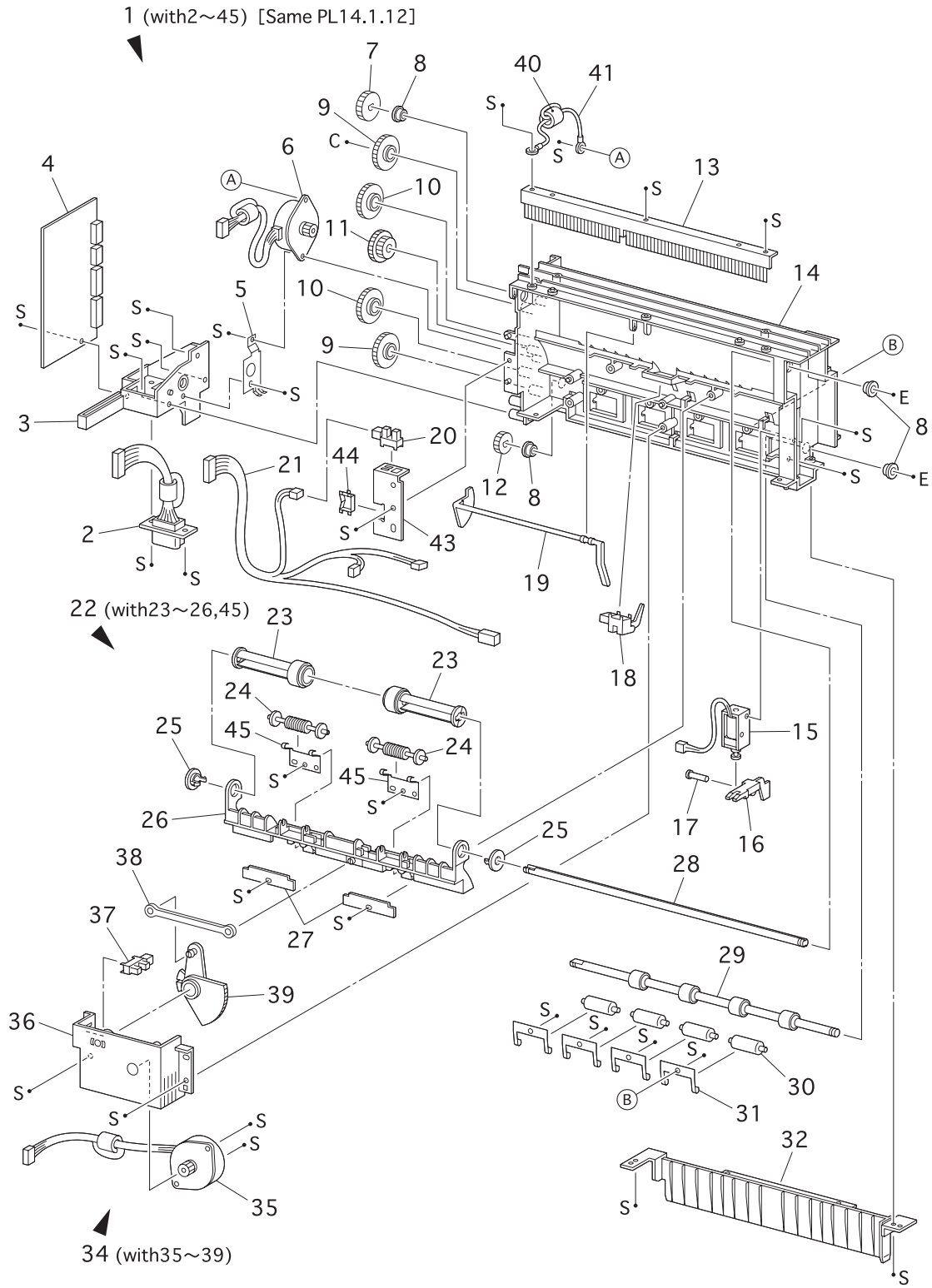


offsetcatchtray pl001FA

**PL14.1 Offset Catch Tray I**

ITEM	PART NAME
1	--- OFFSET CATCH TRAY ASSY (with 2~17)
2	050K38631 TRAY EXIT ASSY
3	--- SPRING TRAY
4	050E89160 TRAY EXIT
5	---
6	012E09551 LINK WEIGHT
7	802E02773 COVER REAR
8	---
9	---
10	---
11	802E02755 COVER OCT
12	054K22380 CHUTE EXIT INNER ASSY [Same PL14.2.1]
13	--- HOOK COVER
14	--- COVER LOWER
15	--- HINGE COVER
16	--- SPRING COVER L
17	--- SPRING COVER R

### PL14.2 Offset Catch Tray II





**PL14.2 Offset Catch Tray II**

ITEM	PART NAME
1	054K22380 CHUTE EXIT INNER ASSY (with 2~45) [Same PL14.1.12]
2	--- HARNESS ASSY OCT UNIT (J202-J209)
3	--- HOLDER PWBA
4	160K88240 PWBA OCT
5	--- PLATE EARTH
6	127K28640 MOTOR DRIVE ASSY
7	--- GEAR EXIT 20
8	--- BEARING EXIT
9	--- GEAR 27
10	--- GEAR 26
11	--- GEAR 47W
12	--- GEAR EXIT
13	--- ELIMINATOR
14	--- HSG GEAR
15	121K20551 SOLENOID DIRECTION
16	011E09450 LEVER SOLENOID
17	--- PIN SOLENOID
18	130K84220 SENSOR ASSY EXIT OCT
19	120E17191 ACTUATOR FULL STACK
20	130E81970 SENSOR FULL STACK
21	--- HARNESS ASSY OCT SNR (J224-225,J226,J227,J228)
22	--- ROLL ASSY OFFSET (with 23~26,45)
23	--- ROLL ASSY EXIT
24	--- ROLL PINCH EXIT
25	--- BEARING OFFSET
26	--- GUIDE OCT
27	--- HOLDER OCT
28	--- SHAFT EXIT
29	--- ROLL ASSY MID OCT
30	--- ROLL PINCH OCT
31	--- SPRING PINCH MID
32	054E14431 CHUTE EXIT INNER
33	---
34	802K05770 OFFSET ASSY (with 35~39)
35	--- MOTOR OFFSET ASSY
36	--- HSG OFFSET
37	130E81970 SENSOR OCT HOME
38	--- LEVER OFFSET
39	--- GEAR CORE
40	--- FERRITE CORE
41	--- WIRE ASSY OCT
42	---
43	--- BRACKET SENSOR
44	--- EDGE SADDLE
45	--- SPRING PINCH EXIT

## Parts List



# Xerox International Partners

Customer : OEL

Product : OEL B6100 Spare Parts

Updated: 6th November 2002

PL code	Item code	Part Number	Name	Note	Subsystem	Fail Rate
1,1	1	048E64591	COVER LEFT		COVERS	0,001
1,1	2	048K76270	COVER ASSY I/F		COVERS	0,001
1,1	4	048E64642	COVER OPTION		COVERS	0,001
1,1	5	048K76455	COVER ASSY TOP	With PL.1.1 item 23	COVERS	0,001
1,1	6	802K51410	CONTROL ASSY PANEL (OEL)	With PL.1.1 item 7	ELECTRICAL	0.010
1,1	7	162K43680	HARNES ASSY PANEL		ELECTRICAL	0.001
1,1	8	048E64612	COVER RIGHT		COVERS	0.001
1,1	9	048K76243	COVER ASSY FRONT	With PL.1.1 items 10-13, 15-17, 20-22 & 26	COVERS	0.005
1,1	14	003E48991	STOPPER COVER		COVERS	0.010
1,1	16	003E43880	STOPPER TRAY		COVERS	0.050
1,1	17	050K37121	TRAY ASSY MBF		MSI	0.050
1,1	19	048E64624	COVER ASSY L/H	No Logo, same as Genicom's EU version	MSI	0.001
1,1	19	802E49470	COVER ASSY L/H OEL		MSI	0.001
1,1	22	354W24254	KL CLIP		COVERS	0.001
1,1	26	004K01870	CLEANING PAD ASSY		MSI	A/R
1,2	10	003E46120	STOPPER		COVERS	0.010
1,2	98	600K79530	KIT CAP ENVELOPE ICE GREEN	Kit = PL.1.2 item 7 (x2)	COVERS	0.100
1,2	99	802K12743	COVER ASSY REAR	With PL.1.2 items 1-9	COVERS	0.100
2,1	5	604K04810	KIT GUIDE END		CST	0.003
2,2	7	005K82890	CLUTCH ASSY FRICTION		CST	0.100
2,2	10	809E11830	SPRING RETARD		CST	0.002
2,2	22	127K24682	MOTOR ASSY		CST	0.050
2,2	25	114E11680	CONNECTOR		CST	0.001
2,2	99	600K79550	KIT ROLL FEED	Same as PL.3.1 item 99 & PL.11.2 item 99. Kit = PL.2.2 item 8 & PL.3.1 item 26 (x2)	FEEDER	A/R
3,1	1	022K51531	ROLL ASSY TURN 1		FEEDER	0.020
3,1	2	121K20151	CLUTCH ASSY TURN	Same as PL.11.2 item 3	FEEDER	0.100
3,1	4	809E11630	SPRING CHUTE	Same as PL.11.2 item 5	FEEDER	0.001
3,1	6	120E16960	ACTUATOR N/P	Same as PL.11.2 item 6	FEEDER	0.050
3,1	7	830E18132	SUPPORT ACTUATOR	Same as PL.11.2 item 7	FEEDER	0.001
3,1	13	130E81970	SENSOR PHOTO	Same as PL.4.1 item 19, PL.5.1 item 12, PL.7.1 item 16, PL.11.2 item 13, PL.12.2 item 22, PL.13.2 item 14, PL.14.2 item 20 & PL.14.2 item 37	FEEDER	0.001
3,1	14	162K47211	HARNES ASSY N/SNSR	Same as PL.11.2 item 14	FEEDER	0.001
3,1	19	600K79320	FEEDER ASSY		FEEDER	0.100
3,1	36	160K52781	PWBA FEEDER	Same as PL.11.2 item 36	FEEDER	0.002
3,1	37	121K19010	CLUTCH ASSY FEED	Same as PL.11.2 item 37	FEEDER	0.100
3,1	96	600K79640	KIT SOCKET & HARNES	Kit = PL.3.1 items 39 & 40 Same as PL.11.2 item 96	FEEDER	0.002
3,1	97	600K79652	KIT ACTUATOR & SUPPORT	Kit = PL.3.1 items 11, 12 & 18 Same as PL.11.2 item 97	FEEDER	0.050
3,1	98	022K56902	KIT FEEDER ASSY 1	Kit = PL.3.1 items 1-44 Same as PL.11.2 item 98	FEEDER	0.600
3,1	99	600K79550	KIT ROLL FEED	Refer to PL.2.2 Item 99 for details	FEEDER	--
4,1	1	054K22391	CHUTE MBF ASSY	With PL.4.1 items 2-31	MSI	0.500
4,1	6	022K50815	ROLL ASSY MBF		MSI	0.100
4,1	12	120E17121	ACTUATOR N/P MBF		MSI	0.050
4,1	15	019K94573	PAD ASSY RETARD		MSI	0.050
4,1	19	130E81970	SENSOR PHOTO	Refer to PL.3.1 item 13 for details	MSI	--
4,1	23	121E85920	SOLENOID PICK UP		MSI	0.050
4,1	24	809E20171	SPRING MBF		MSI	0.001
4,1	25	007E54661	GEAR PICK UP		MSI	0.005
4,1	27	113K82141	CONNECTOR ASSY ENV		MSI	0.005
4,1	29	162K47021	HARNES ASSY MBF N/P		MSI	0.001
4,1	31	019K96831	PAD PICK UP ASSY		MSI	0.050
5,1	4	054K14985	P/H ASSY	With PL.5.1 items 2, 5-31, 36-39	PAP XPORT	0.100
5,1	7	059K11911	ROLL REGI RUBBER		PAP XPORT	0.002
5,1	10	120E13331	ACTUATOR REGI		PAP XPORT	0.020
5,1	11	809E19722	SPRING SENSOR REGI		PAP XPORT	0.001
5,1	12	130E81970	SENSOR PHOTO	Refer to PL.3.1 item 13 for details	PAP XPORT	--
5,1	14	809E22950	SPRING REGI R		PAP XPORT	0.001
5,1	15	007E54671	GEAR REGI METAL		PAP XPORT	0.001
5,1	16	007E54681	GEAR REGI RUBBER		PAP XPORT	0.001
5,1	19	121E85821	CLUTCH REGI		PAP XPORT	0.100
5,1	28	162K47011	HARNES ASSY REGI		PAP XPORT	0.001
5,1	34	006E60981	SHAFT 14		PAP XPORT	0.001
5,1	35	007E54650	GEAR 14		PAP XPORT	0.001
5,1	36	809E19030	SPRING REGI L		PAP XPORT	0.001
5,1	99	600K79381	KIT TONER SENSOR	With PL.5.1 items 1-3, 32 & 33	XEROGRAPHICS	0.050
6,1	2	022K55010	BTR ASSY		XEROGRAPHICS	0.200
6,1	3	054K15000	CHUTE TRANS ASSY	With PL.6.1 items 4-6, 13	PAP XPORT	0.030
6,1	7	126K14941	FUSER ASSY 230V		FUSER	5.00
6,1	12	962K06310	HARNES ASSY FUSER-M 230V		FUSER	0.001
7,1	1	105K14904	ELIMINATOR EXIT		EXIT	0.002
7,1	2	120E13350	ACTUATOR FULL STACK		EXIT	0.050



# Xerox International Partners

Customer : OEL

Product : OEL B6100 Spare Parts

Updated: 6th November 2002

PL code	Item code	Part Number	Name	Note	Subsystem	Fail Rate
7,1	7	059K11950	ROLL ASSY MID-1		EXIT	0.020
7,1	11	059K11960	ROLL ASSY MID-2		EXIT	0.020
7,1	16	130E81970	SENSOR PHOTO	Refer to PL 3.1 item 13 for details	EXIT	--
7,1	17	162K46981	HARNESS ASSY FS SNR		EXIT	0.001
7,1	21	127K35830	MOTOR ASSY EXIT		EXIT	0.020
7,1	98	600K79540	KIT BEARING	Kit = PL7.1 item 6 (x6)	EXIT	0.005
7,1	99	054K22170	CHUTE EXIT ASSY	With PL7.1 items 1-16, 19-25	EXIT	0.050
8,1	4	675K00020	CRU-OEL		XEROGRAPHICS	0.0
8,1	4	032K94111	CRU TOP GUIDE ASSY	With PL8.1 item 3	XEROGRAPHICS	0.050
8,1	7	962K14480	HARNESS ASSY ROS/VDO		XEROGRAPHICS	0.001
8,1	9	062K11210	ROS ASSY		XEROGRAPHICS	0.200
8,1	13	007K87580	GEAR ASSY DRIVE		DRIVE	0.050
8,1	14	127K35701	MOTOR ASSY MAIN (N)		DRIVE	0.100
8,1	99	032K96660	KIT SENSOR CRU OKI	With PL8.1 items 2, 5 & 6	XEROGRAPHICS	0.002
9,1	7	127E13840	FAN ASSY		ELECTRICAL	0.020
9,1	13	162K47001	HARNESS ASSY FEEDER		ELECTRICAL	0.001
9,1	19	160K52771	PWBA SIZE 1		ELECTRICAL	0.002
9,1	20	162K48420	HARNESS ASSY SIZE M	Same as PL11.01.13	ELECTRICAL	0.001
9,1	99	802K09970	KIT SIZE SENSOR 1	With PL9.1 items 13-16, 19-21	ELECTRICAL	0.050
10,1	1	162K47201	HARNESS ASSY ESS		ELECTRICAL	0.001
10,1	2	160K91620	PWB ESS (CONTROLLER)		ELECTRICAL	0.250
10,1	3	101K39511	PANEL BACK ASSY OKI		ELECTRICAL	0.001
10,1	4	162K49271	HARNESS ASSY OCT-M		ELECTRICAL	0.001
10,1	7	110K08571	SWITCH ASSY I/L REAR		ELECTRICAL	0.005
10,1	9	162K46991	HARNESS ASSY DUP-M		ELECTRICAL	0.002
10,1	10	162K46942	HARNESS ASSY CONN		ELECTRICAL	0.001
10,1	11	160K52761	PWBA CONN		ELECTRICAL	0.002
10,1	12	110K08561	SWITCH ASSY I/L FRONT		ELECTRICAL	0.005
10,1	13	160K85653	PWBA HKB 26 MCU		ELECTRICAL	0.250
10,1	14	105K15402	PWB HKB 5VDC		ELECTRICAL	0.050
10,1	15	162K46972	HARNESS ASSY LVPS		ELECTRICAL	0.001
10,1	17	105K19860	PWBA LVPS 230V		ELECTRICAL	0.180
10,1	18	110E94430	MAIN SWITCH		ELECTRICAL	0.002
10,1	19	162K46962	HARNESS ASSY HVPS		ELECTRICAL	0.001
10,1	20	105K19750	PWBA HVPS		ELECTRICAL	0.050
10,1	99	DH100199	BLANKING PLATE ESS OKI		ELECTRICAL	0.001
11,1	3	007E54920	GEAR OPT 1		OPT. FEEDER	0.001
11,1	5	162K48431	HARNESS ASSY SIZE OPTION		OPT. FEEDER	0.001
11,1	7	160K53061	PWBA SIZE OPTION		OPT. FEEDER	0.002
11,1	16	802E04931	HOUSING SIDE R		OPT. FEEDER	0.020
11,1	17	022K56912	FEEDER ASSY	Same as PL11.2 item 1	OPT. FEEDER	0.600
11,1	19	802E04920	HOUSING SIDE L		OPT. FEEDER	0.020
11,1	98	600K79670	KIT SCREW	Kit = PL11.1 item 20 (x3)	OPT. FEEDER	A/R
11,1	99	802K09980	HOUSING ASSY SIZE SENSOR 2	With PL11.1 items 5-7, 10-13	OPT. FEEDER	0.050
11,2	1	022K56912	FEEDER ASSY	Refer to PL 11.2 item 17 for details	OPT. FEEDER	--
11,2	2	022K55001	ROLL ASSY TURN 2		OPT. FEEDER	0.002
11,2	3	121K20151	CLUTCH ASSY TURN	Refer to PL 3.1 item 2 for details	OPT. FEEDER	--
11,2	5	809E11630	SPRING CHUTE	Refer to PL 3.1 item 4 for details	OPT. FEEDER	--
11,2	6	120E16960	ACTUATOR N/P	Refer to PL 3.1 item 6 for details	OPT. FEEDER	--
11,2	7	830E18132	SUPPORT ACTUATOR	Refer to PL 3.1 item 7 for details	OPT. FEEDER	--
11,2	13	130E81970	SENSOR PHOTO	Refer to PL 3.1 item 13 for details	OPT. FEEDER	--
11,2	14	162K47030	HARNESS ASSY N/SNSR	Refer to PL 3.1 item 14 for details	OPT. FEEDER	--
11,2	36	160K52781	PWBA FEEDER	Refer to PL 3.1 item 36 for details	OPT. FEEDER	--
11,2	37	121K19010	CLUTCH ASSY FEED	Refer to PL 3.1 item 37 for details	OPT. FEEDER	--
11,2	96	600K79640	KIT SOCKET & HARNESS	Refer to PL 3.1 item 96 for details	OPT. FEEDER	--
11,2	97	600K79652	KIT ACTUATOR & SUPPORT	Refer to PL 3.1 item 97 for details	OPT. FEEDER	--
11,2	98	022K56902	KIT FEEDER ASSY 1	Refer to PL 3.1 item 98 for details	OPT. FEEDER	--
11,2	99	600K79550	KIT ROLL FEED	Refer to PL 2.2 Item 99 for details. Kit = PL11.2 item 26 (x3).	OPT. FEEDER	--
12,1	2	054E14453	CHUTE TOP		OPT. ENV. FDR	0.002
12,1	11	031E93291	ARM WEIGHT		OPT. ENV. FDR	0.200
12,1	23	130K60390	SENSOR ASSY EXIT ENV		OPT. ENV. FDR	0.001
12,1	30	059E93940	ROLL PINCH		OPT. ENV. FDR	0.010
12,1	99	600K79310	KIT ROLL ASSY RETARD	With PL12.1 items 3-8	OPT. ENV. FDR	0.002
12,2	3	007E27420	GEAR 29		OPT. ENV. FDR	0.001
12,2	5	007E36080	GEAR 23		OPT. ENV. FDR	0.001
12,2	6	121K87180	CLUTCH ASSY TORQUE 25		OPT. ENV. FDR	0.100
12,2	8	007E28780	GEAR IDLER 21		OPT. ENV. FDR	0.001
12,2	9	121K87201	CLUTCH ASSY ONE WAY 26		OPT. ENV. FDR	0.100
12,2	11	121K87190	CLUTCH ELEC 29		OPT. ENV. FDR	0.100
12,2	12	006E47120	SHAFT CLUTCH ELEC 17		OPT. ENV. FDR	0.001
12,2	13	121K87210	CLUTCH ASSY ONE WAY 26A		OPT. ENV. FDR	0.100
12,2	18	059E91910	ROLL PINCH ENV		OPT. ENV. FDR	0.002
12,2	22	130E81970	SENSOR PHOTO	Refer to PL 3.1 item 13 for details	OPT. ENV. FDR	--
12,2	23	059K13390	ROLL ASSY FEED 1		OPT. ENV. FDR	0.020
12,2	25	059K13401	ROLL ASSY FEED 2		OPT. ENV. FDR	0.020



# Xerox International Partners

Customer : OEL

Product : OEL B6100 Spare Parts

Updated: 6th November 2002

PL code	Item code	Part Number	Name	Note	Subsystem	Fail Rate
13,1	4	054K15061	CHUTE ASSY UPPER DUP		DUPLEX OPT.	0.002
13,2	2	059K12151	ROLL ASSY DUP		DUPLEX OPT.	0.010
13,2	3	003E47580	STOPPER BELT DUP		DUPLEX OPT.	0.001
13,2	8	127K36520	MOTOR ASSY DUP-26PPM		DUPLEX OPT.	0.010
13,2	9	423W15455	BELT SYNCHRONOUS		DUPLEX OPT.	0.002
13,2	14	130E81970	SENSOR PHOTO	Refer to PL 3.1 item 13 for details	DUPLEX OPT.	--
13,2	16	160K53051	PWBA DUP		DUPLEX OPT.	0.020
13,2	18	130K83310	SENSOR ASSY DUP		DUPLEX OPT.	0.001
14,1	2	050K38631	TRAY EXIT ASSY		OPT. OCT	0.002
14,1	4	050E89160	TRAY EXIT		OPT. OCT	0.002
14,1	6	012E09551	LINK WEIGHT		OPT. OCT	0.020
14,1	7	802E02773	COVER REAR		OPT. OCT	0.010
14,1	11	802E02755	COVER OCT		OPT. OCT	0.100
14,1	12	054K22380	CHUTE EXIT INNER ASSY	Same as PL14.2 item 1	OPT. OCT	0.020
14,2	1	054K22380	CHUTE EXIT INNER ASSY	Refer to PL 14.1 item 12 for details	OPT. OCT	--
14,2	4	160K88240	PWBA OCT		OPT. OCT	0.002
14,2	6	127K28640	MOTOR DRIVE ASSY		OPT. OCT	0.020
14,2	15	121K20551	SOLENOID DIRECTION		OPT. OCT	0.050
14,2	16	011E09450	LEVER SOLENOID		OPT. OCT	0.050
14,2	18	130K84220	SENSOR ASSY EXIT OCT		OPT. OCT	0.001
14,2	19	120E17191	ACTUATOR FULL STACK		OPT. OCT	0.020
14,2	20	130E81970	SENSOR PHOTO	Refer to PL 3.1 item 13 for details	OPT. OCT	--
14,2	32	054E14431	CHUTE EXIT INNER		OPT. OCT	0.002
14,2	34	802K05770	OFFSET ASSY		OPT. OCT	0.020
14,2	37	130E81970	SENSOR PHOTO	Refer to PL 3.1 item 13 for details	OPT. OCT	--
99,99	87	09004057	IPDS EMULATION OKI		ELECTRICAL	A/R
99,99	88	09004056	16MB FLASH MEMORY OKI		ELECTRICAL	A/R
99,99	89	09004055	RS232/422 INTERFACE OKI		ELECTRICAL	A/R
99,99	90	09004054	HARD DRIVE OKI		ELECTRICAL	A/R
99,99	91	09004053	NIC OKI		ELECTRICAL	A/R
99,99	92	600K83070	REPACK KIT BOX BOTTOMS	PALLET OF 20	KIT	A/R
99,99	93	600K79660	HARDWARE KIT	bag of assorted screws	KIT	A/R
99,99	94	600K84180	REPAIR KIT HOLDER BTR	Kit = PL6.1 item 14 (x100)	FUSER	A/R
99,99	95	DH999995	REPACK KIT BOX (OEL)	Pack of 20 boxes	KIT	A/R
99,99	98	604K02720	REPACK KIT PADS TOP/BOT	Pallet of foam shipping pads. 6 each of top 2 & bottom 2 pads - enough for 6 printers.	KIT	A/R
Notes:-						
= 220 V / 110V variants available (ODA / OEL unique parts available).						
1) Failure rate is quoted as failures per million prints						
2) A/R = "As Required". A failure rate is not appropriate for these parts.						