

SHARP PARTS GUIDE

CODE:00ZAL1035P001

**DIGITAL MULTIFUNCTIONAL
SYSTEM**

Revised Edition

MODEL AL-1035

CONTENTS

- 1 Exteriors
- 2 Scanner section
- 3 Paper feed section
- 4 Fuser section
- 5 Main frame section
- 6 Accessories

DEFINITION

- Rank A : Maintenance parts, and consumable parts which are not included in but closely related to maintenance parts
- Rank B : Performance/function parts (sensors, clutches, and other electrical parts), consumable parts
- Rank E : Unit parts including PWB
- Rank D : Preparation parts (External fitting, packing, parts packed together)
- Rank C : Parts other than the above (excluding sub components of PWB)

Because parts marked with "△" is indispensable for the machine safety maintenance and operation, it must be replaced with the parts specific to the product specification.

- Other than this Parts Guide, please refer to documents Service Manual(including Circuit Diagram)of this model.
- Please use the 13 digit code described in the right hand corner of front cover of the document, when you place an order.
- For U.S. only-Use order codes provided in advertising literature. Do not order from parts department.

<Note for use of the revised Parts Guide>







- Interchangeability of parts is expressed by No1~6 as shown in the table below.

<Interchangeability>

1	Interchangeable.
2	Current type can be used in place of new type. New type cannot be used in place of current type.
3	Current type cannot be used in place of new type. New type can be used in place of current type.
4	Not interchangeable.
5	Interchangeable if replaced with same types of related parts in use.
6	Others.

- New & Addition, Change, Abolition, and Quantity change are expressed with the marks shown in the table below.

<Change of Division>

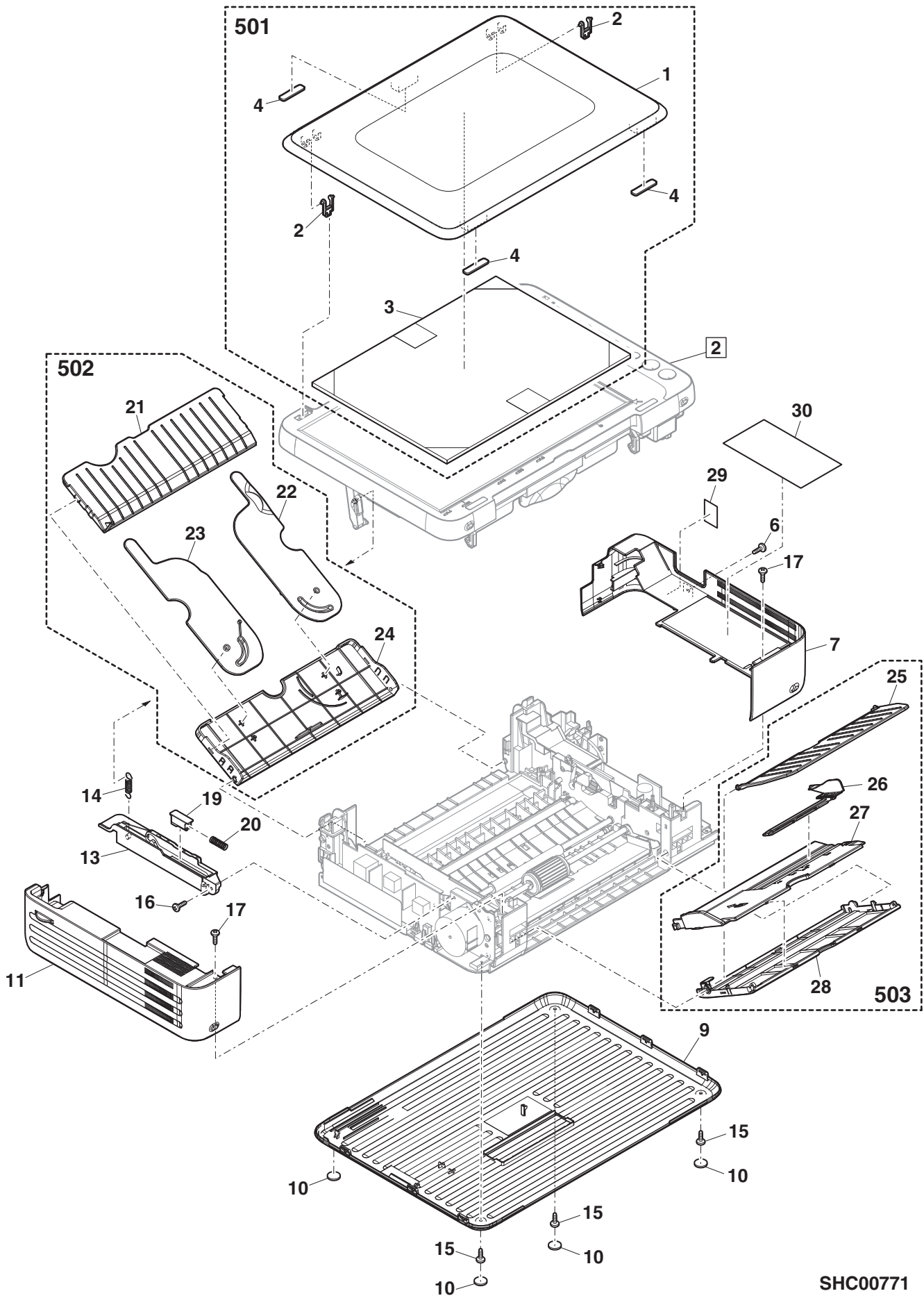
New & Addition	
Change	
Abolition	
Q'antity (increase) /Others	
Q'antity (decrease)	
Correction	

- Running Change of Effective Time is expressed as R/C.

<Effective Time>

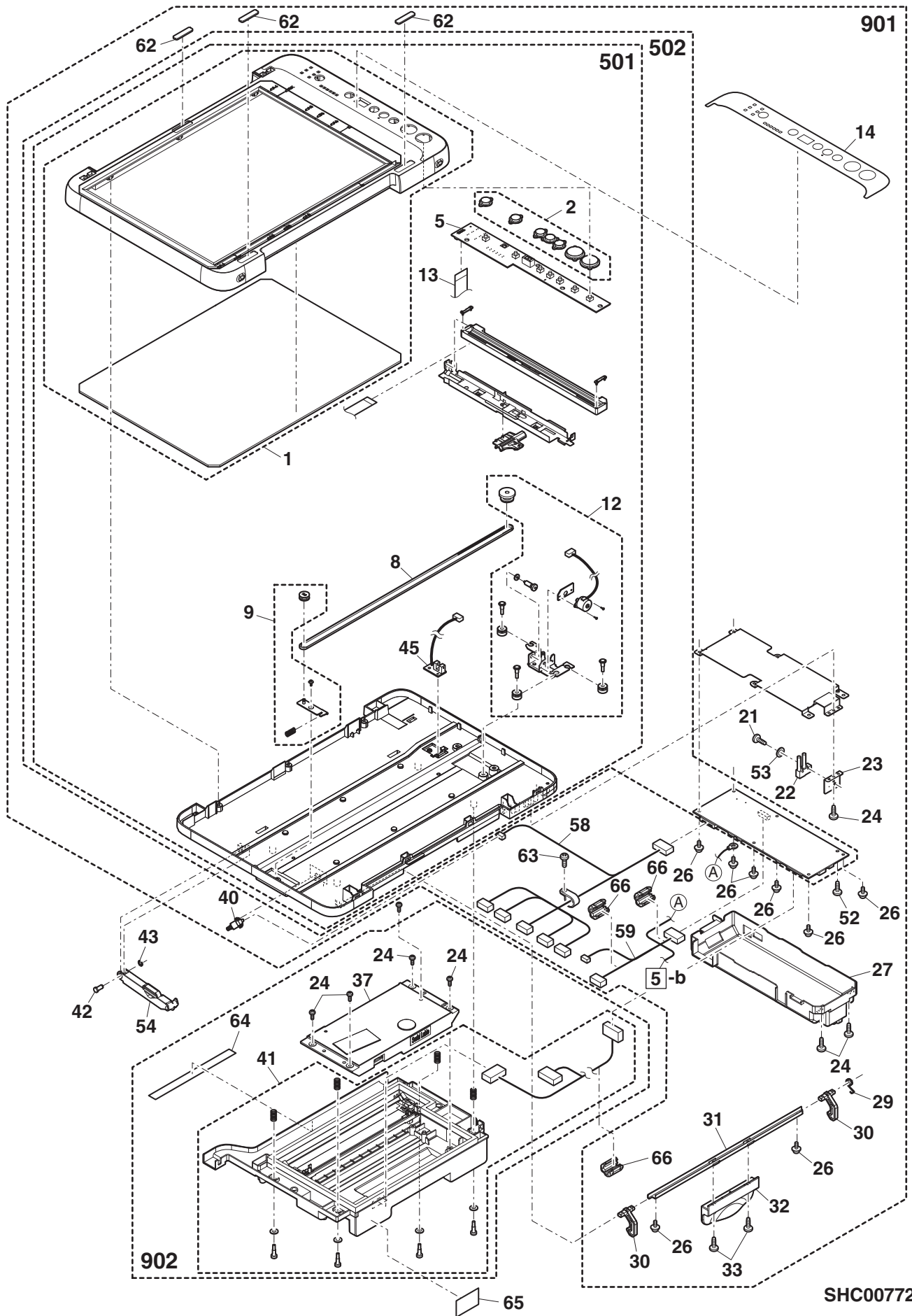
R / C	Running Change
-------	----------------

1 Exteriors



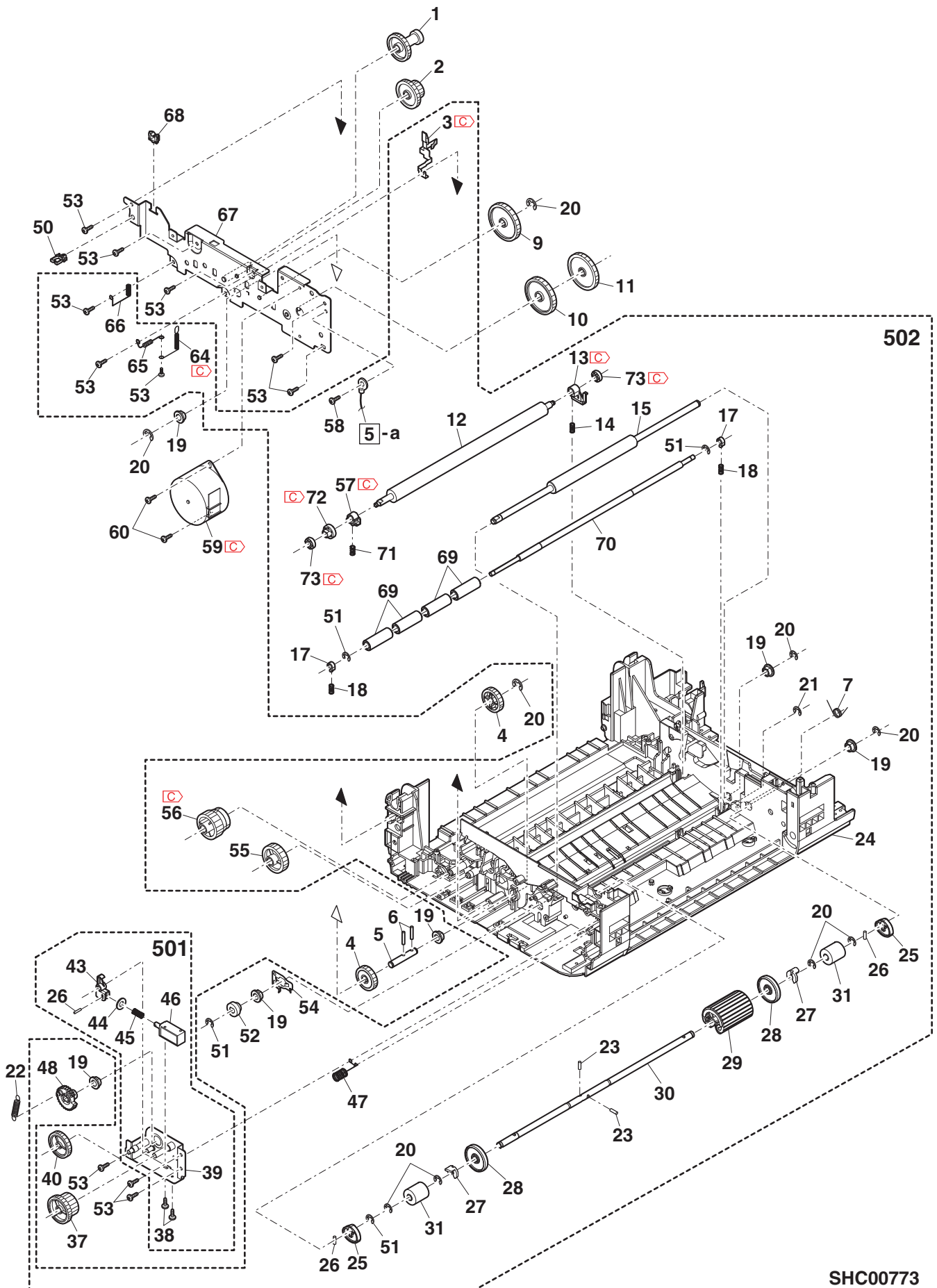
SHC00771

2 Scanner section



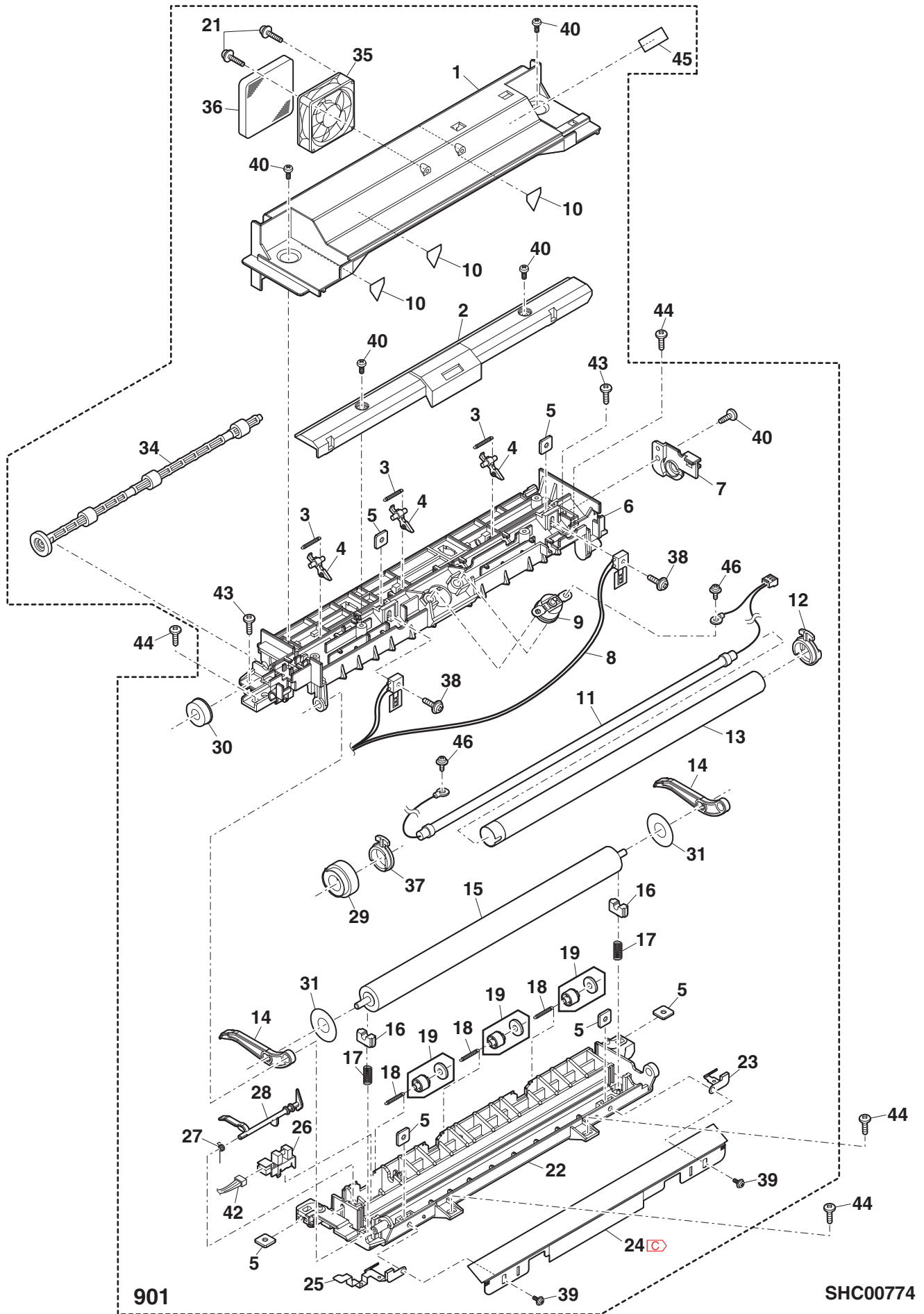
SHC00772

3 Paper feed section



SHC00773

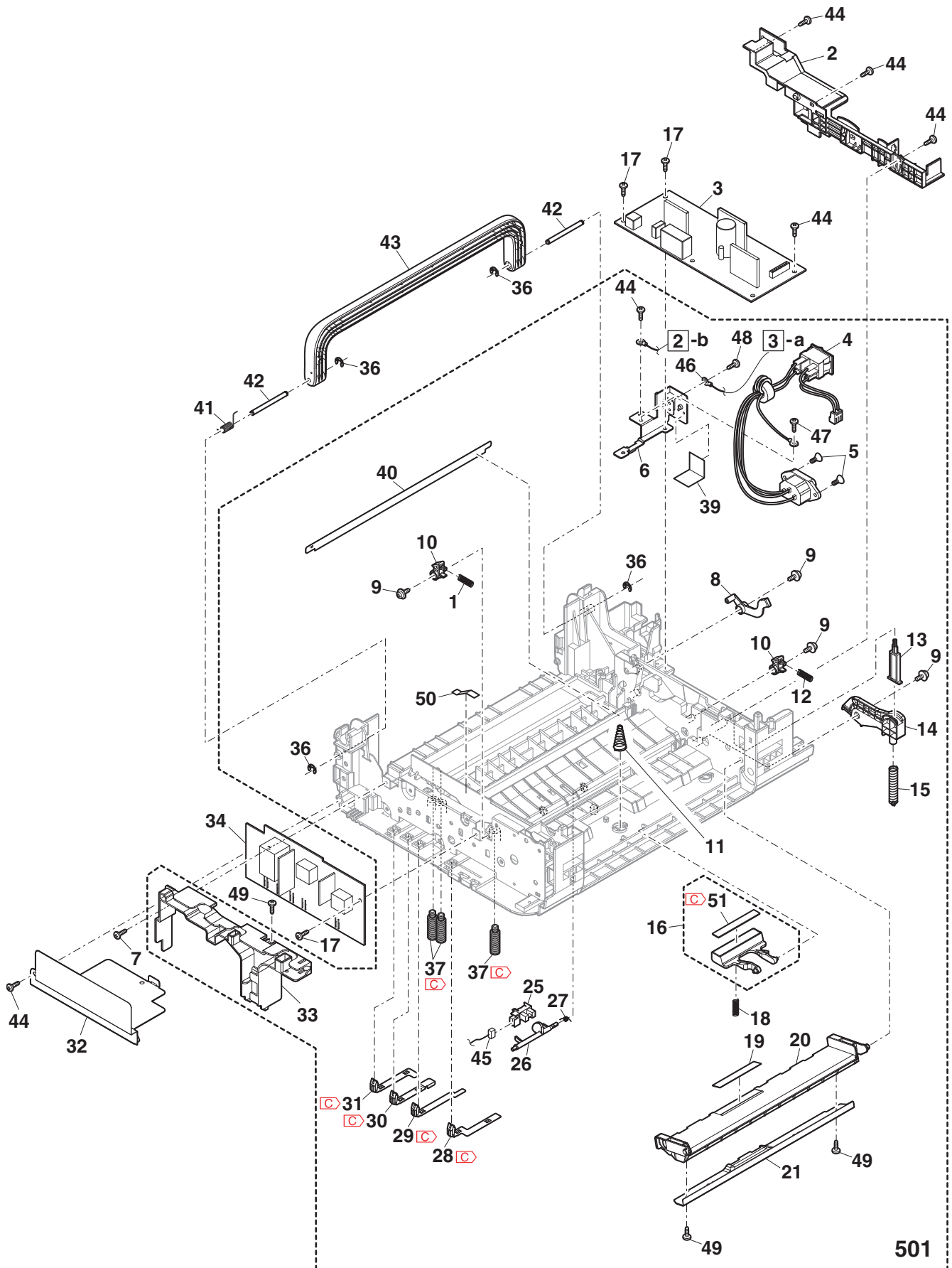
4 Fuser section



901

SHC00774

5 Main frame section



SHC00775

SHARP

COPYRIGHT © 2012 BY SHARP CORPORATION

All rights reserved.

Printed in Japan.

No part of this publication may be reproduced,
stored in a retrieval system, or transmitted.

In any form or by any means,
electronic, mechanical, photocopying, recording, or otherwise,
without prior written permission of the publisher.

SHARP CORPORATION
Document Solutions Group
CS PROMOTION CENTER
Yamatokoriyama, Nara 639-1186, Japan
2012 January Printed in Japan ⓘ