

Chapter 5 Parts List CONTENTS

1. Parts List.....	5 - 1
1.1 Caution for use of spare parts illustration	5 - 1
1.2 Caution for use of engineering parts list	5 - 1
Customer Replaceable Parts Illustration.....	5 - 3
Engineering parts list	5 - 8
PL1.1 Cover (1/2) [Illustration]	5 - 8
PL1.1 Cover (1/2) [List]	5 - 9
PL1.2 Cover (2/2) [Illustration]	5 - 10
PL1.2 Cover (2/2) [List]	5 - 11
PL2.1 Paper Cassette [Illustration]	5 - 12
PL2.1 Paper Cassette [List]	5 - 13
PL3.1 Paper Feeder (1/2) [Illustration].....	5 - 14
PL3.1 Paper Feeder (1/2) [List].....	5 - 15
PL3.2 Paper Feeder (2/2) [Illustration].....	5 - 16
PL3.2 Paper Feeder (2/2) [List].....	5 - 17
PL4.1 Xerographics [Illustration]	5 - 18
PL4.1 Xerographics [List].....	5 - 19
PL5.1 Dispenser [Illustration]	5 - 20
PL5.1 Dispenser [List].....	5 - 21
PL6.1 Transfer & Fuser [Illustration]	5 - 22
PL6.1 Transfer & Fuser [List].....	5 - 23
PL7.1 Drive [Illustration].....	5 - 24
PL7.1 Drive [List].....	5 - 25
PL8.1 Electrical (1/2) [Illustration]	5 - 26
PL8.1 Electrical (1/2) [List].....	5 - 27
PL8.2 Electrical (2/2) [Illustration]	5 - 28
PL8.2 Electrical (2/2) [List].....	5 - 29
PL9.1 Harness [Illustration].....	5 - 30
PL9.1 Harness [List].....	5 - 31
PL11.1 Duplex (2150cdn Only) (1/2) [Illustration]	5 - 32
PL11.1 Duplex (2150cdn Only) (1/2) [List].....	5 - 33
PL11.2 Duplex (2150cdn Only) (2/2) [Illustration]	5 - 34
PL11.2 Duplex (2150cdn Only) (2/2) [List].....	5 - 35
PL12.1 250 Feeder (Option) (1/5) [Illustration]	5 - 36
PL12.1 250 Feeder (Option) (1/5) [List]	5 - 37
PL12.2 250 Feeder (Option) (2/5) [Illustration]	5 - 38
PL12.2 250 Feeder (Option) (2/5) [List]	5 - 39
PL12.3 250 Feeder (Option) (3/5) [Illustration]	5 - 40
PL12.3 250 Feeder (Option) (3/5) [List]	5 - 41
PL12.4 250 Feeder (Option) (4/5) [Illustration]	5 - 42
PL12.4 250 Feeder (Option) (4/5) [List]	5 - 43
PL12.5 250 Feeder (Option) (5/5) [Illustration]	5 - 44
PL12.5 250 Feeder (Option) (5/5) [List]	5 - 45

Chapter 5 Parts List CONTENTS

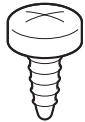
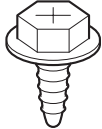
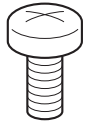
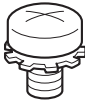
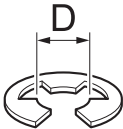
1. Parts List

1.1 Caution for use of spare parts illustration

- Available spare parts are shown in the illustration by name.
- [Ref PL X.Y.Z] shown below the part name denotes the item is "Z" in the plate "PL X.Y" of the engineering part list.
- For the detailed composition of the KIT parts, check with the engineering part list.

1.2 Caution for use of engineering parts list

- The figures indicating the illustrations are the item No. in the list and present correspondence between the illustrations and parts.
- The notation of PL "X.Y.Z" is composed of the plate (PL), item "X.Y", and parts "Z".
- The alphabet characters in the illustrations represent screws and clips as follows:

Type	Shape	PL No.	Size	PARTS No.
Screw for plastic Silver, tapping		ST1	M3X8mm	153W27878
		ST2	M3X16mm	826E17350
		ST3	M4X12mm	826E34160
Screw for plastic Silver, tapping, with flange		ST10	M3X10mm	153W18088
Screw for metal sheet Silver		SM1	M3X4mm	113W27488
		SM2	M3X6mm	826E12480
		SM3	M4X6mm	113W35688
Screw for metal sheet Silver, with an external tooth washer		SM5	M4X6mm	826E25760
Ring-E		E1	D3	354W21278
		E2	D4	354W24278

- "▼" mark in the illustrations are attached to items indicating assembly parts in the illustrations.
- Encircled alphabetical figures in the illustrations indicate interrupted leader lines. Same characters in the illustrations represent lines to be connected.
- The mark "(with 2-5)" attached to assembly parts on the illustrations and lists represents that the items "2, 3, 4, and 5" of that plate are contained and the mark "(with 2-5, PL6.1.1)" represent that the item "2, 3, 4, and 5" of that plate and the item "1" of the plate "6.1" are contained.
- The mark "[Ref PLX.Y.Z]" attached to parts in the illustrations and lists resents that the parts is the same as the parts of the item "Z" of the plate "X.Y".
- The mark "*" attached to parts in the list represents "Note" or "Reference" about that parts is contained in the same page.

NOTE

For spare parts, refer to the "Spare parts list" which is issued separately.

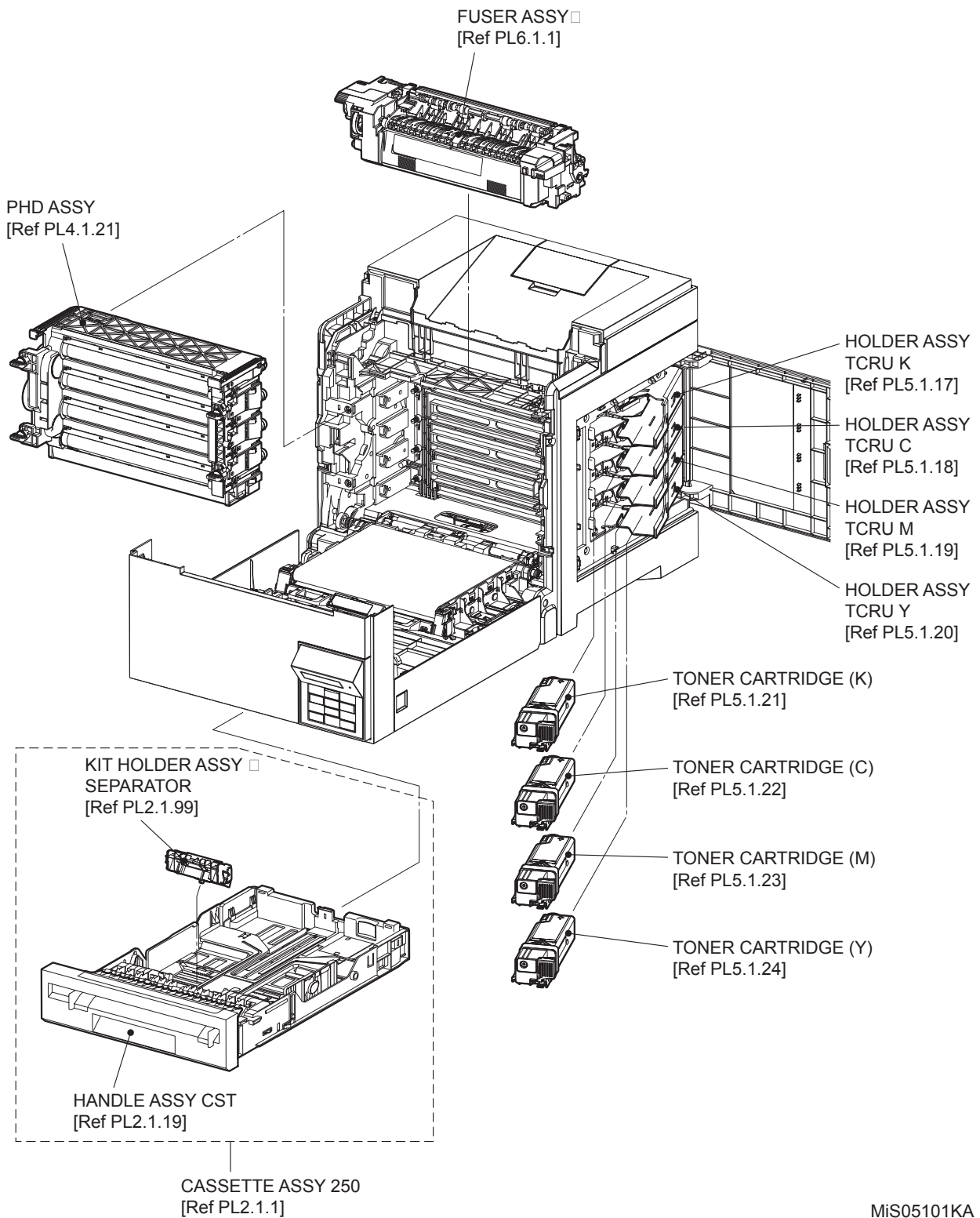
NOTE

For the connector (P/J), parts such as harness, wire, etc. in the list, refer to "Chapter 7, Electric wiring"

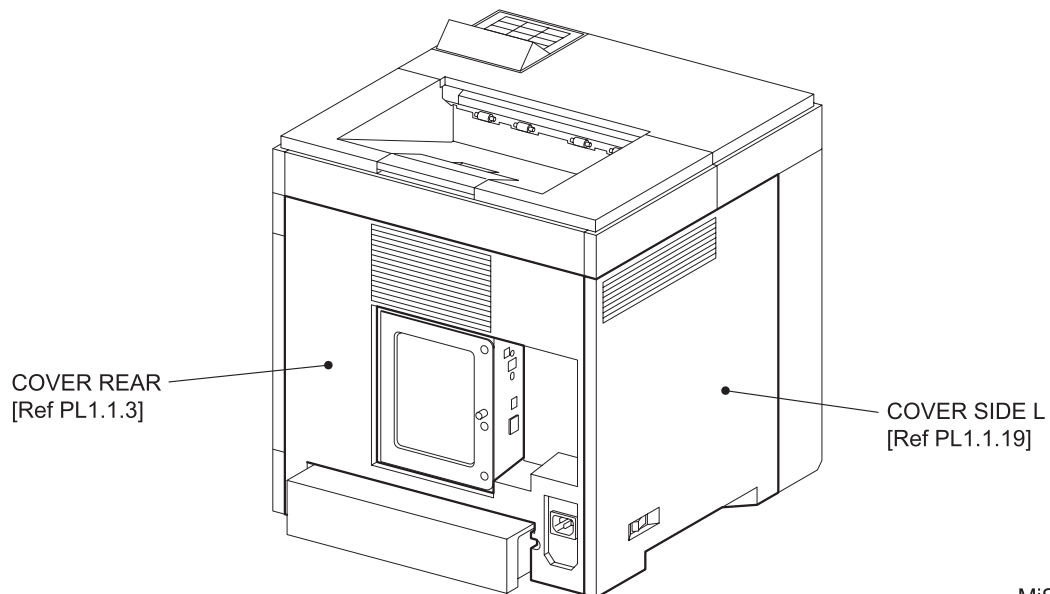
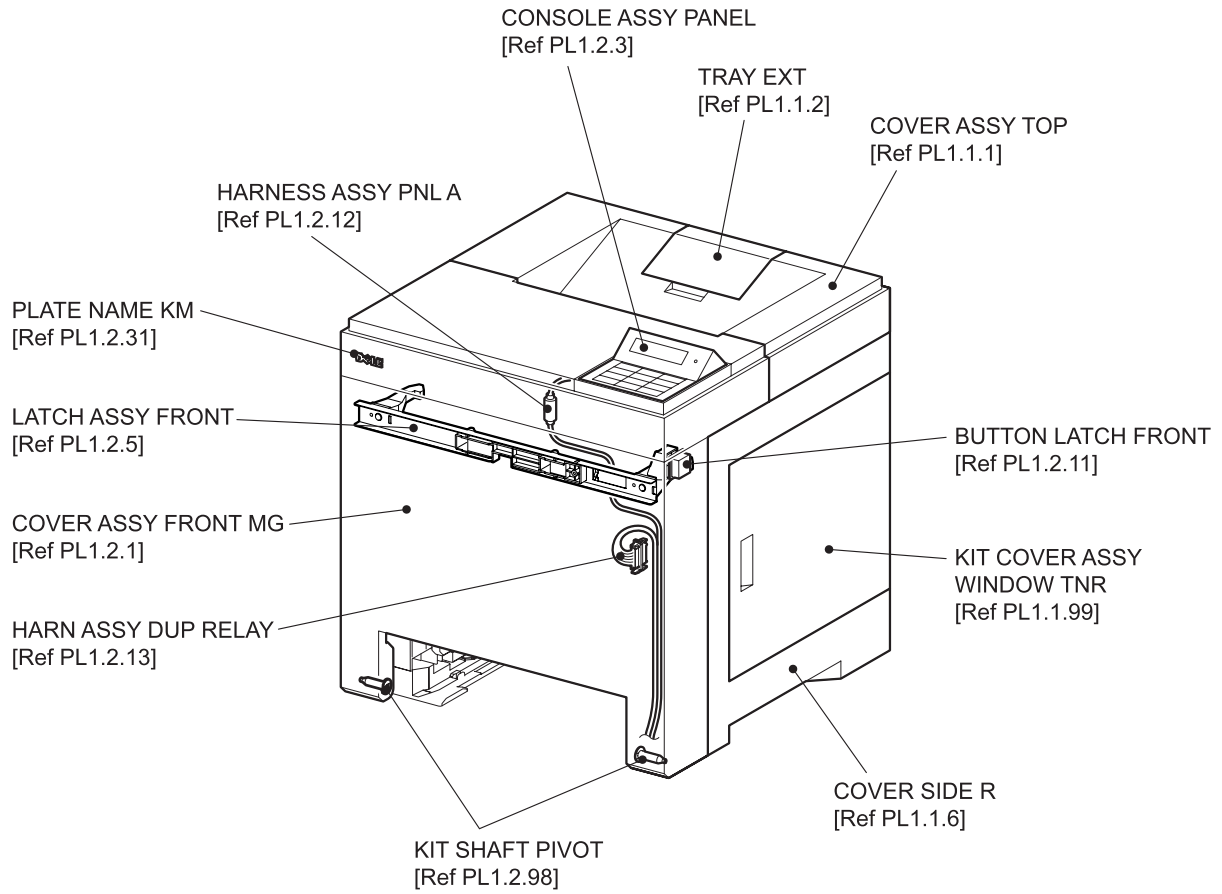
NOTE

It should be noted that configuration of parts may be different or some parts are not used depending on specifications of OEM.

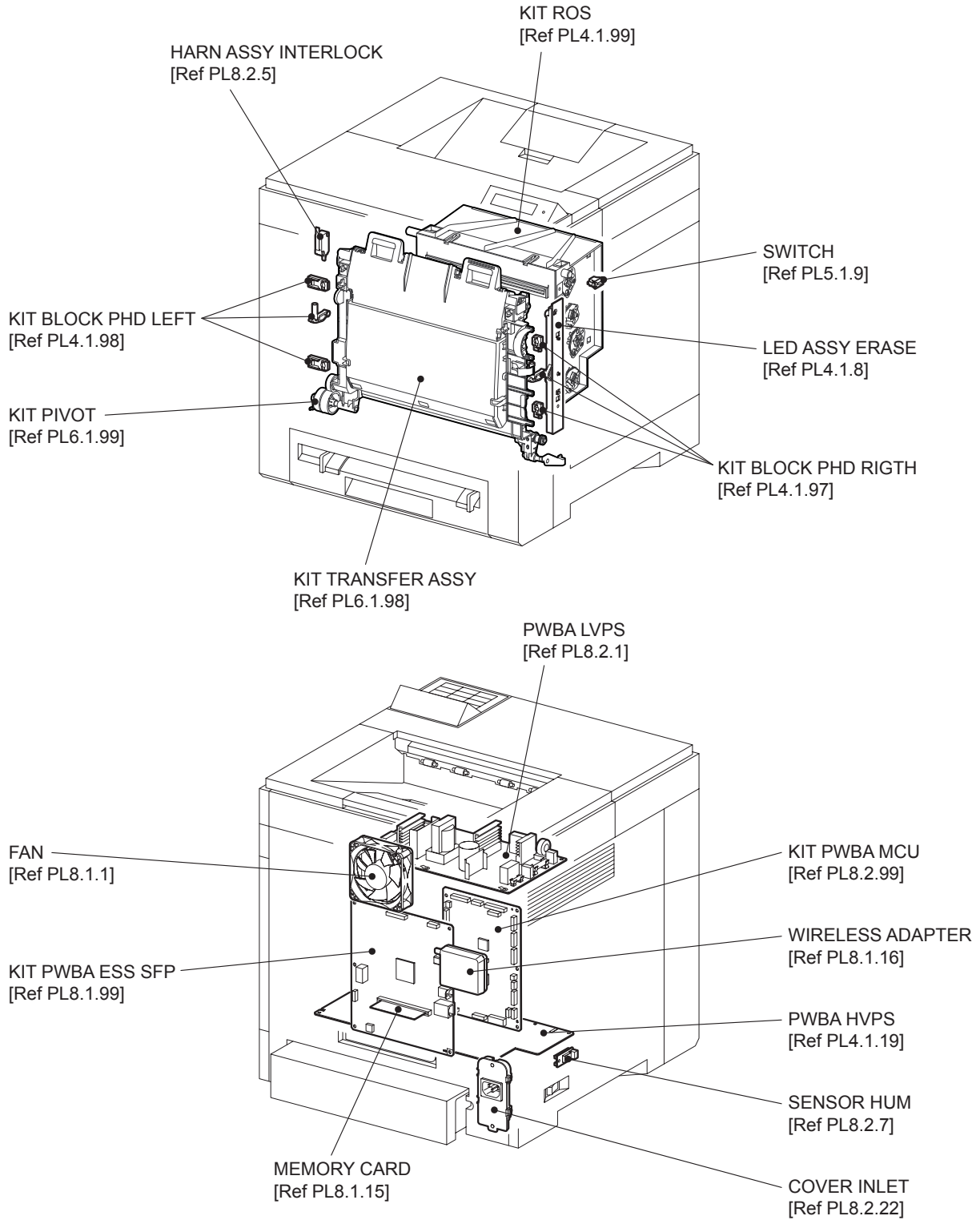
Customer Replaceable Parts Illustration



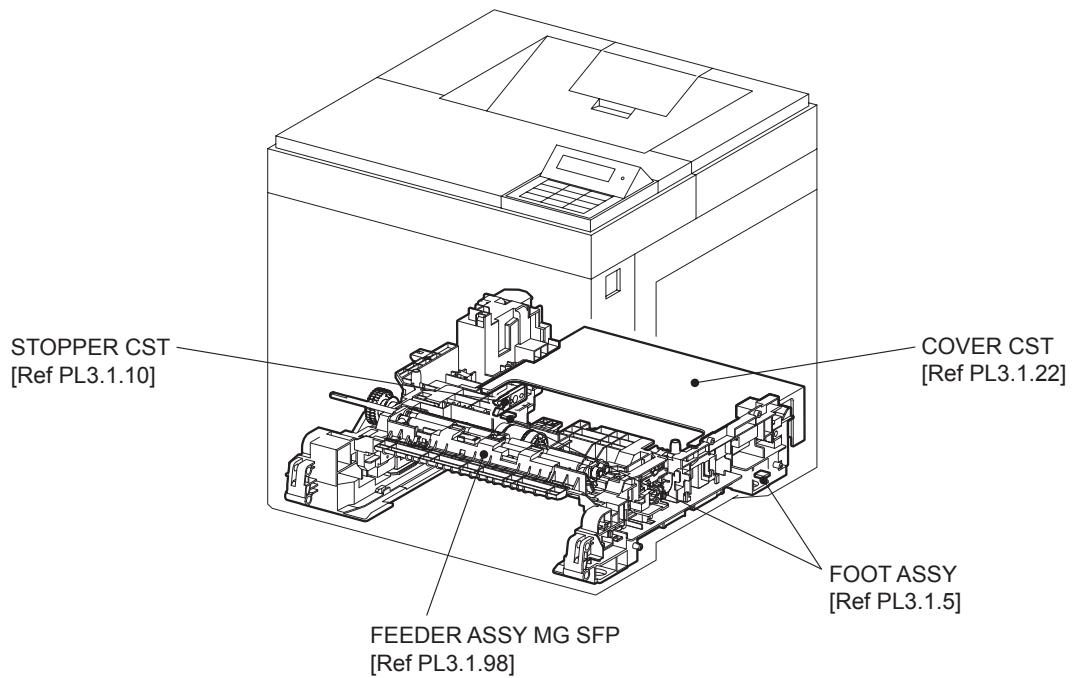
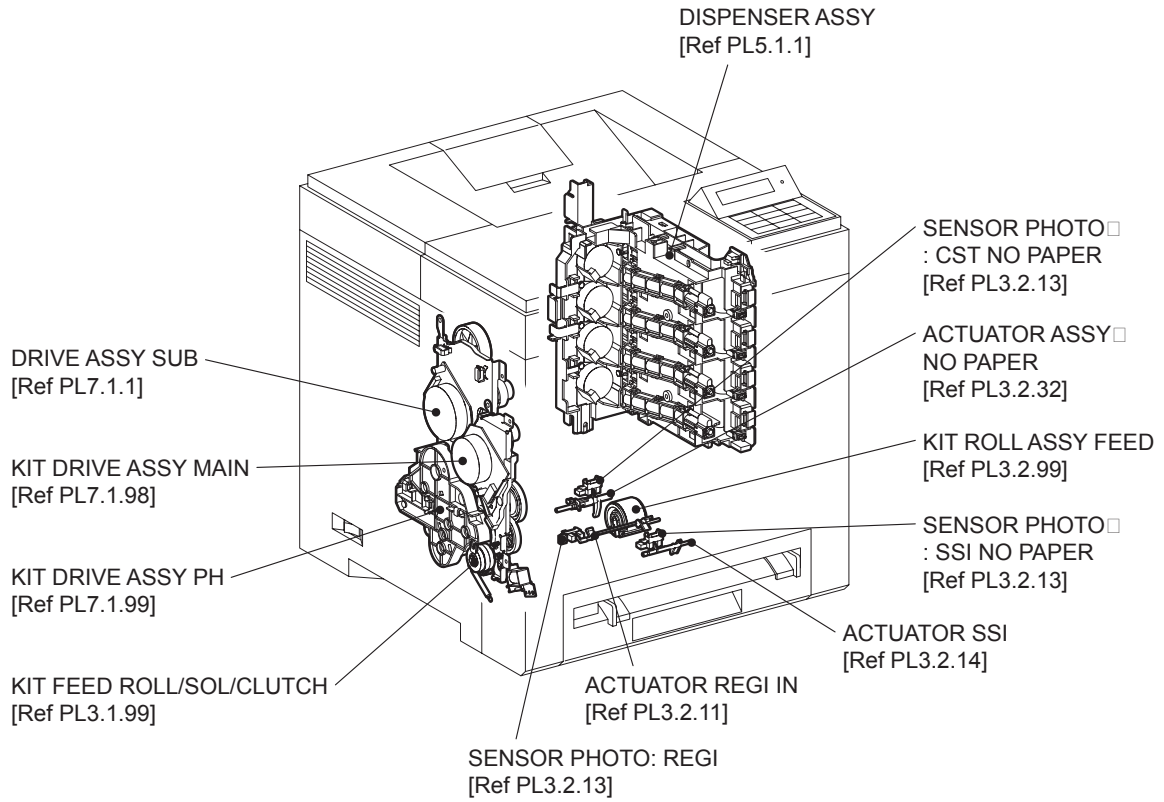
MiS05101KA



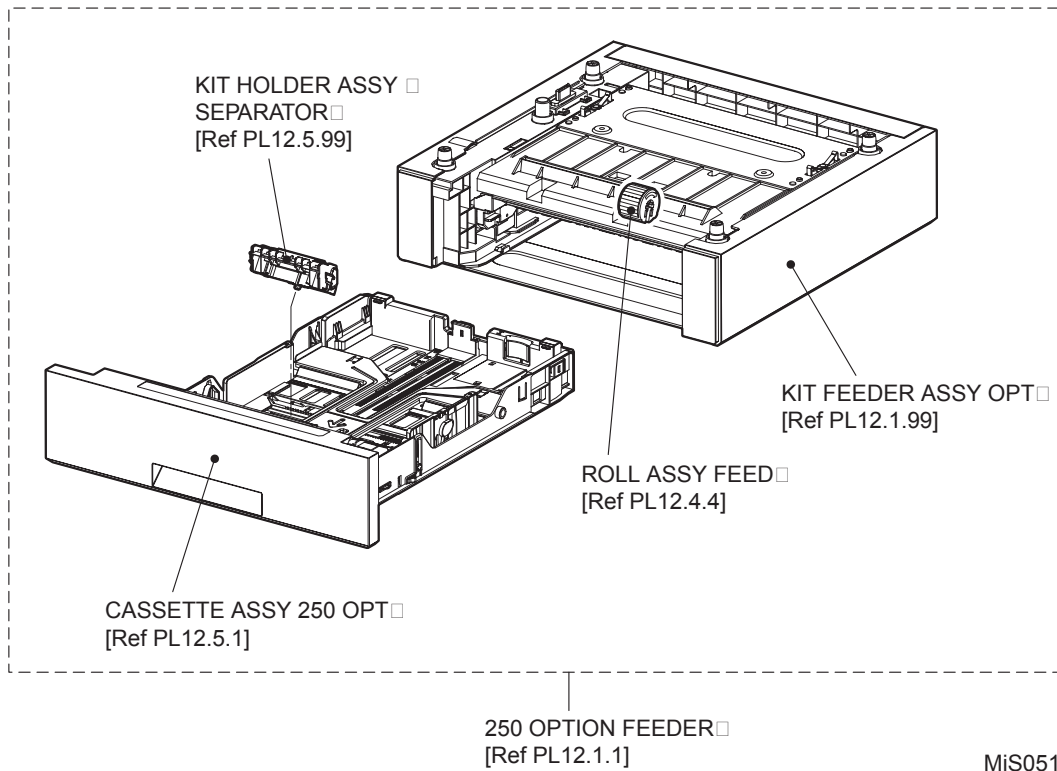
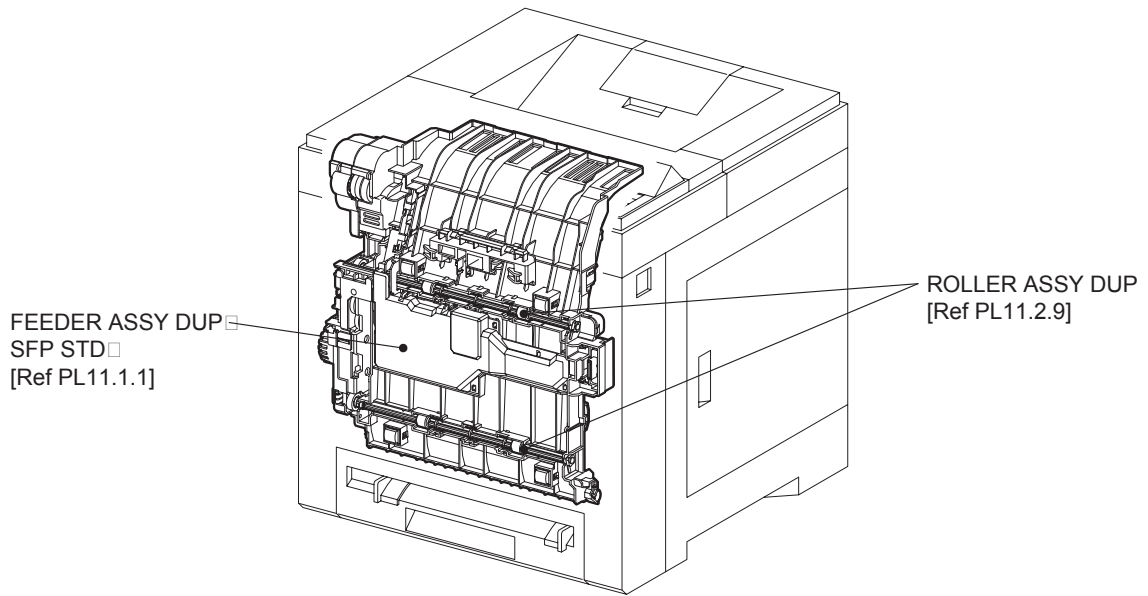
MiS05102KA



MIS05103KA



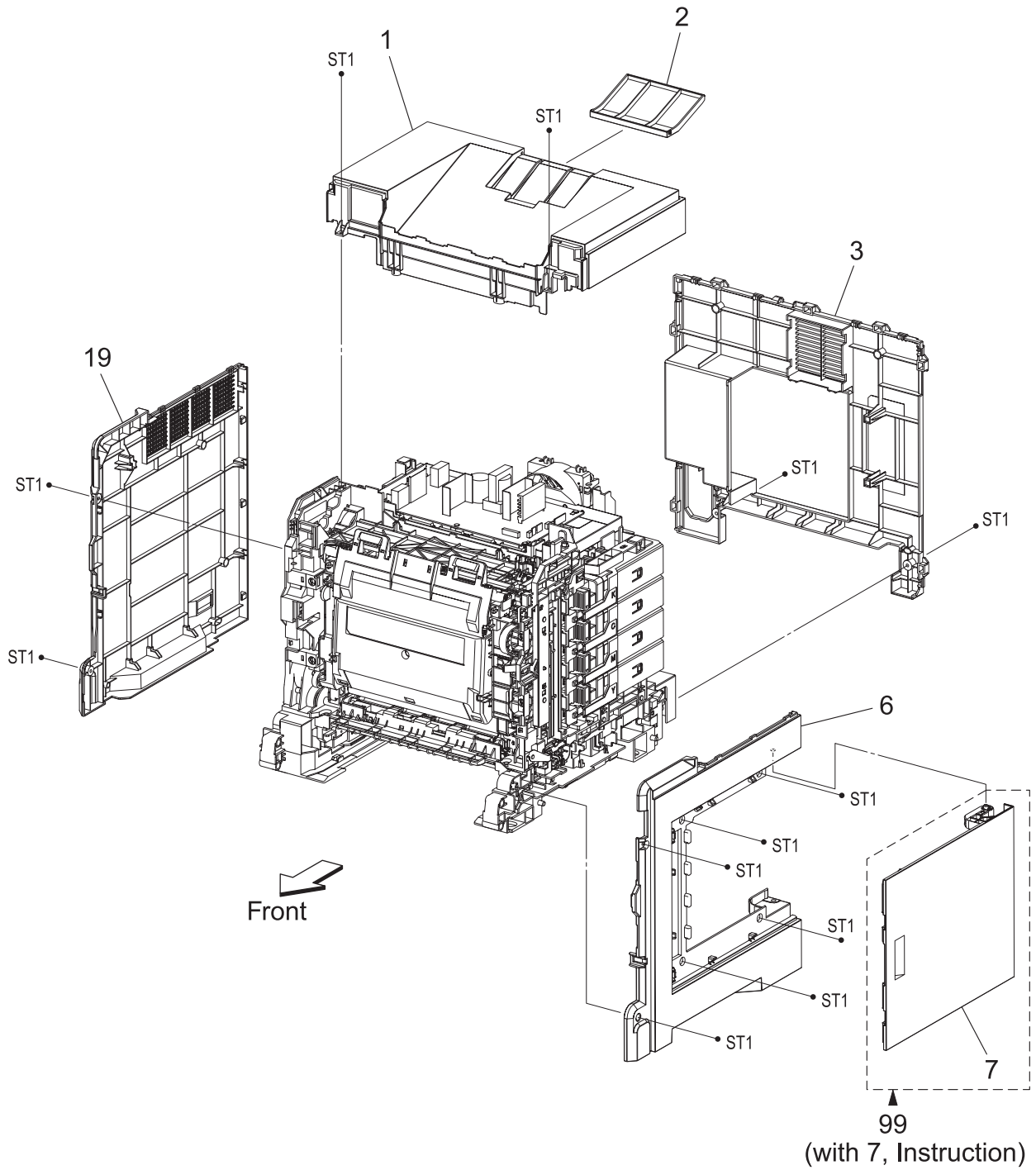
MiS05104KA



MiS05105KB

Engineering parts list

PL1.1 Cover (1/2) [Illustration]

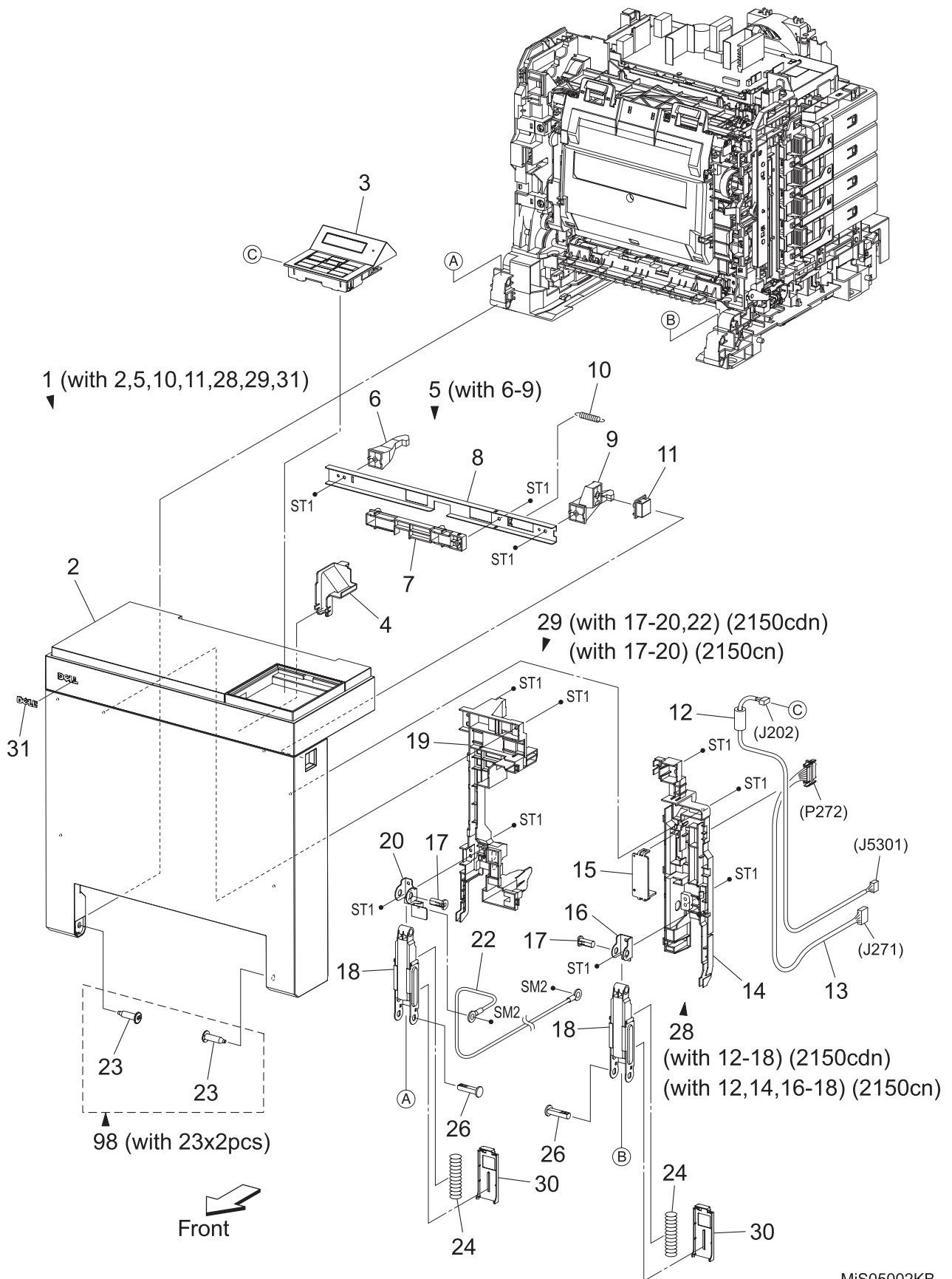


MIS05001KB

PL1.1 Cover (1/2) [List]

Item	Parts name
1	COVER ASSY TOP
2	TRAY EXT
3	COVER REAR
4	--
5	--
6	COVER SIDE R
7	COVER ASSY WINDOW TNR
8	--
9	--
10	--
11	--
12	--
13	--
14	--
15	--
16	--
17	--
18	--
19	COVER SIDE L
20	--
21	--
99	KIT COVER ASSY WINDOW TNR (with 7, Instruction)

PL1.2 Cover (2/2) [Illustration]

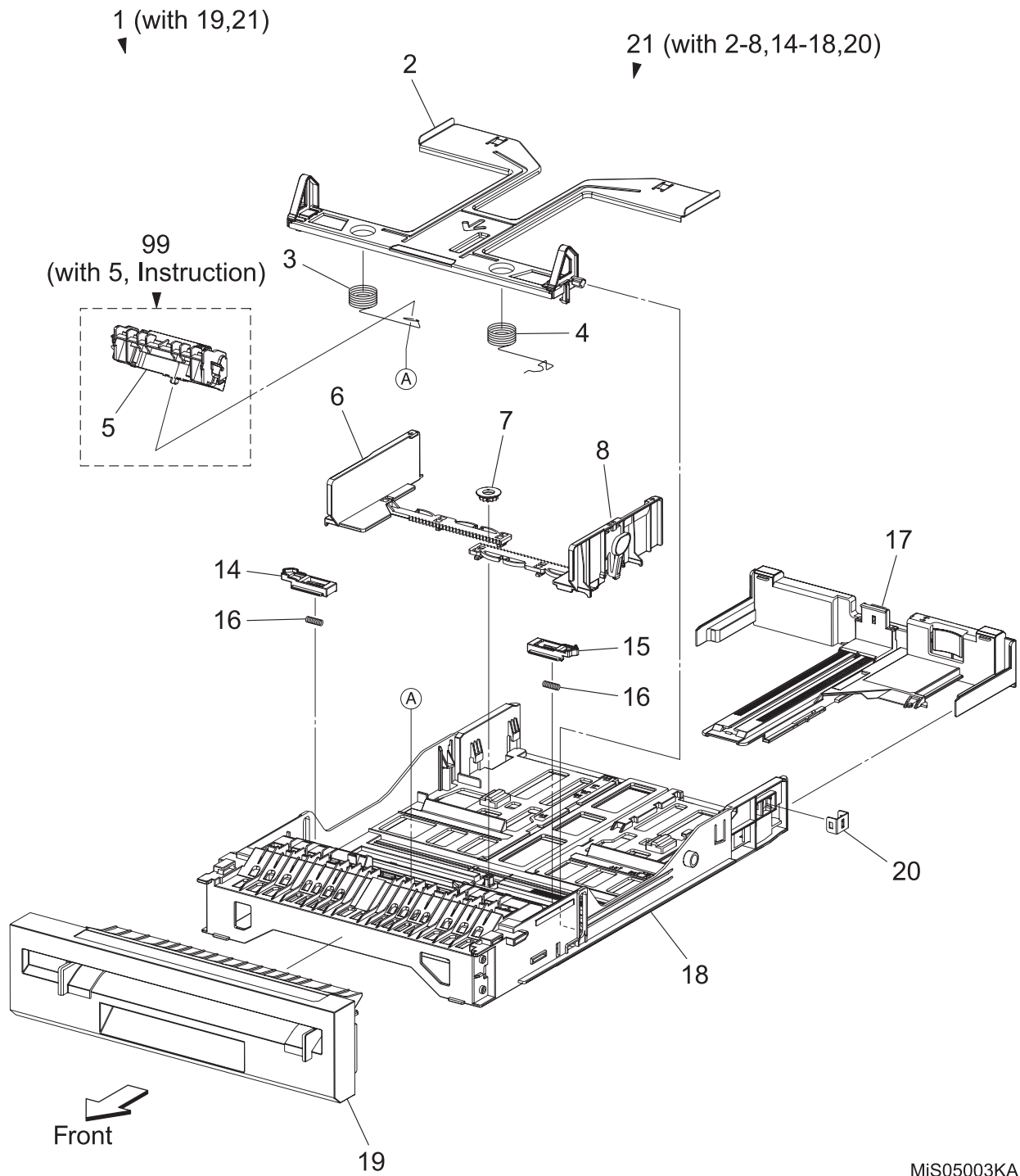


MiS05002KB

PL1.2 Cover (2/2) [List]

Item	Parts name
1	COVER ASSY FRONT MG (with 2,5,10,11,28,29,31)
2	COVER FRONT
3	CONSOLE ASSY PANEL
4	COVER CONNECTOR
5	LATCH ASSY FRONT (with 6-9)
6	LATCH FRONT L
7	LATCH FRONT DUP
8	PLATE LATCH
9	LATCH FRONT R
10	SPRING LATCH FRONT
11	BUTTON LATCH FRONT
12	HARNESS ASSY PNL A (J202-J5301)
13	HARN ASSY DUP RELAY (J271-P272) (2150cdn Only)
14	HOLDER FRONT R
15	COVER DRAWER (2150cdn Only)
16	BRACKET HOLDER R
17	SHAFT LINK FRONT
18	LINK ASSY FRONT
19	HOLDER FRONT L
20	BRACKET HOLDER L
21	--
22	HARN ASSY GND (2150cdn Only)
23	SHAFT PIVOT
24	SPRING LINK FRONT
25	--
26	SHAFT LINK FRONT FDR
27	--
28	HOLDER ASSY FRONT R (with 12-18) (2150cdn Only)
	HOLDER ASSY FRONT R CN (with 12,14,16-18) (2150cn Only)
29	HOLDER ASSY FRONT L (with 17-20,22) (2150cdn Only)
	HOLDER ASSY FRONT L CN (with 17-20) (2150cn Only)
30	COVER LINK FRONT
31	PLATE NAME KM
98	KIT SHAFT PIVOT (with 23x2pcs)

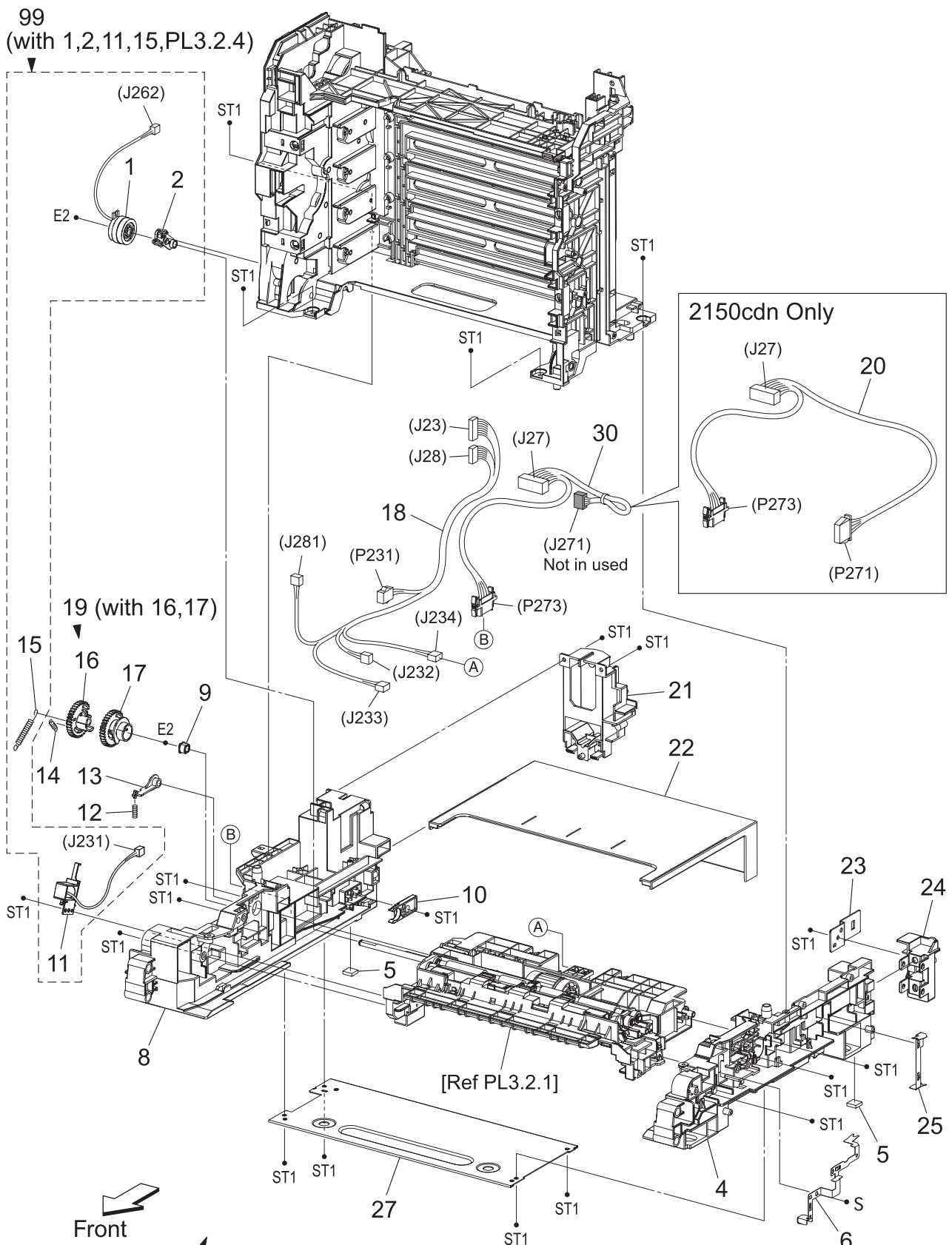
PL2.1 Paper Cassette [Illustration]



PL2.1 Paper Cassette [List]

Item	Parts name
1	CASSETTE ASSY 250 (with 19,21)
2	PLATE ASSY BOTTOM
3	SPRING N/F L
4	SPRING N/F R
5	HOLDER ASSY SEPARATOR
6	GUIDE SIDE L
7	GEAR PINION
8	GUIDE SIDE ASSY R
9	--
10	--
11	--
12	--
13	--
14	LATCH BOTTOM L
15	LATCH BOTTOM R
16	SPRING LATCH B
17	TRAY ASSY EXTENSION
18	HOUSING CASSETTE 250
19	HANDLE ASSY CST
20	PLATE LOCK KST CST
21	TRAY ASSY CST 250 (with 2-8,14-18,20)
99	KIT HOLDER ASSY SEPARATOR (with 5, Instruction)

PL3.1 Paper Feeder (1/2) [Illustration]



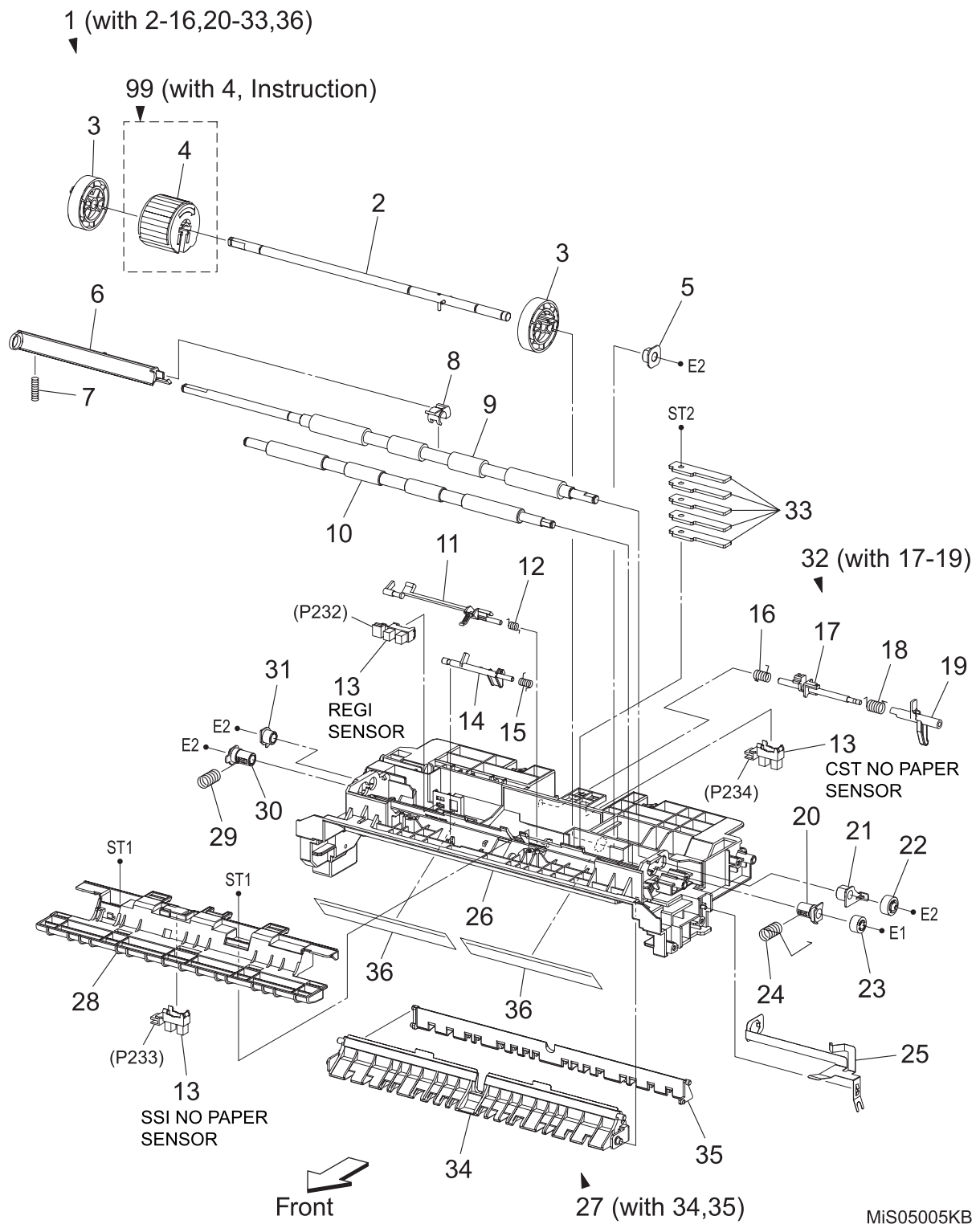
98 (with 4-6, 8-15, 18-25, 27, PL3.2.1, PL8.2.7, PL9.1.6) (2150cdn)
 (with 4-6, 8-15, 18, 19, 21-25, 27, 30, PL3.2.1, PL8.2.7, PL9.1.6) (2150cn)

MIS05004KB

PL3.1 Paper Feeder (1/2) [List]

Item	Parts name
1	CLUTCH ASSY DRV
2	BEARING REGI
3	--
4	CHASSIS FDR R
5	FOOT ASSY
6	PLATE EARTH PH
7	--
8	CHASSIS FDR L
9	BEARING
10	STOPPER CST
11	SOLENOID FEED MSI
12	SPRING LEVER
13	LEVER FEED
14	SPRING FEED IN
15	SPRING FEED OUT
16	GEAR FEED OUT
17	GEAR FEED IN
18	HARN ASSY L SIDE (J23,J28-P231,J232,J233,J234,J281)
19	GEAR ASSY FEED (with 16,17)
20	HARN ASSY OPTION (J27-P271,P273) (2150cdn Only)
21	BRACKET GFI
22	COVER CST
23	PLATE LOCK KST FDR
24	BRACKET FDR R
25	PLATE EARTH FDR R
26	--
27	PLATE TIE
28	--
29	--
30	HARNASS ASSY OPTION D-LESS MG SFP (J27-J271,P273) (2150cn Only)
98	FEEDER ASSY MG SFP DN (with 4-6,8-15,18-25,27,PL3.2.1,PL8.2.7,PL9.1.6) (2150cdn Only)
	FEEDER ASSY MG SFP N (with 4-6,8-15,18,19,21-25,27,30,PL3.2.1,PL8.2.7,PL9.1.6) (2150cn Only)
99	KIT FEED ROLL/SOL/CLUTCH (with 1,2,11,15,PL3.2.4)

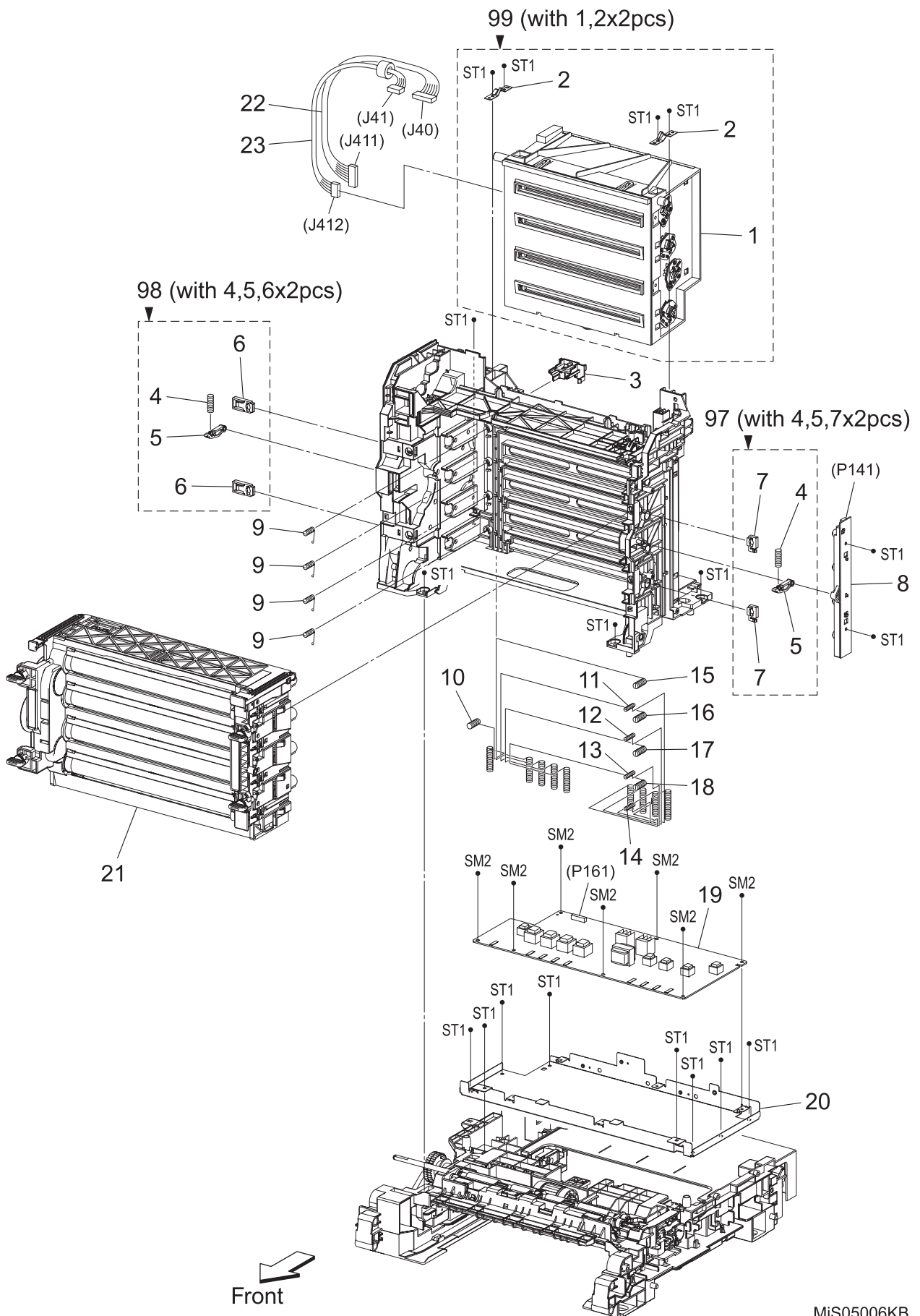
PL3.2 Paper Feeder (2/2) [Illustration]



PL3.2 Paper Feeder (2/2) [List]

Item	Parts name
1	CHUTE ASSY FDR REGI (with 2-16,20-33, 36)
2	SHAFT ASSY FEED
3	ROLL CORE MSI
4	ROLL ASSY FEED
5	BEARING EARTH
6	ACTUATOR REGI OUT
7	SPRING REGI OUT
8	ACTUATOR REGI ROLL M
9	ROLL ASSY REGI
10	ROLL REGI METAL
11	ACTUATOR REGI IN
12	SPRING ACT REGI
13	SENSOR PHOTO
14	ACTUATOR SSI
15	SPRING ACT SSI
16	SPRING STP
17	STOPPER ACT
18	SPRING ACT NP
19	ACTUATOR NO PAPER
20	BEARING M EARTH
21	BEARING EARTH REGI
22	GEAR REGI R
23	GEAR REGI M
24	SPRING REGI R MG
25	PLATE EARTH REGI
26	CHUTE UP
27	CHUTE ASSY LOW (with 34,35)
28	BRACKET SNS
29	SPRING REGI L MG
30	BEARING M
31	BEARING R
32	ACTUATOR ASSY NO PAPER (with 17-19)
33	PLATE WEIGHT
34	CHUTE ASSY LOW SSI
35	CHUTE LOW CST
36	FILM CHUTE UP
99	KIT ROLL ASSY FEED (with 4, Instruction)

PL4.1 Xerographics [Illustration]

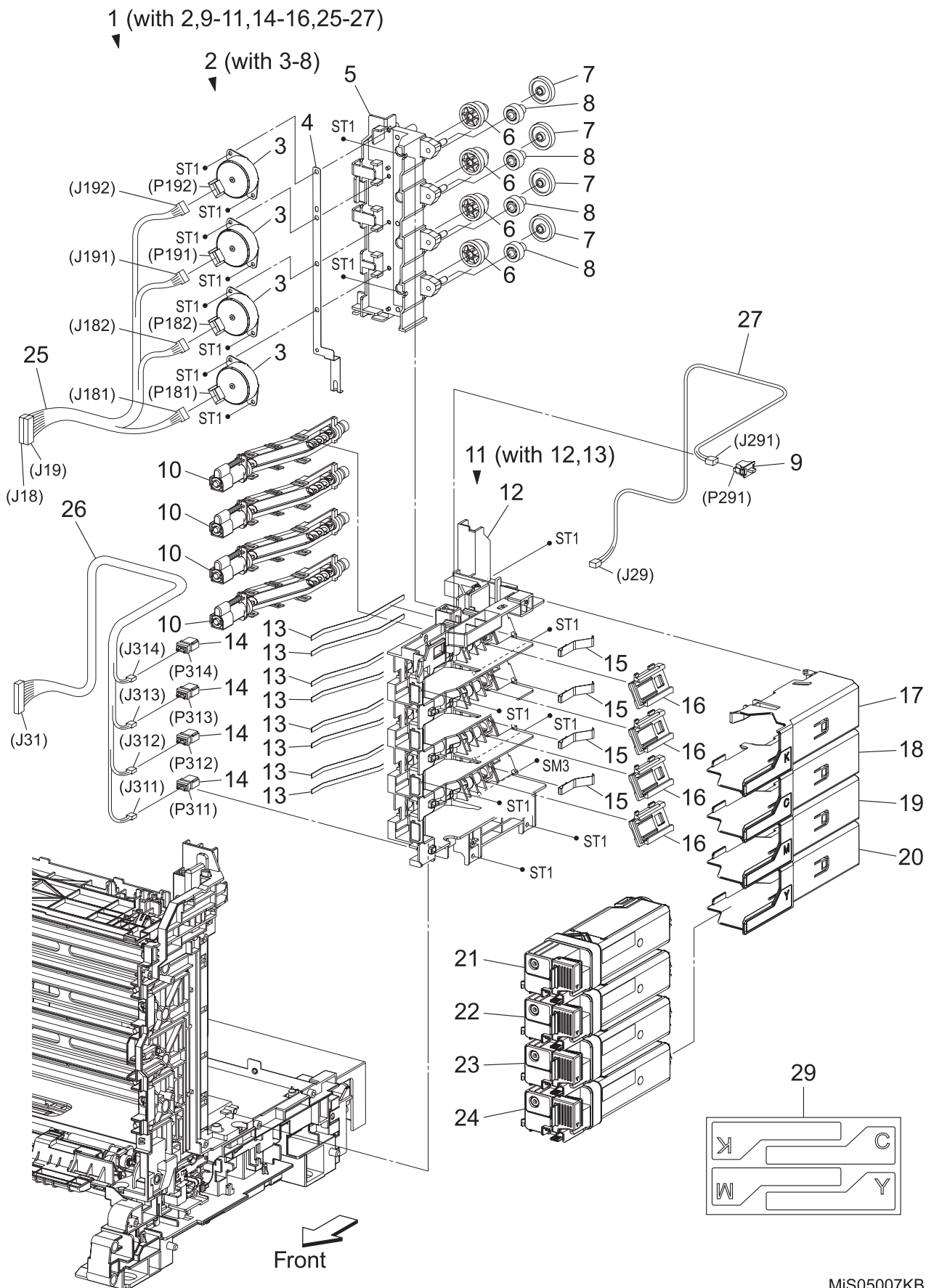


MiS05006KB

PL4.1 Xerographics [List]

Item	Parts name
1	ROS ASSY
2	SPRING ROS
3	HOLDER CRUM
4	SPRING PHD
5	LEVER PHD
6	BLOCK STOPPER PHD D
7	BLOCK STOPPER PHD AD
8	LED ASSY ERASE
9	SPRING TRACKING
10	SPRING CF
11	SPRING TR4
12	SPRING TR3
13	SPRING TR2
14	SPRING TR1
15	SPRING D4
16	SPRING D3
17	SPRING D2
18	SPRING D1
19	PWBA HVPS
20	FRAME HVPS
21	PHD ASSY
22	HARN ASSY ROS RE (J40-J411)
23	HARN ASSY ROS VIDEO (J41-J412)
97	KIT BLOCK PHD RIGHT (with 4,5,7 x 2pcs)
98	KIT BLOCK PHD LEFT (with 4,5,6 x 2pcs)
99	KIT ROS (with 1,2 x 2pcs)

PL5.1 Dispenser [Illustration]

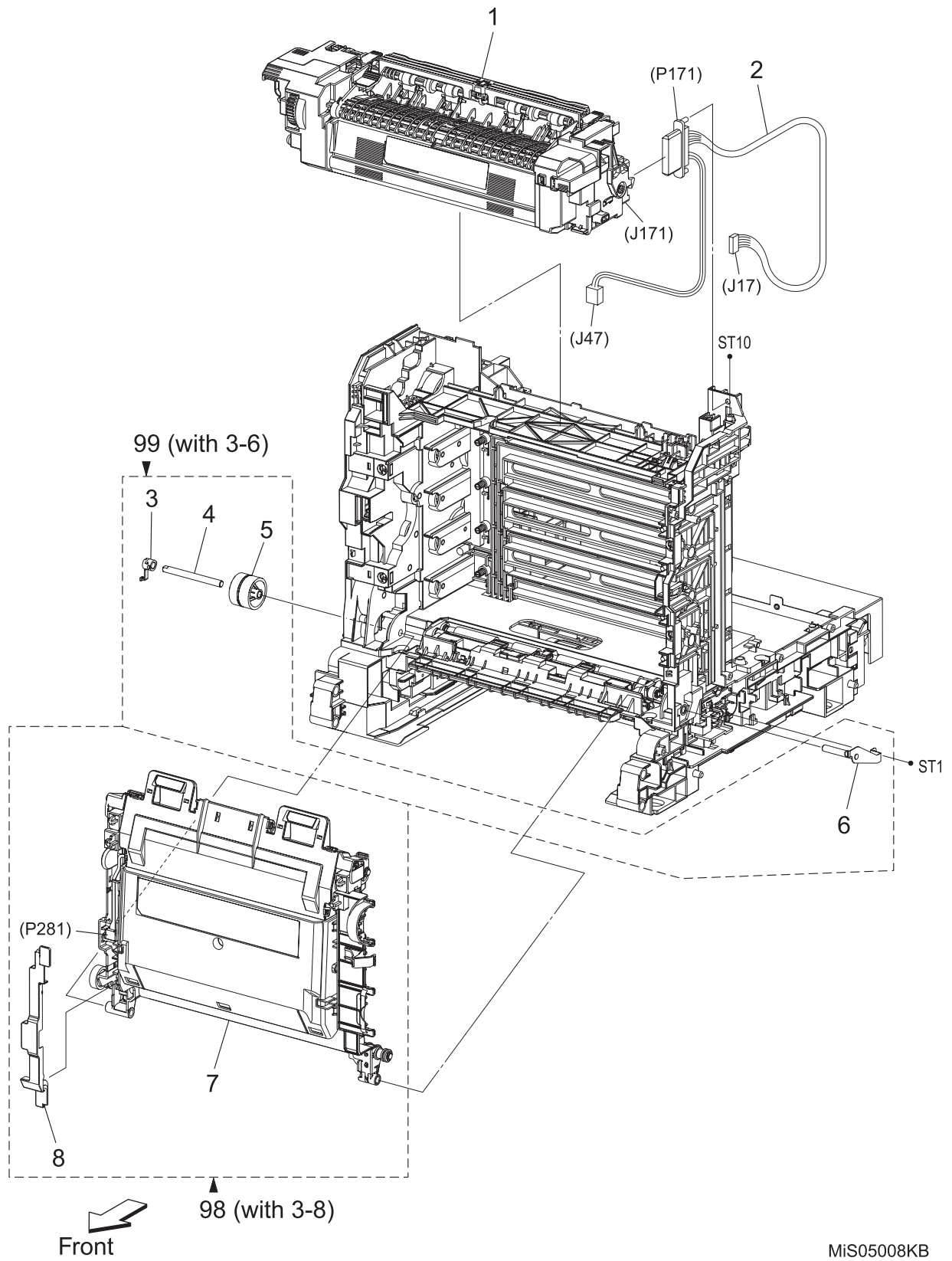


MiS05007KB

PL5.1 Dispenser [List]

Item	Parts name
1	DISPENSER ASSY (with 2,9-11,14-16,25-27)
2	FRAME ASSY MOT (with 3-8)
3	MOTOR ASSY DISP
4	CONDUCTOR MOTOR
5	FRAME MOTOR
6	GEAR IDLER
7	GEAR IDLER AUG
8	GEAR IDLER AGI
9	SWITCH
10	HOUSING ASSY AUGER
11	FRAME ASSY DISP (with 12,13)
12	FRAME DISP
13	SEAL DISP AUG
14	CONNECTOR CRUM
15	SPRING DISP
16	JOINT ASSY DISP
17	HOLDER ASSY TCRU K
18	HOLDER ASSY TCRU C
19	HOLDER ASSY TCRU M
20	HOLDER ASSY TCRU Y
21	TONER CARTRIDGE (K)
22	TONER CARTRIDGE (C)
23	TONER CARTRIDGE (M)
24	TONER CARTRIDGE (Y)
25	HARN ASSY TNR MOT (J18,J19-J181,J182,J191,J192)
26	HARN ASSY TONER CRUM (J31-J311,J312,J313,J314)
27	HARN ASSY SIDE SW (J29-J291)
28	--
29	LABEL HOLDER

PL6.1 Transfer & Fuser [Illustration]

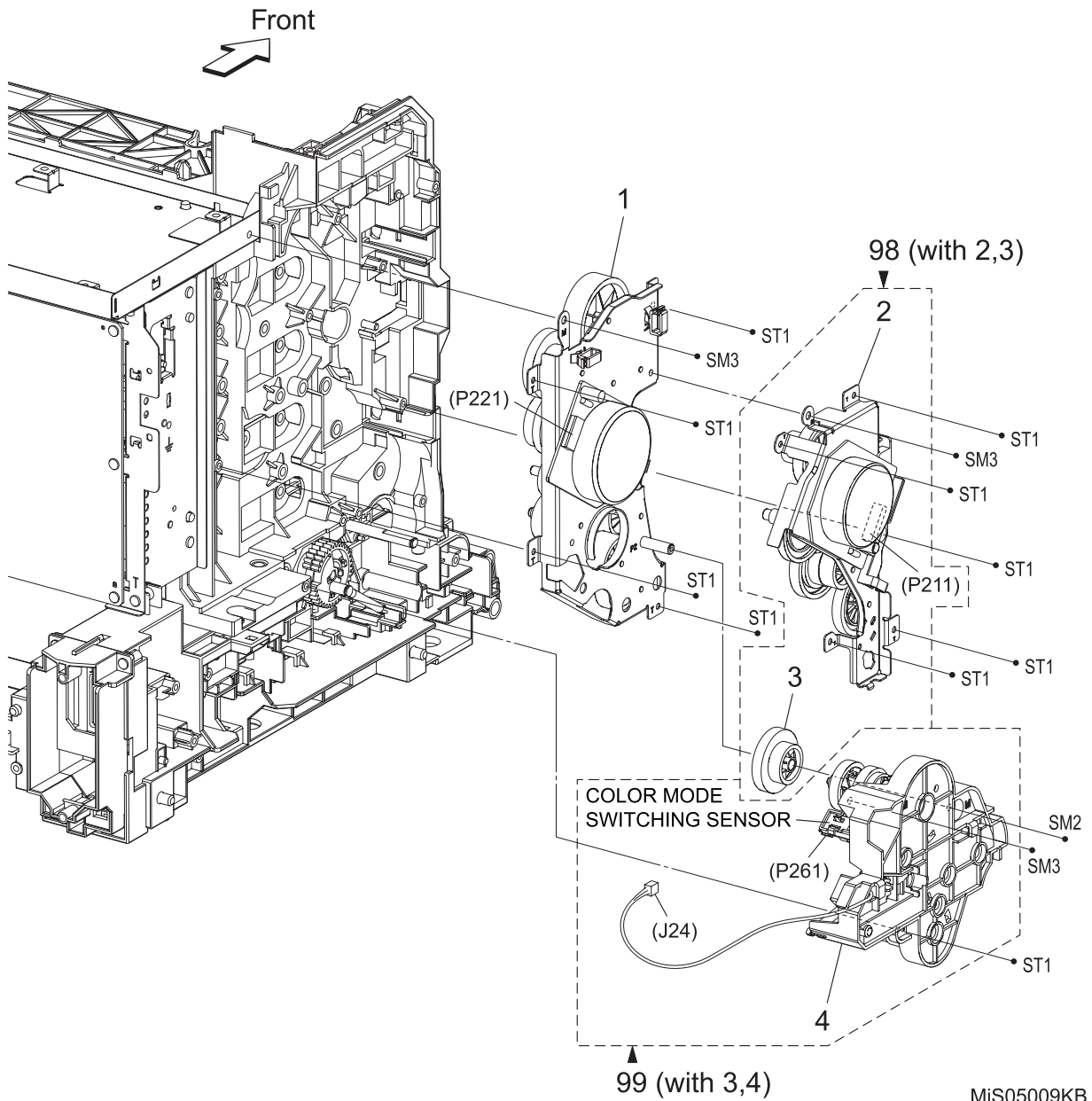


MiS05008KB

PL6.1 Transfer & Fuser [List]

Item	Parts name
1	FUSER ASSY
2	HARNESS ASSY FUSER MG SFP (J17,47-P171)
3	STOPPER PIVOT
4	PIVOT TRANS L
5	GEAR T4
6	SHAFT ASSY PIVOT
7	TRANSFER ASSY
8	COVER HARNESS
98	KIT TRANSFER ASSY (with 3-8)
99	KIT PIVOT (with 3-6)

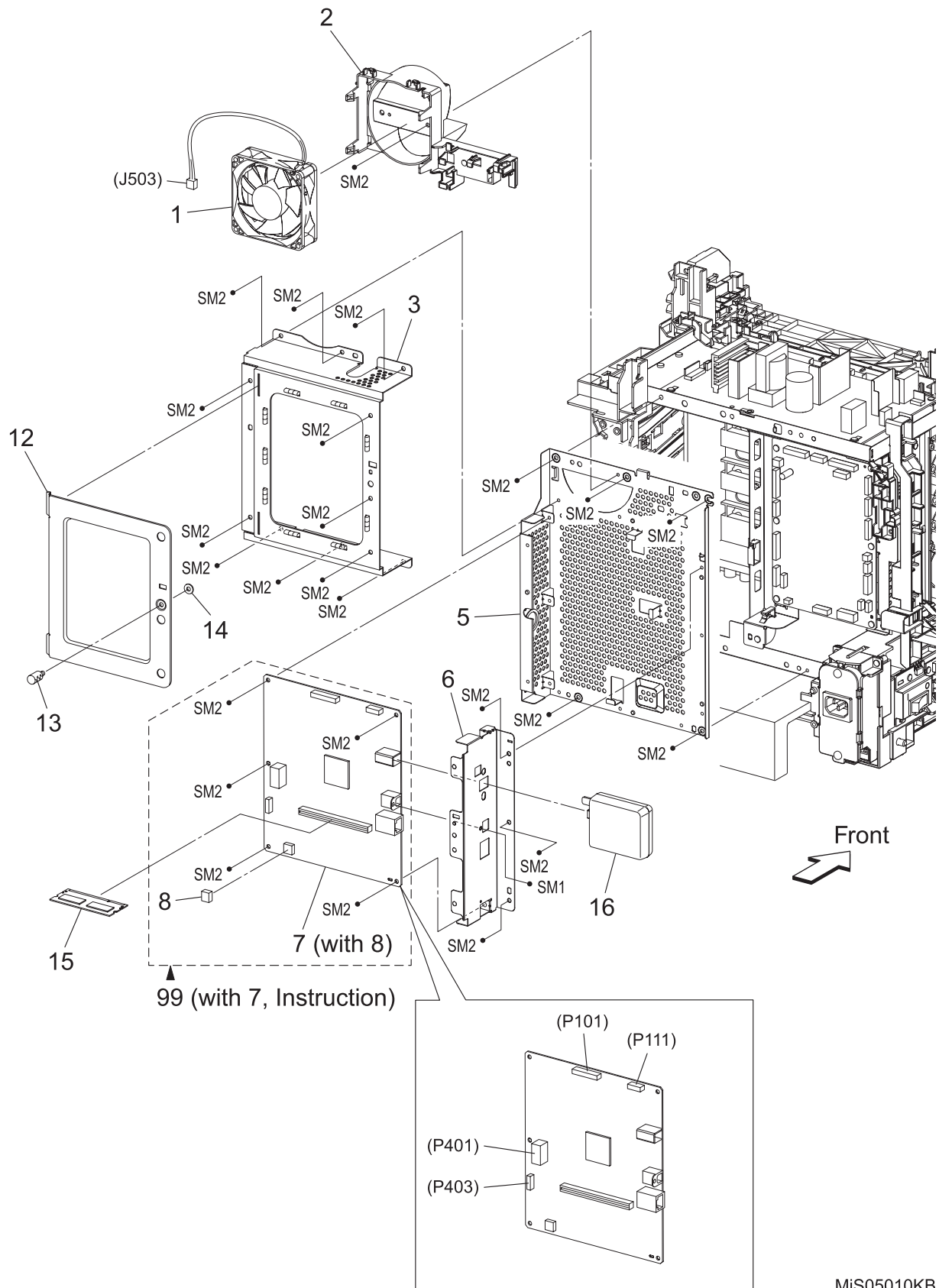
PL7.1 Drive [Illustration]



PL7.1 Drive [List]

Item	Parts name
1	DRIVE ASSY SUB
2	DRIVE ASSY MAIN
3	GEAR P2
4	DRIVE ASSY PH
98	KIT DRIVE ASSY MAIN (with 2,3)
99	KIT DRIVE ASSY PH (with 3,4)

PL8.1 Electrical (1/2) [Illustration]

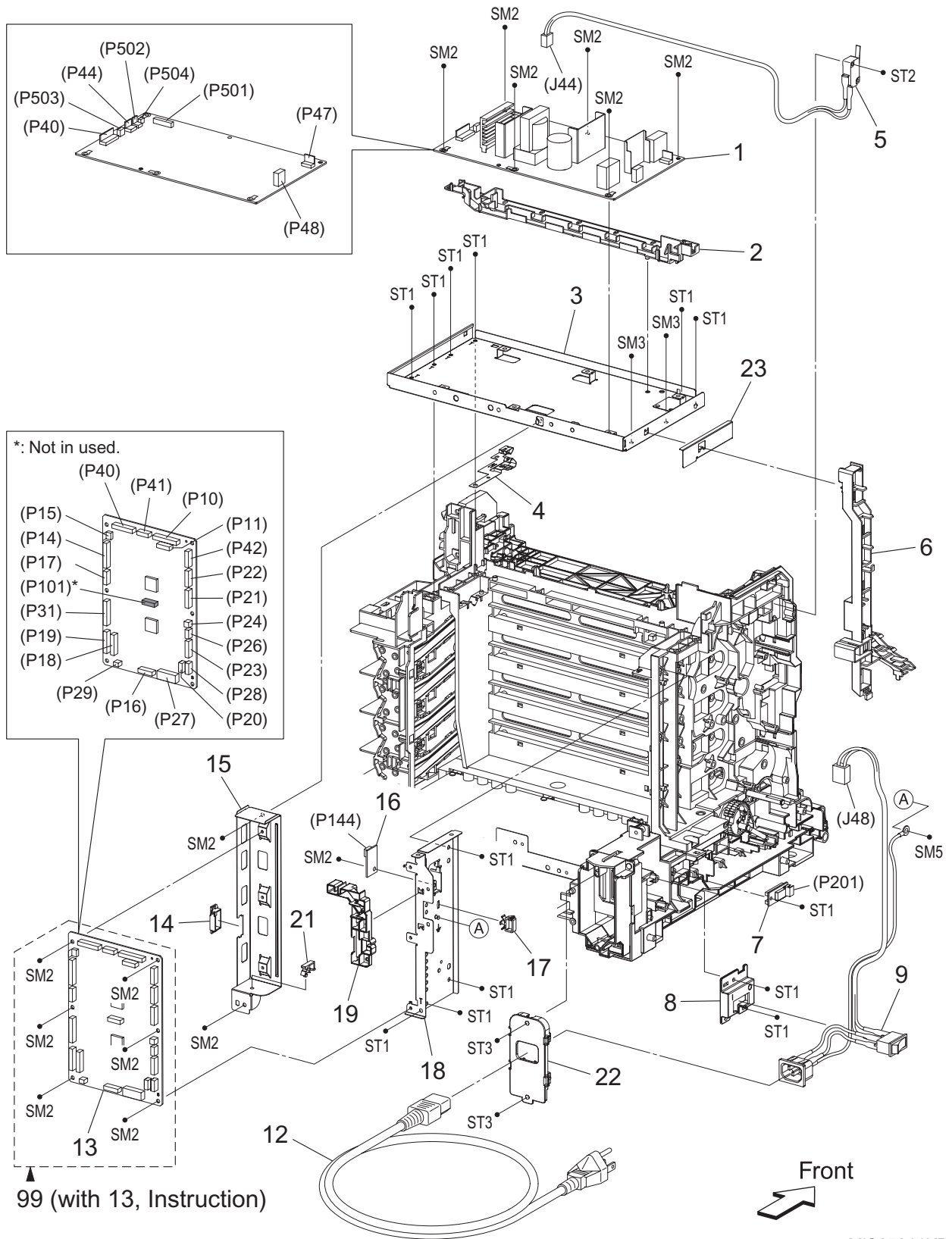


MiS05010KB

PL8.1 Electrical (1/2) [List]

Item	Parts name
1	FAN
2	DUCT FAN
3	SHIELD ASSY ESS
4	--
5	FRAME ESS
6	PLATE IF M
7	PWBA ESS SFP (with 8)
8	NVM ROM
9	--
10	--
11	--
12	PLATE ESS
13	SCREW KNURLING
14	WASHER
15	MEMORY CARD (OPTION)
16	WIRELESS ADAPTER (OPTION)
17	--
18	--
19	--
99	KIT PWBA ESS SFP (with 7, Instruction)

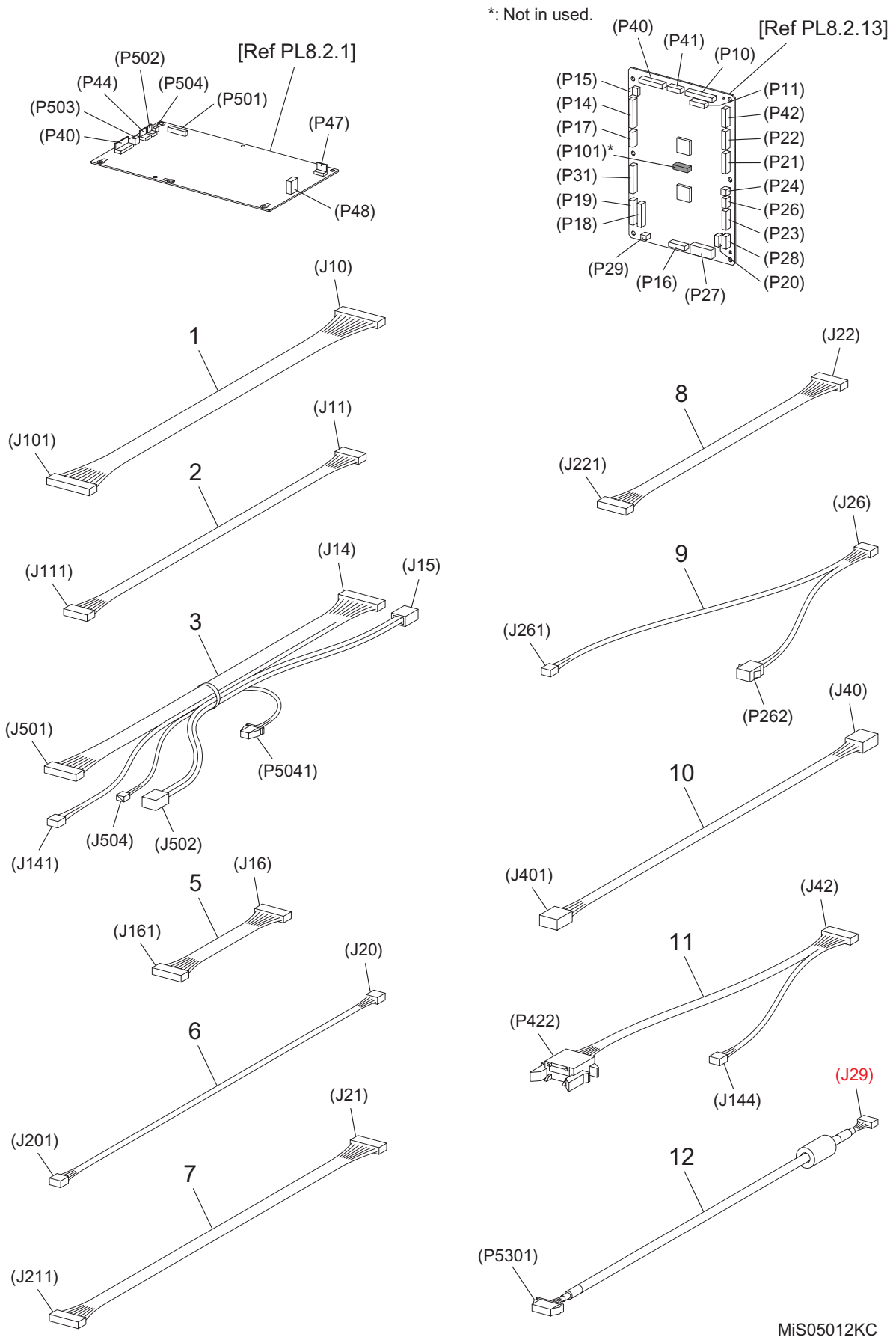
PL8.2 Electrical (2/2) [Illustration]



PL8.2 Electrical (2/2) [List]

Item	Parts name
1	PWBA LVPS
2	GUIDE HARNESS FSR
3	FRAME ASSY LVPS
4	PLATE EARTH
5	HARN ASSY INTERLOCK (SW-J44)
6	GUIDE HARNESS AC
7	SENSOR HUM
8	BRACKET SW
9	SWITCH ASSY INLET MG SFP (AC INLET-MAIN SW,J48)
10	--
11	--
12	POWER CORD
13	PWBA MCU
14	EDGING SADDLE
15	BRACKET MCU R
16	PWBA EEPROM (XPRO)
17	CLAMP
18	BRACKET MCU L
19	GUIDE HARNESS MCU
20	--
21	CLAMP MST-10V0
22	COVER INLET
23	GUIDE HARNESS FILM
99	KIT PWBA MCU (with 13, Instruction)

PL9.1 Harness [Illustration]

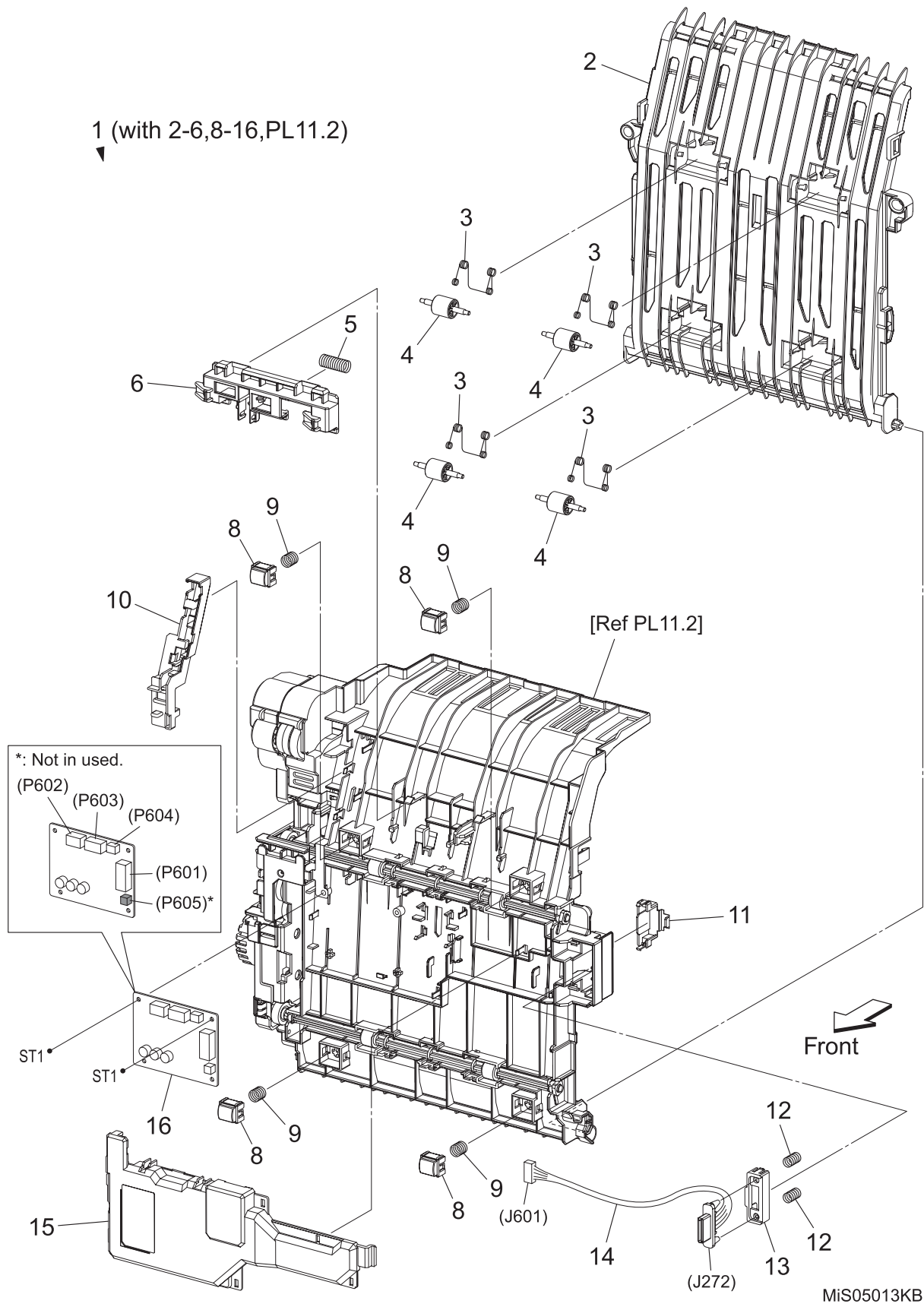


MiS05012KC

PL9.1 Harness [List]

Item	Parts name
1	HARNESS ASSY ESS MG SFP (J10-J101)
2	HARN ASSY ESS VIDEO (J11-J111)
3	HARNESS ASSY LVPS MAIN MG SFP (J14,J15,P5041-J141,J501,J502,J504)
4	--
5	HARN ASSY HVPS (J16-J161)
6	HARN ASSY HUM (J20-J201)
7	HARNESS ASSY MAIN MOT MG SFP (J21-J211)
8	HARNESS ASSY SUB MOT MG SFP (J22-J221)
9	HARN ASSY KSNR REGCL (J26-J261,P262)
10	HARN ASSY ESS POWER (J40-J401)
11	HARN ASSY PHD XPRO (J42-J144,P422)
12	HARNESS ASSY B (J29-P5301)
13	--

PL11.1 Duplex (2150cdn Only) (1/2) [Illustration]

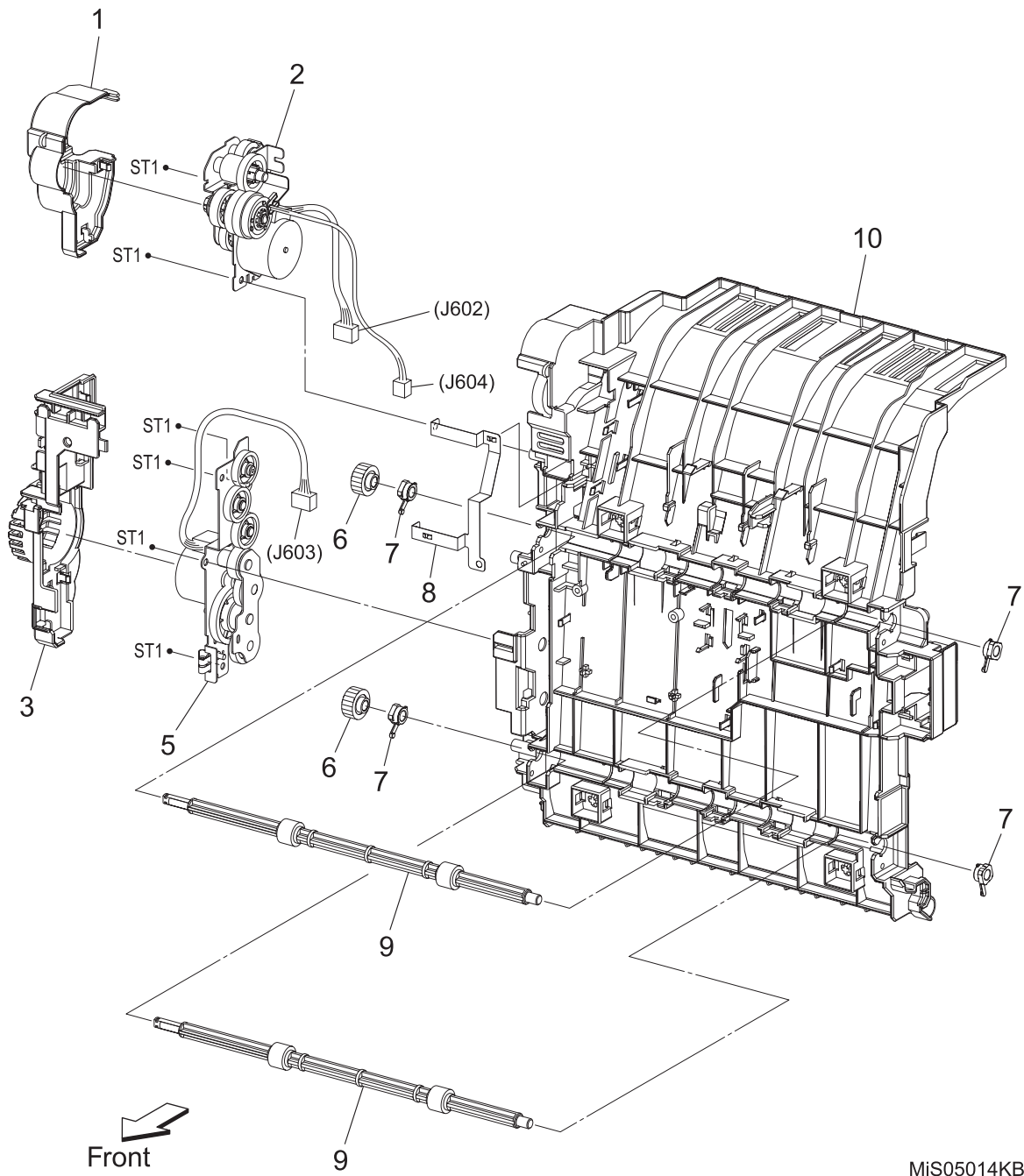


MiS05013KB

PL11.1 Duplex (2150cdn Only) (1/2) [List]

Item	Parts name
1	FEEDER ASSY DUP SFP STD (with 2-6,8-16)
2	CHUTE DUP IN
3	SPRING PINCH DUP
4	ROLL PINCH DUP
5	SPRING LATCH DUP
6	LATCH DUP
7	--
8	HOLDER CHUTE DUP
9	SPRING CHUTE DUP
10	HOLDER HARNESS DUP
11	COVER CONNECT DUP
12	SPRING CONNECT DUP
13	HOLDER CONNECT DUP
14	HARNESS ASSY DUP (J272-J601)
15	COVER PWBA DUP
16	PWBA DUP

PL11.2 Duplex (2150cdn Only) (2/2) [Illustration]

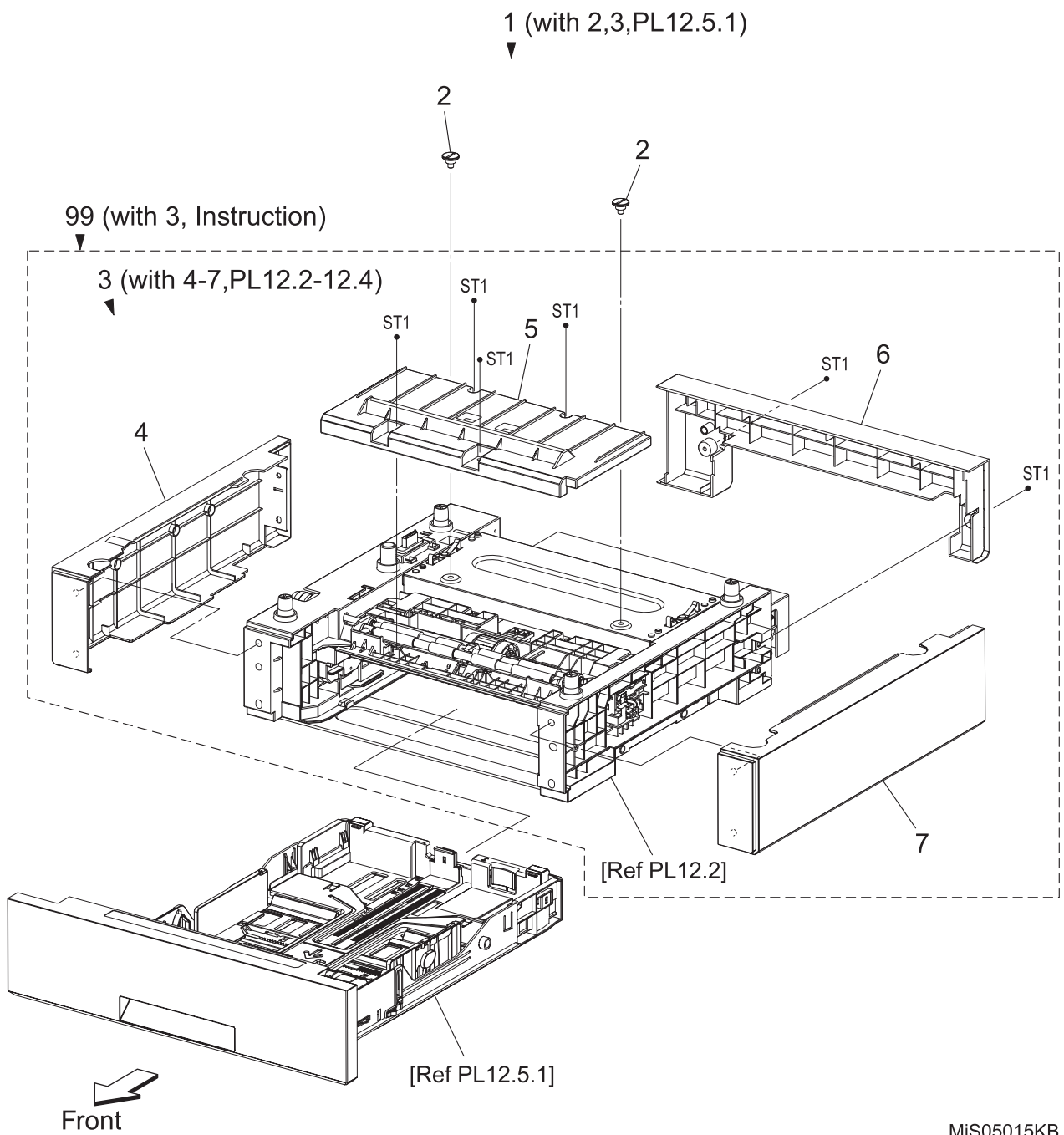


MiS05014KB

PL11.2 Duplex (2150cdn Only) (2/2) [List]

Item	Parts name
1	COVER DRIVE EXIT
2	DRIVE ASSY EXIT
3	COVER DRIVE DUP
4	--
5	DRIVE ASSY DUP
6	GEAR ROLL DUP
7	BEARING DUP
8	PLATE EARTH PWBA
9	ROLLER ASSY DUP
10	CHUTE DUP FRAME

PL12.1 250 Feeder (Option) (1/5) [Illustration]

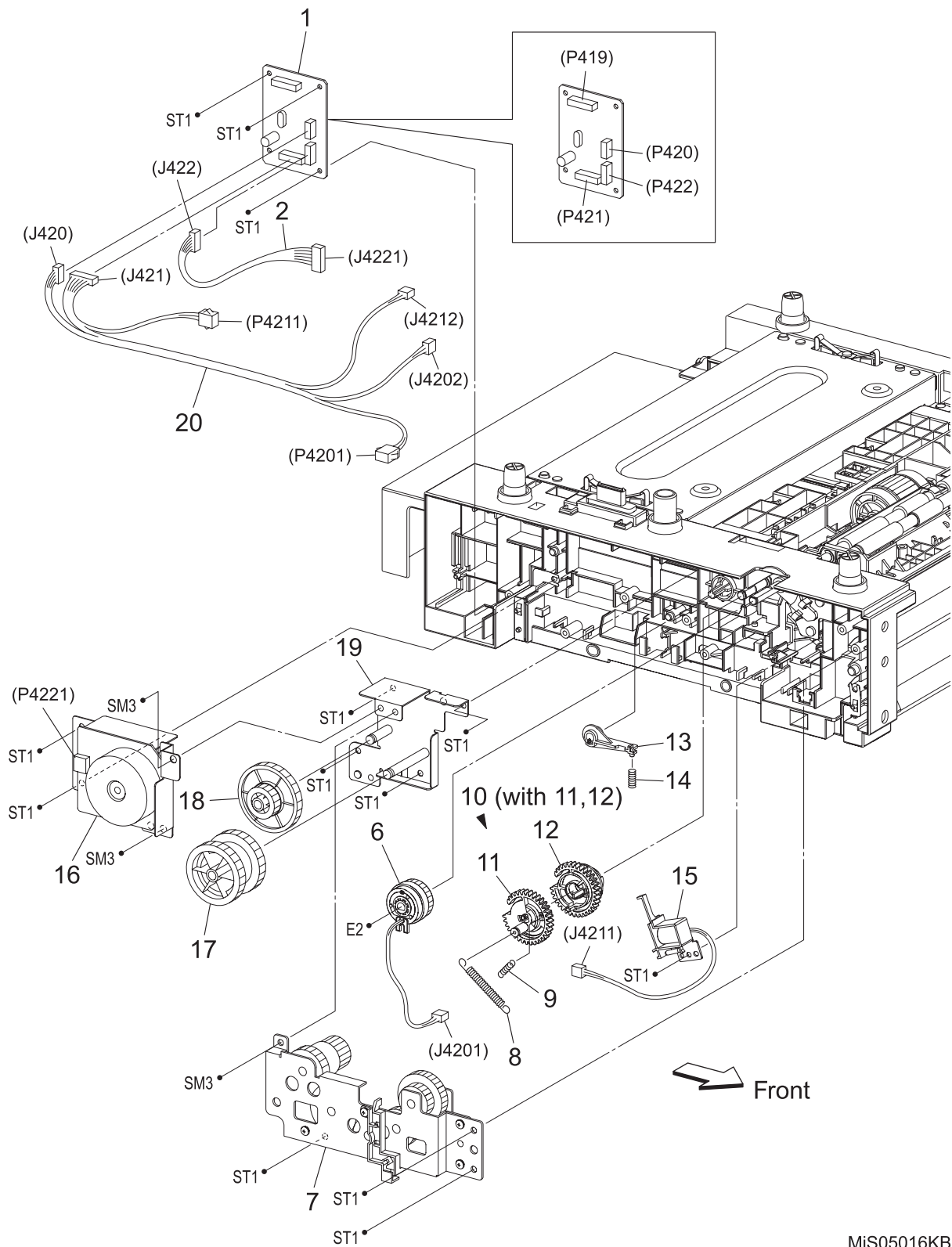


MiS05015KB

PL12.1 250 Feeder (Option) (1/5) [List]

Item	Parts name
1	250 OPTION FEEDER (with 2,3,PL12.5.1)
2	SCREW JOINT
3	FEEDER ASSY OPT (with 4-7,PL12.2-12.4)
4	COVER SIDE L OPT
5	COVER CHUTE
6	COVER REAR OPT
7	COVER SIDE R OPT
99	KIT FEEDER ASSY OPT (with 3, Instruction)

PL12.2 250 Feeder (Option) (2/5) [Illustration]

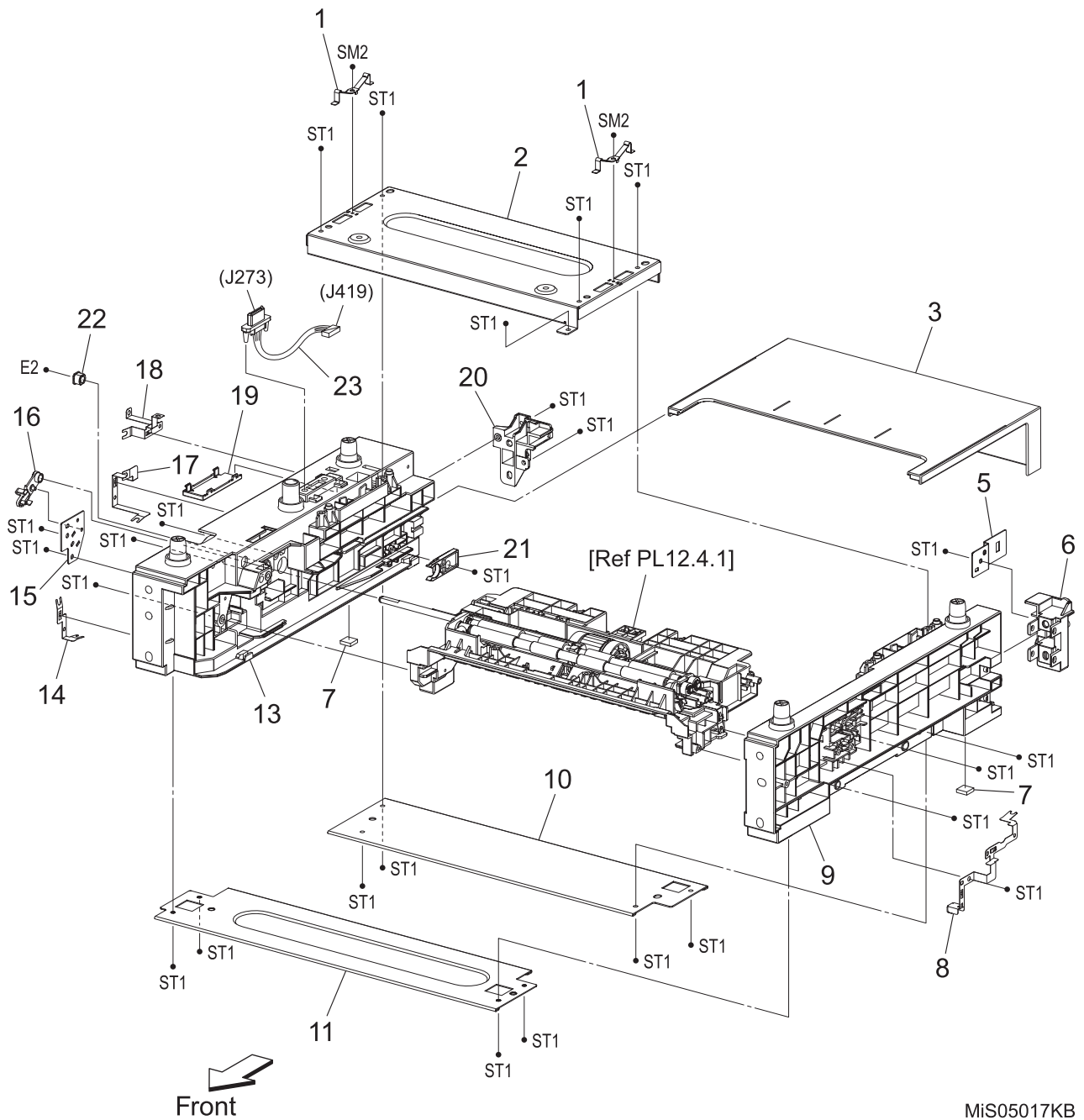


MiS05016KB

PL12.2 250 Feeder (Option) (2/5) [List]

Item	Parts name
1	PWBA FEED H
2	HARNESS ASSY TRAY MOT (J422-J4221)
3	--
4	--
5	--
6	CLUTCH ASSY DRV [Same as PL3.1.1]
7	GEAR ASSY IDLER
8	SPRING FEED OUT [Same as PL3.1.15]
9	SPRING FEED IN [Same as PL3.1.14]
10	GEAR ASSY FEED (with 11,12) [Same as PL3.1.19]
11	GEAR FEED OUT [Same as PL3.1.16]
12	GEAR FEED IN [Same as PL3.1.17]
13	LEVER FEED [Same as PL3.1.13]
14	SPRING LEVER [Same as PL3.1.12]
15	SOLENOID FEED MSI [Same as PL3.1.11]
16	MOTOR ASSY SUB
17	GEAR IDLE 40Z
18	GEAR IDLE 86-20Z
19	PLATE ASSY IDLE 1
20	HARNESS ASSY TRAY COMP (J420,J421-P4201,J4202,P4211,J4212)

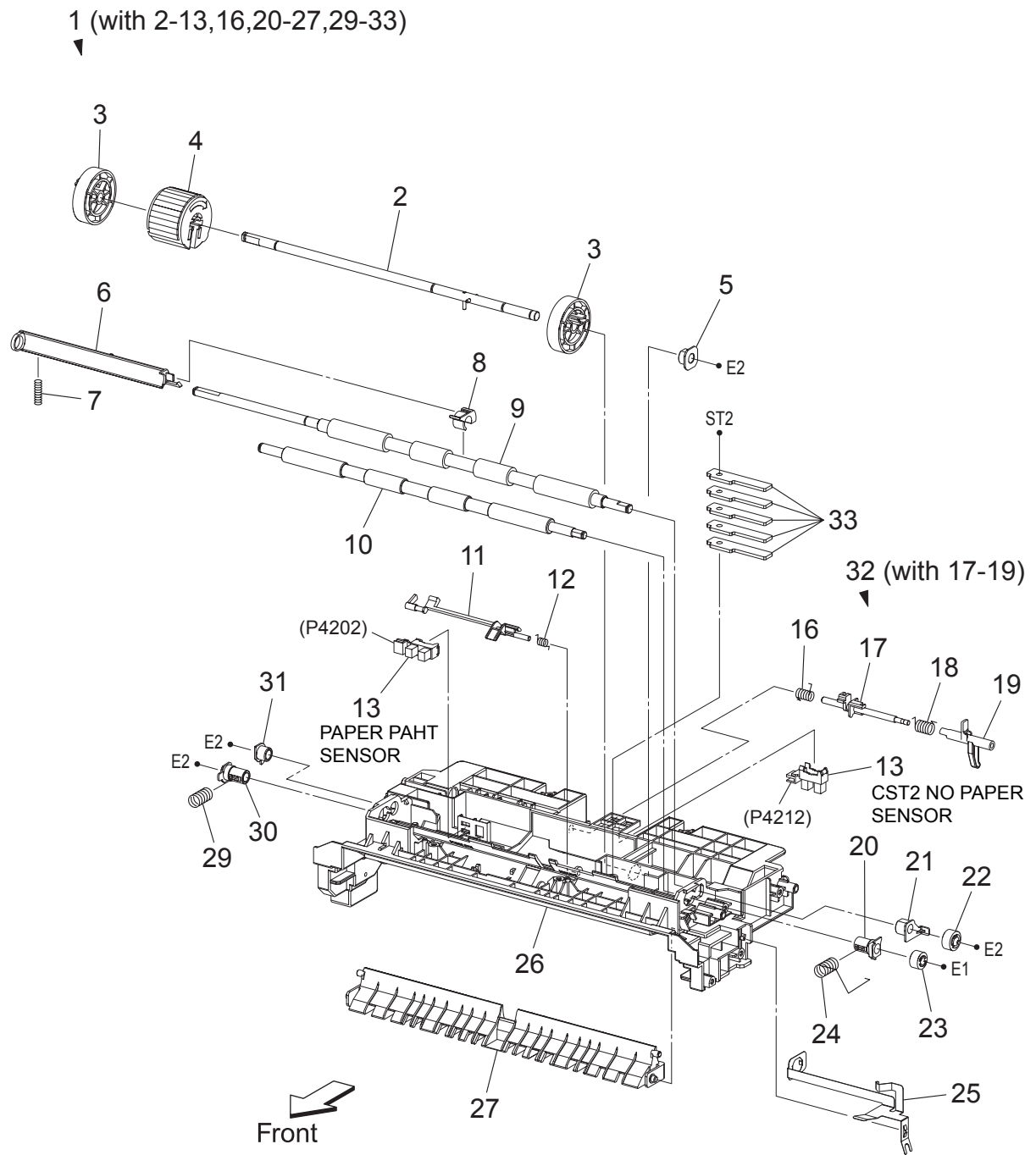
PL12.3 250 Feeder (Option) (3/5) [Illustration]



PL12.3 250 Feeder (Option) (3/5) [List]

Item	Parts name
1	SPRING EARTH OPT
2	PLATE REAR TOP
3	COVER CST [Same as PL3.1.22]
4	--
5	PLATE LOCK KST FDR [Same as PL3.1.23]
6	BRACKET FDR R [Same as PL3.1.24]
7	FOOT ASSY [Same as PL3.1.5]
8	PLATE EARTH PH [Same as PL3.1.6]
9	CHASSIS FDR R OPT
10	PLATE REAR BOTTOM
11	PLATE FRONT BOTTOM
12	--
13	CHASSIS FDR L OPT
14	PLATE EARTH FRONT BOTTOM
15	BRACKET SUP REGI
16	BEARING REGI [Same as PL3.1.2]
17	PLATE EARTH REAR BOTTOM
18	PLATE EARTH REAR TOP
19	COVER HARNESS DRAWER
20	BRACKET CVR REAR
21	STOPPER CST [Same as PL3.1.10]
22	BEARING [Same as PL3.1.9]
23	HARNESS ASSY TRAY (J273-J419)

PL12.4 250 Feeder (Option) (4/5) [Illustration]

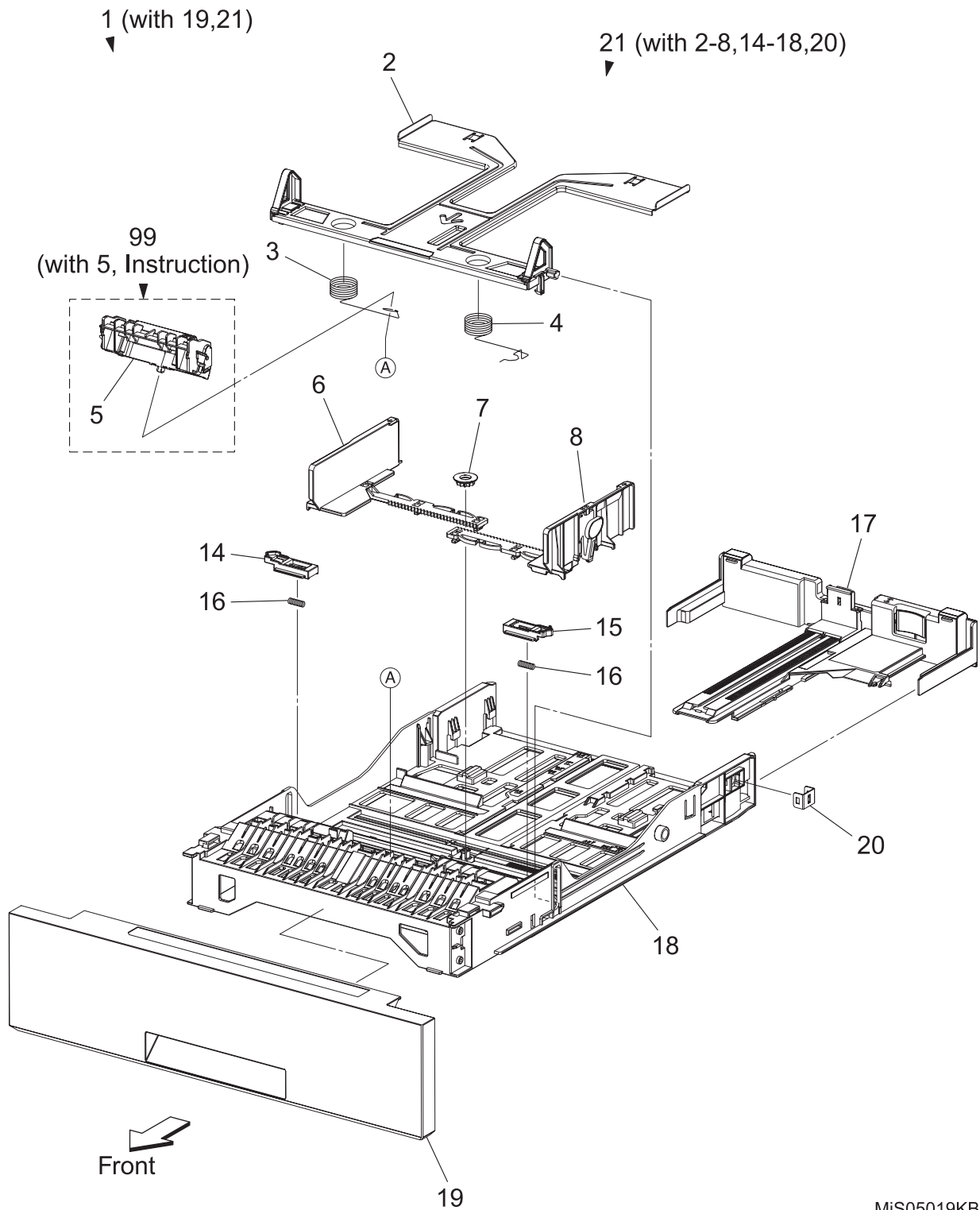


MiS05018KB

PL12.4 250 Feeder (Option) (4/5) [List]

Item	Parts name
1	CHUTE ASSY TURN (with 2-13,16,20-27,29-33)
2	SHAFT ASSY FEED [Same as PL3.2.2]
3	ROLL CORE MSI [Same as PL3.2.3]
4	ROLL ASSY FEED [Same as PL3.2.4]
5	BEARING EARTH [Same as PL3.2.5]
6	ACTUATOR REGI OUT [Same as PL3.2.6]
7	SPRING REGI OUT [Same as PL3.2.7]
8	ACTUATOR REGI ROLL
9	ROLL ASSY REGI
10	ROLL REGI METAL [Same as PL3.2.10]
11	ACTUATOR REGI IN
12	SPRING ACT REGI [Same as PL3.2.12]
13	SENSOR PHOTO [Same as PL3.2.13]
14	--
15	--
16	SPRING STP [Same as PL3.2.16]
17	STOPPER ACT [Same as PL3.2.17]
18	SPRING ACT NP [Same as PL3.2.18]
19	ACTUATOR NO PAPER [Same as PL3.2.19]
20	BEARING M EARTH [Same as PL3.2.20]
21	BEARING EARTH REGI [Same as PL3.2.21]
22	GEAR REGI R [Same as PL3.2.22]
23	GEAR REGI M [Same as PL3.2.23]
24	SPRING REGI R M
25	PLATE EARTH REGI [Same as PL3.2.25]
26	CHUTE UP [Same as PL3.2.26]
27	CHUTE LOW
28	--
29	SPRING REGI L M
30	BEARING M [Same as PL3.2.30]
31	BEARING R [Same as PL3.2.31]
32	ACTUATOR ASSY NO PAPER (with 17-19) [Same as PL3.2.32]
33	PLATE WEIGHT [Same as PL3.2.33]

PL12.5 250 Feeder (Option) (5/5) [Illustration]



MiS05019KB

PL12.5 250 Feeder (Option) (5/5) [List]

Item	Parts name
1	CASSETTE ASSY 250 OPT (with 19,21)
2	PLATE ASSY BOTTOM [Same as PL2.1.2]
3	SPRING N/F L [Same as PL2.1.3]
4	SPRING N/F R [Same as PL2.1.4]
5	HOLDER ASSY SEPARATOR [Same as PL2.1.5]
6	GUIDE SIDE L [Same as PL2.1.6]
7	GEAR PINION [Same as PL2.1.7]
8	GUIDE SIDE ASSY R [Same as PL2.1.8]
9	--
10	--
11	--
12	--
13	--
14	LATCH BOTTOM L [Same as PL2.1.14]
15	LATCH BOTTOM R [Same as PL2.1.15]
16	SPRING LATCH B [Same as PL2.1.16]
17	TRAY ASSY EXTENSION [Same as PL2.1.17]
18	HOUSING CASSETTE 250 [Same as PL2.1.18]
19	HANDLE ASSY CST OPT
20	PLATE LOCK KST CST [Same as PL2.1.20]
21	TRAY ASSY CST 250 (with 2-8,14-18,20) [Same as PL2.1.21]
99	KIT HOLDER ASSY SEPARATOR (with 5, Instruction)