
STDF-3

———— CONTENTS ————

FIG.1 HOUSING	2
FIG.2 PAPER FEED COVER	4
FIG.3 PAPER TAKE-UP SECTION	6
• INDEX	8

FIG. 1 HOUSING

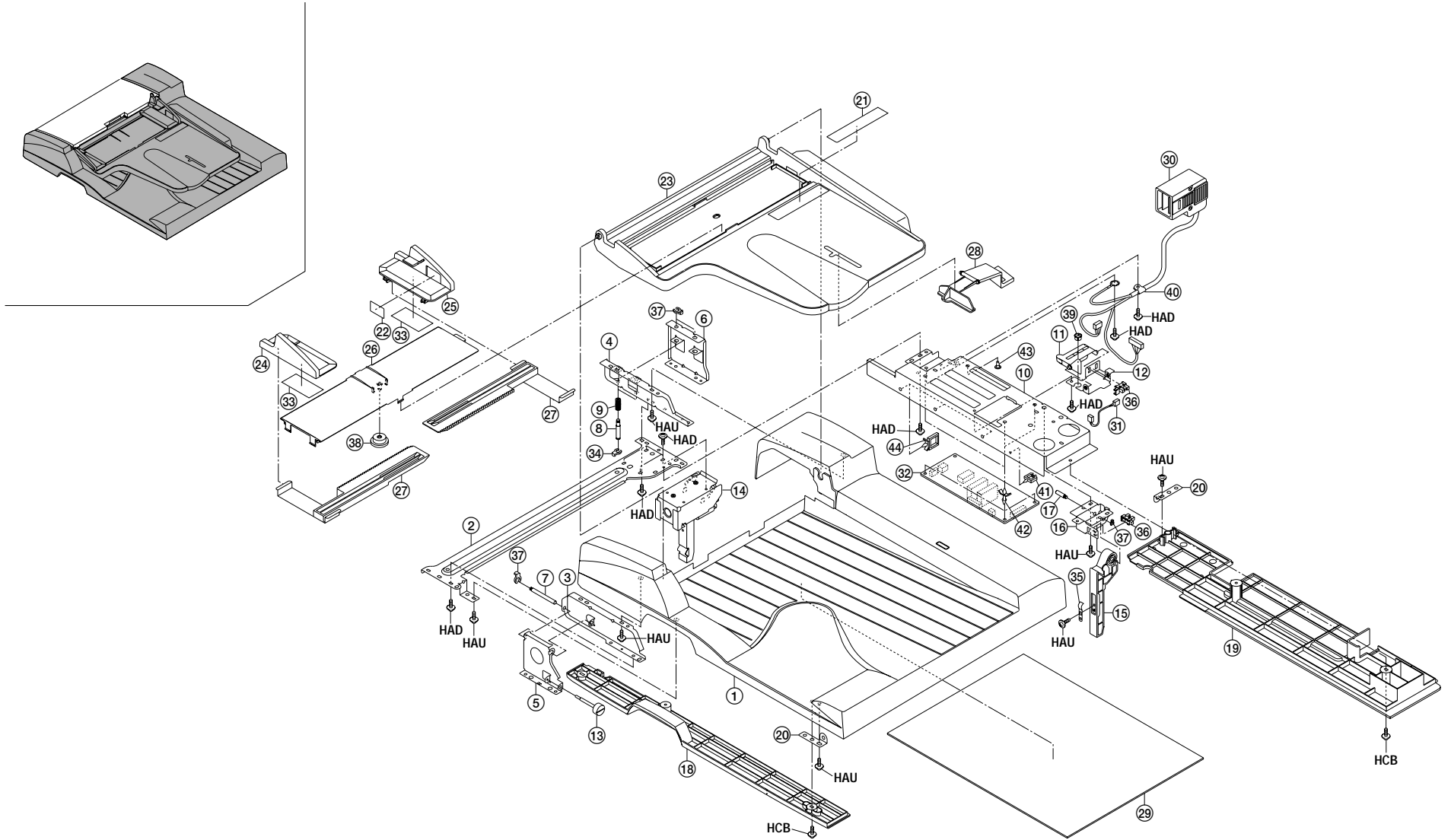


FIG. 1 HOUSING

3A7

SP	Ref. No.	Part. No.	Description	Quantity		
				120V	230V	240V
●	1	3A702010	BASE,ADF	1	1	1
	2	3A702050	STAY,BASE	1	1	1
	3	3A702060	FRONT RETAINER,BASE	1	1	1
	4	3A702070	REAR RETAINER,BASE	1	1	1
	5	3A702080	FRONT WORK PLATE,BASE	1	1	1
	6	3A702090	REAR WORK PLATE,BASE	1	1	1
	7	3A702100	FRONT SHAFT,RETAINER BASE	1	1	1
	8	3A702110	REAR SHAFT,RETAINER BASE	2	2	2
	9	3A702120	SPRING,PAPER FEED	2	2	2
	10	3A702140	MOUNT,PCB DRIVER	1	1	1
●	11	3A702150	ACTUATOR,ORIGINAL DETECTION	1	1	1
	12	3A702190	MOUNT,ORIGINAL DETECTION	1	1	1
	13	3A702200	RETAINING PIN,PAPER FEED	1	1	1
	14	3A703010	LEFT HINGE	1	1	1
	15	3A703020	RIGHT STAY,HINGE	1	1	1
	16	3A703030	RETAINER,HINGE	1	1	1
	17	3A703040	FULCRUM PIN,HINGE	1	1	1
●	18	3A704010	LOWER FRONT COVER	1	1	1
●	19	3A704020	LOWER REAR COVER	1	1	1
	20	3A704040	FRONT MOUNT,COVER	2	2	2
	21	3A705020	LABEL,ORIGINAL SIZE(METRIC)		1	1
	21	3A705030	LABEL,ORIGINAL SIZE(INCH)	1		
	22	3A705040	LABEL,ORIGINAL CURSOR(METRIC)		1	1
	22	3A705050	LABEL,ORIGINAL CURSOR(INCH)	1		
●	23	3A706010	TABLE,ORIGINAL	1	1	1
●	24	3A706020	FRONT CURSOR,ORIGINAL TABLE	1	1	1
●	25	3A706030	REAR CURSOR,ORIGINAL TABLE	1	1	1
●	26	3A706040	COVER,ORIGINAL TABLE	1	1	1
	27	3A706050	RACK,ORIGINAL TABLE	2	2	2
	28	3A706060	ACTUATOR,ORIGINAL TABLE	1	1	1
●	29	3A708060	MAT,ORIGINAL HOLDER	1	1	1
	30	3A727030	WIRE,INTERFACE	1	1	1
	31	3A727040	JUNCTION WIRING,SIZE DETECTION	1	1	1
●	32	3A728010	DRIVER PCB	1	1	1
	33	3AL06090	CUSHION,ORIGINAL GUIDE	2	2	2
	34	34806150	STOPPER 5	2	2	2
	35	34920190	GROUND PLATE,FIXING UNIT	1	1	1
●	36	35327400	SWITCH,FEED	2	2	2
	37	63511220	STOP RING,4	4	4	4
	38	65907210	GEAR 20,CASSETTE	1	1	1

SP	Ref. No.	Part. No.	Description	Quantity		
				120V	230V	240V
	39	M1203200	OPEN BUSHING,OCB-375	1	1	1
	40	M2105040	NYLON CLAMP 6N,NK-6N	1	1	1
	41	M2105720	MINIATURE CLAMP,UAMS-05-2	1	1	1
	42	M2108000	SPACER,KGLS-3S	3	3	3
	43	M2108080	SPACER,KGPS-3S	1	1	1
	44	M2109050	LOCKING WIRE SADDLE,LWS-2Y	3	3	3

- Parts with "●" are component parts or sub-assemblies of the assembly appearing immediately above them.
- Parts with "●" indicates the Service parts.

FIG. 2 PAPER FEED COVER

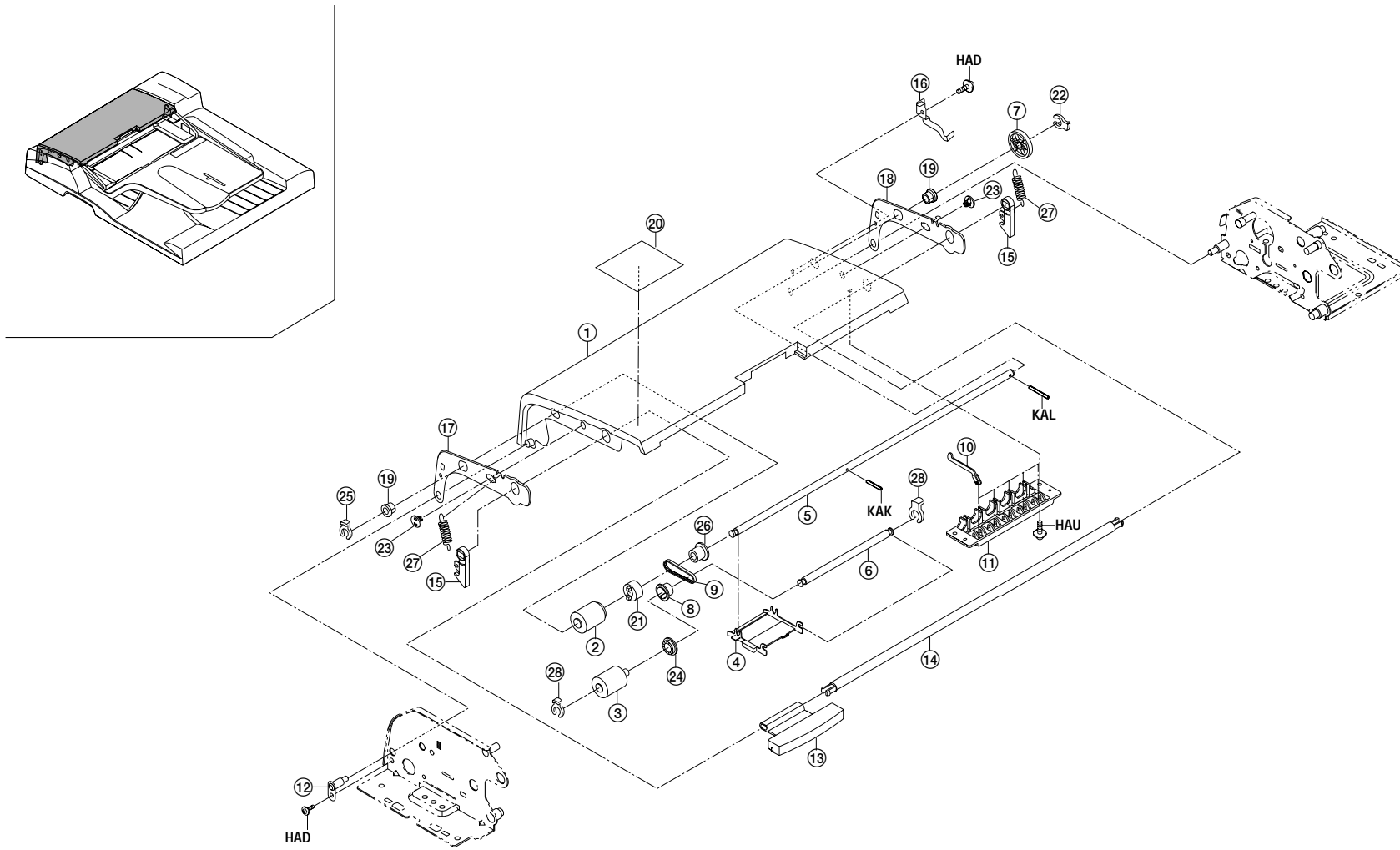


FIG. 2 PAPER FEED COVER

3A7

SP	Ref. No.	Part. No.	Description	Quantity		
				120V	230V	240V
●	1	3A707010	COVER,PAPER FEED	1	1	1
●	2	3A707020	PULLEY,PAPER FEED	1	1	1
●	3	3A707030	PULLEY,LEADING FEED	1	1	1
	4	3A707040	GUIDE,PAPER FEED PULLEY	1	1	1
	5	3A707050	SHAFT,PAPER FEED	1	1	1
	6	3A707060	SHAFT,LEADING FEED	1	1	1
	7	3A707110	GEAR 30,PAPER FEED	1	1	1
	8	3A707120	PULLEY,LEADING FEED	1	1	1
	9	3A707130	BELT,LEADING FEED	1	1	1
●	10	3A707140	ACTUATOR,SIZE DETECTION	5	5	5
	11	3A707150	MOUNT,ACTUATOR	1	1	1
	12	3A707160	RETAINING PIN,PAPER FEED COVER	1	1	1
	13	3A707220	HANDLE,RELEASE	1	1	1
	14	3A707230	SHAFT,RELEASE	1	1	1
	15	3A707240	HOOK,RELEASE	2	2	2
	16	3A707250	STOPPER,PAPER FEED	1	1	1
	17	3A707260	FRONT SUPPORT PLATE,PAPER FEED	1	1	1
	18	3A707270	REAR SUPPORT PLATE,PAPER FEED	1	1	1
	19	29806810	BUSHING,6 REGISTRATION	2	2	2
	20	3AL05120	LABEL,DF ORIGINAL CAUTION	1	1	1
	21	3BC07130	ONE-WAY CLUTCH 6	1	1	1
	22	34806150	STOPPER 5	1	1	1
	23	34907070	PIN,CLAW CASSETTE	2	2	2
	24	36211500	GEAR,LEADING FEED JOINT	1	1	1
	25	63511220	STOP RING,4	1	1	1
	26	68721640	PULLEY 20,DUPLEX CONVEYING	1	1	1
	27	72118141	SPRING,CLEANING BLADE	2	2	2
	28	78620710	CLAW STOPPER	2	2	2

- Parts with "●" are component parts or sub-assemblies of the assembly appearing immediately above them.
- Parts with "●" indicates the Service parts.

FIG. 3 PAPER TAKE-UP SECTION

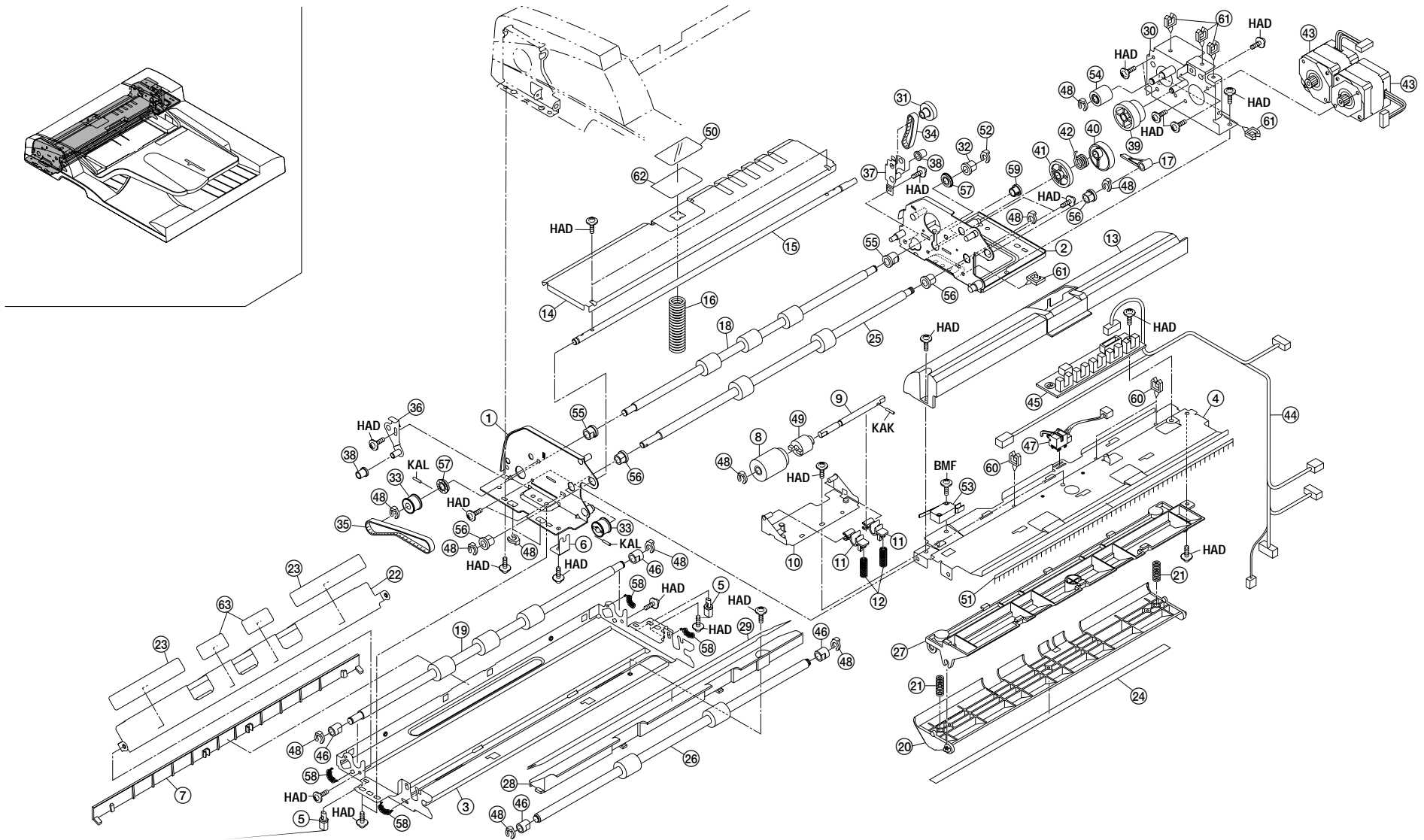


FIG. 3 PAPER TAKE-UP SECTION

3A7

SP	Ref. No.	Part. No.	Description	Quantity		
				120V	230V	240V
	1	3A702020	FRONT FRAME	1	1	1
	2	3A702030	REAR FRAME	1	1	1
	3	3A702040	MOUNT BASE,CONVEYING	1	1	1
	4	3A702130	REINFORCEMENT,ADF	1	1	1
	5	3A702180	CUSHION,ADF	2	2	2
	6	3A702210	ADJUSTING PLATE,PAPER FEED	1	1	1
●	7	3A704030	LOWER COVER,PAPER FEED	1	1	1
●	8	3A707020	PULLEY,PAPER FEED	1	1	1
	9	3A707070	SHAFT,SEPARATION	1	1	1
	10	3A707080	MOUNT,SEPARATION PULLEY	1	1	1
	11	3A707090	HOLDER,SEPARATION PULLEY	2	2	2
	12	3A707100	SPRING,SEPARATION PULLEY	2	2	2
	13	3A707170	GUIDE,PAPER FEED	1	1	1
	14	3A707181	GUIDE,LIFT	1	1	1
	15	3A707190	SHAFT,LIFT	1	1	1
	16	3A707200	SPRING,LIFT	1	1	1
	17	3A707210	LEVER,LIFT	1	1	1
●	18	3A708010	UPPER ROLLER,REGISTRATION	1	1	1
	19	3A708020	LOWER ROLLER,REGISTRATION	1	1	1
	20	3A708030	GUIDE,READING	1	1	1
	21	3A708040	SPRING,READING	2	2	2
	22	3A708050	GUIDE,CONVEYING	1	1	1
	23	3A708070	FILM,CONVEYING	2	2	2
●	24	3A708080	SHEET,READING	1	1	1
●	25	3A710010	UPPER ROLLER,EJECT	1	1	1
	26	3A710020	LOWER ROLLER,EJECT	1	1	1
	27	3A710030	UPPER GUIDE,EJECT	1	1	1
	28	3A710040	LOWER GUIDE,EJECT	1	1	1
	29	3A710050	FILM,EJECT	1	1	1
	30	3A722010	MOUNT,MOTOR	1	1	1
	31	3A722020	GEAR Z45/B16,IDLE	1	1	1
	32	3A722030	PULLEY 19,REGISTRATION	1	1	1
	33	3A722040	PULLEY 24,CONVEYING	2	2	2
	34	3A722050	BELT 92,CONVEYING	1	1	1
	35	3A722060	BELT 190,CONVEYING	1	1	1
	36	3A722070	TENSION PLATE,EJECT	1	1	1
	37	3A722080	TENSION PLATE,CONVEYING	1	1	1
	38	3A722090	PULLEY,DRIVE	2	2	2
	39	3A722100	GEAR 42/29	1	1	1
	40	3A722110	CAM,LIFT	1	1	1

SP	Ref. No.	Part. No.	Description	Quantity		
				120V	230V	240V
	41	3A722120	GEAR 38,LIFT	1	1	1
	42	3A722130	SQUARE SPRING,CAM	1	1	1
●	43	3A727010	MOTOR,PAPER FEED	2	2	2
	44	3A727020	WIRE,PAPER FEED	1	1	1
●	45	3A728020	ADF SIZE DETECTION PCB	1	1	1
	46	49027300	BUSHING 6	4	4	4
●	47	3AL27060	SWITCH,FEED	1	1	1
	48	34806150	STOPPER 5	12	12	12
	49	36706900	TORQUE LIMITER,PAPER FEED	1	1	1
	50	3A707290	PAD,LIFT	1	1	1
	51	63212210	STATIC ELIMINATOR,EJECT	1	1	1
	52	63511220	STOP RING,4	1	1	1
●	53	63527020	SAFETY,SWITCH	1	1	1
	54	65011310	GEAR 20,IDLE	1	1	1
	55	72107160	BUSHING 6,LOWER REGISTRATION ROLLER	2	2	2
	56	73210450	BUSH, 6	4	4	4
	57	74808080	BEARING,686ZZNR	2	2	2
	58	77706461	PRESSING SPRING	4	4	4
	59	M1203200	OPEN BUSHING,OCB-375	1	1	1
	60	M2105720	MINIATURE CLAMP,UAMS-05-2	3	3	3
	61	M2105730	MINIATURE CLAMP,UAMS-07-0	5	5	5
	62	3A707280	FILM,LIFT	1	1	1
	63	3A708090	FILM B,CONVEYING	2	2	2

- Parts with "●" are component parts or sub-assemblies of the assembly appearing immediately above them.
- Parts with "●" indicates the Service parts.

INDEX

3A7

SP	Part. No.	Description	Quantity			Fig. No.
			120V	230V	240V	
	29806810	BUSHING,6 REGISTRATION	2	2	2	2
	3AL05120	LABEL,DF ORIGINAL CAUTION	1	1	1	2
	3AL06090	CUSHION,ORIGINAL GUIDE	2	2	2	1
●	3AL27060	SWITCH,FEED	1	1	1	3
●	3A702010	BASE,ADF	1	1	1	1
	3A702020	FRONT FRAME	1	1	1	3
	3A702030	REAR FRAME	1	1	1	3
	3A702040	MOUNT BASE,CONVEYING	1	1	1	3
	3A702050	STAY,BASE	1	1	1	1
	3A702060	FRONT RETAINER,BASE	1	1	1	1
	3A702070	REAR RETAINER,BASE	1	1	1	1
	3A702080	FRONT WORK PLATE,BASE	1	1	1	1
	3A702090	REAR WORK PLATE,BASE	1	1	1	1
	3A702100	FRONT SHAFT,RETAINER BASE	1	1	1	1
	3A702110	REAR SHAFT,RETAINER BASE	2	2	2	1
	3A702120	SPRING,PAPER FEED	2	2	2	1
	3A702130	REINFORCEMENT,ADF	1	1	1	3
	3A702140	MOUNT,PCB DRIVER	1	1	1	1
●	3A702150	ACTUATOR,ORIGINAL DETECTION	1	1	1	1
	3A702180	CUSHION,ADF	2	2	2	3
	3A702190	MOUNT,ORIGINAL DETECTION	1	1	1	1
	3A702200	RETAINING PIN,PAPER FEED	1	1	1	1
	3A702210	ADJUSTING PLATE,PAPER FEED	1	1	1	3
	3A703010	LEFT HINGE	1	1	1	1
	3A703020	RIGHT STAY,HINGE	1	1	1	1
	3A703030	RETAINER,HINGE	1	1	1	1
	3A703040	FULCRUM PIN,HINGE	1	1	1	1
●	3A704010	LOWER FRONT COVER	1	1	1	1
●	3A704020	LOWER REAR COVER	1	1	1	1
●	3A704030	LOWER COVER,PAPER FEED	1	1	1	3
	3A704040	FRONT MOUNT,COVER	2	2	2	1
	3A705020	LABEL,ORIGINAL SIZE(METRIC)		1	1	1
	3A705030	LABEL,ORIGINAL SIZE(INCH)	1			1
	3A705040	LABEL,ORIGINAL CURSOR(METRIC)		1	1	1
	3A705050	LABEL,ORIGINAL CURSOR(INCH)	1			1
●	3A706010	TABLE,ORIGINAL	1	1	1	1
●	3A706020	FRONT CURSOR,ORIGINAL TABLE	1	1	1	1
●	3A706030	REAR CURSOR,ORIGINAL TABLE	1	1	1	1
●	3A706040	COVER,ORIGINAL TABLE	1	1	1	1
	3A706050	RACK,ORIGINAL TABLE	2	2	2	1

SP	Part. No.	Description	Quantity			Fig. No.
			120V	230V	240V	
	3A706060	ACTUATOR,ORIGINAL TABLE	1	1	1	1
●	3A707010	COVER,PAPER FEED	1	1	1	2
●	3A707020	PULLEY,PAPER FEED	2	2	2	2,3
●	3A707030	PULLEY,LEADING FEED	1	1	1	2
	3A707040	GUIDE,PAPER FEED PULLEY	1	1	1	2
	3A707050	SHAFT,PAPER FEED	1	1	1	2
	3A707060	SHAFT,LEADING FEED	1	1	1	2
	3A707070	SHAFT,SEPARATION	1	1	1	3
	3A707080	MOUNT,SEPARATION PULLEY	1	1	1	3
	3A707090	HOLDER,SEPARATION PULLEY	2	2	2	3
	3A707100	SPRING,SEPARATION PULLEY	2	2	2	3
	3A707110	GEAR 30,PAPER FEED	1	1	1	2
	3A707120	PULLEY,LEADING FEED	1	1	1	2
	3A707130	BELT,LEADING FEED	1	1	1	2
●	3A707140	ACTUATOR,SIZE DETECTION	5	5	5	2
	3A707150	MOUNT,ACTUATOR	1	1	1	2
	3A707160	RETAINING PIN,PAPER FEED COVER	1	1	1	2
	3A707170	GUIDE,PAPER FEED	1	1	1	3
	3A707181	GUIDE,LIFT	1	1	1	3
	3A707190	SHAFT,LIFT	1	1	1	3
	3A707200	SPRING,LIFT	1	1	1	3
	3A707210	LEVER,LIFT	1	1	1	3
	3A707220	HANDLE,RELEASE	1	1	1	2
	3A707230	SHAFT,RELEASE	1	1	1	2
	3A707240	HOOK,RELEASE	2	2	2	2
	3A707250	STOPPER,PAPER FEED	1	1	1	2
	3A707260	FRONT SUPPORT PLATE,PAPER FEED	1	1	1	2
	3A707270	REAR SUPPORT PLATE,PAPER FEED	1	1	1	2
	3A707280	FILM,LIFT	1	1	1	3
	3A707290	PAD,LIFT	1	1	1	3
●	3A708010	UPPER ROLLER,REGISTRATION	1	1	1	3
	3A708020	LOWER ROLLER,REGISTRATION	1	1	1	3
	3A708030	GUIDE,READING	1	1	1	3
	3A708040	SPRING,READING	2	2	2	3
	3A708050	GUIDE,CONVEYING	1	1	1	3
●	3A708060	MAT,ORIGINAL HOLDER	1	1	1	1
	3A708070	FILM,CONVEYING	2	2	2	3
●	3A708080	SHEET,READING	1	1	1	3
	3A708090	FILM B,CONVEYING	2	2	2	3
●	3A710010	UPPER ROLLER,EJECT	1	1	1	3

• Parts with "●" indicates the Service parts.

SP	Part. No.	Description	Quantity			Fig. No.	SP	Part. No.	Description	Quantity			Fig. No.
			120V	230V	240V					120V	230V	240V	
	3A710020	LOWER ROLLER,EJECT	1	1	1	3		74808080	BEARING,686ZZNR	2	2	2	3
	3A710030	UPPER GUIDE,EJECT	1	1	1	3		77706461	PRESSING SPRING	4	4	4	3
	3A710040	LOWER GUIDE,EJECT	1	1	1	3		78620710	CLAW STOPPER	2	2	2	2
	3A710050	FILM,EJECT	1	1	1	3		M1203200	OPEN BUSHING,OCB-375	2	2	2	1,3
	3A722010	MOUNT,MOTOR	1	1	1	3		M2105040	NYLON CLAMP 6N,NK-6N	1	1	1	1
	3A722020	GEAR Z45/B16,IDLE	1	1	1	3		M2105720	MINIATURE CLAMP,UAMS-05-2	4	4	4	1,3
	3A722030	PULLEY 19,REGISTRATION	1	1	1	3		M2105730	MINIATURE CLAMP,UAMS-07-0	5	5	5	3
	3A722040	PULLEY 24,CONVEYING	2	2	2	3		M2108000	SPACER,KGLS-3S	3	3	3	1
	3A722050	BELT 92,CONVEYING	1	1	1	3		M2108080	SPACER,KGPS-3S	1	1	1	1
	3A722060	BELT 190,CONVEYING	1	1	1	3		M2109050	LOCKING WIRE SADDLE,LWS-2Y	3	3	3	1
	3A722070	TENSION PLATE,EJECT	1	1	1	3							
	3A722080	TENSION PLATE,CONVEYING	1	1	1	3							
	3A722090	PULLEY,DRIVE	2	2	2	3							
	3A722100	GEAR 42/29	1	1	1	3							
	3A722110	CAM,LIFT	1	1	1	3							
	3A722120	GEAR 38,LIFT	1	1	1	3							
	3A722130	SQUARE SPRING,CAM	1	1	1	3							
●	3A727010	MOTOR,PAPER FEED	2	2	2	3							
	3A727020	WIRE,PAPER FEED	1	1	1	3							
	3A727030	WIRE,INTERFACE	1	1	1	1							
	3A727040	JUNCTION WIRING,SIZE DETECTION	1	1	1	1							
●	3A728010	DRIVER PCB	1	1	1	1							
●	3A728020	ADF SIZE DETECTION PCB	1	1	1	3							
	3BC07130	ONE-WAY CLUTCH 6	1	1	1	2							
	34806150	STOPPER 5	15	15	15	1,2,3							
	34907070	PIN,CLAW CASSETTE	2	2	2	2							
	34920190	GROUND PLATE,FIXING UNIT	1	1	1	1							
●	35327400	SWITCH,FEED	2	2	2	1							
	36211500	GEAR,LEADING FEED JOINT	1	1	1	2							
	36706900	TORQUE LIMITER,PAPER FEED	1	1	1	3							
	49027300	BUSHING 6	4	4	4	3							
	63212210	STATIC ELIMINATOR,EJECT	1	1	1	3							
	63511220	STOP RING,4	6	6	6	1,2,3							
●	63527020	SAFETY,SWITCH	1	1	1	3							
	65011310	GEAR 20,IDLE	1	1	1	3							
	65907210	GEAR 20,CASSETTE	1	1	1	1							
	68721640	PULLEY 20,DUPLX CONVEYING	1	1	1	2							
	72107160	BUSHING 6,LOWER REGISTRATION ROLLE	2	2	2	3							
	72118141	SPRING,CLEANING BLADE	2	2	2	2							
	73210450	BUSH, 6	4	4	4	3							

• Parts with "●" indicates the Service parts.